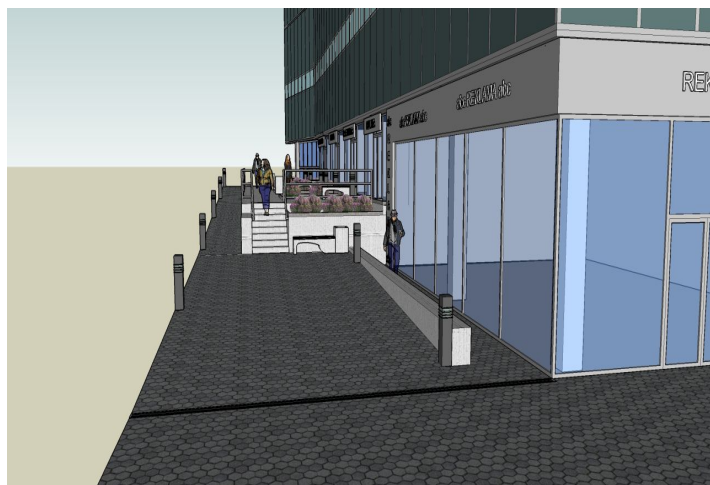
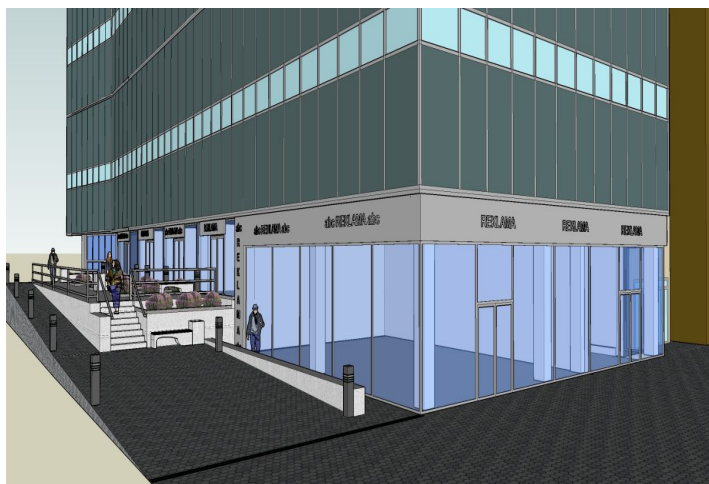




# Retail space

Prague 10, Vršovice, Kubánské náměstí

Rented





## Retail space

Prague 10, Vršovice, Kubánské náměstí

**Rented**

<b>Service price</b>	174 CZK monthly per m <sup>2</sup>
<b>Available area</b>	118 m <sup>2</sup>
<b>Parking</b>	EUR 90 / ps / month
<b>PENB</b>	D
<b>Reference number</b>	21878

Retail premises on the ground floor of a seven-story administrative building, with excellent parking opportunity, located on Prague 10.

### Location:

Good accessibility by car and public transportation – in close vicinity of tram stations, within walking distance (ca. 10 minutes) of the Strašnická metro station (line A), good connection to the southern arterial road (Jižní spojka), D1 and D11 motorways.

### Features and Services:

- Access card entry system
- Copy centrum
- Canteen
- Air-conditioned offices
- Openable windows
- Parking for visitors
- Carwash

Rental and service charges listed without VAT. Lessee pays no commission.

