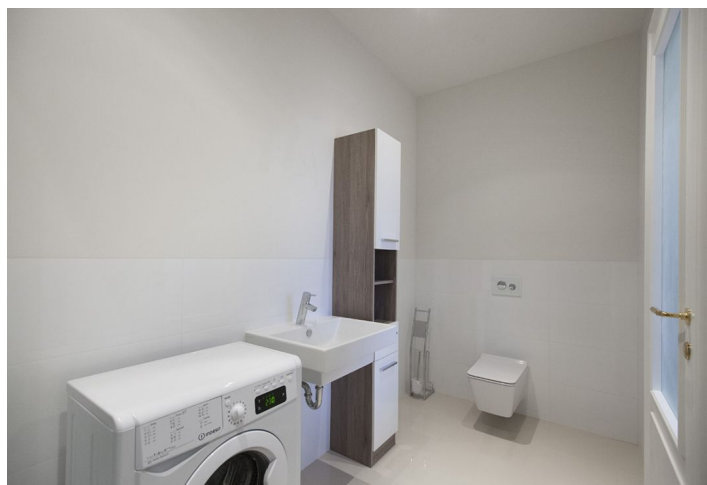




Apartment One-bedroom (2+kk)

Rented

55 m², Praha 1, Staré Město, Dlouhá





Apartment One-bedroom (2+kk)

Rented

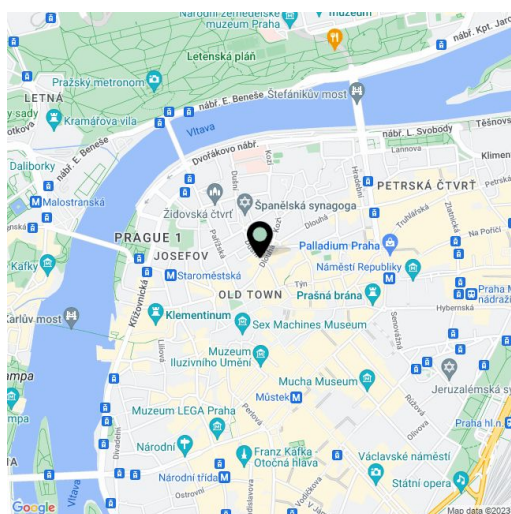
55 m², Praha 1, Staré Město, Dlouhá

Total area	55 m ²
Parking	-
Cellar	-
PENB	G
Reference number	21900
Available from	Immediately

Comfortable furnished 1-bedroom atelier on the third floor with lift in a unique completely renovated building, Palác Dlouhá, in the heart of the Old Town. This Art Deco style building from the 1920s is conveniently located in the Prague city center, just minutes from the Old Town Square, with metro and trams close by, and excellent shopping and entertainment opportunities.

The interior features living room with a fully fitted open kitchen and dining area, one bedroom with an en-suite bathroom (walk-in shower, sink, toilet), a guest toilet, and an open entry hall.

Solid wood parquet floors, security entry door, large windows, recessed lighting, light dimmers, washing machine, dishwasher, microwave oven, video entry phone, alarm. Common building charges and deposit for utilities approx CZK 4000/month.



* Area of the unit according to the Civil Code. The area consists of the sum total area of the entire unit bounded by perimeter walls.