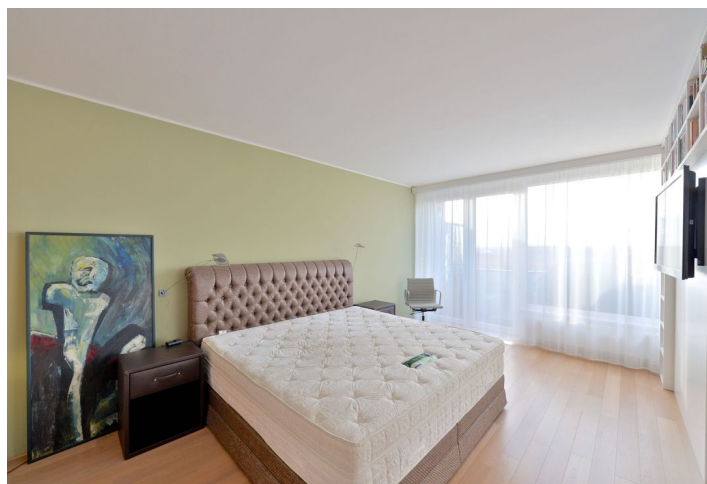




Apartment Three-bedroom (4+kk)

Sold

139 m², Prague 8, Troja, K Haltýři





Apartment Three-bedroom (4+kk)

Sold139 m², Prague 8, Troja, K Haltýři

| | |
|------------------|-------------------------|
| Total area | 187 m ² |
| Floor area* | 139 m ² |
| Terrace | 48 m ² |
| Parking | 2 garage parking spaces |
| Garage | Yes |
| Cellar | Yes |
| Service price | 6 000 CZK monthly |
| PENB | C |
| Reference number | 21934 |

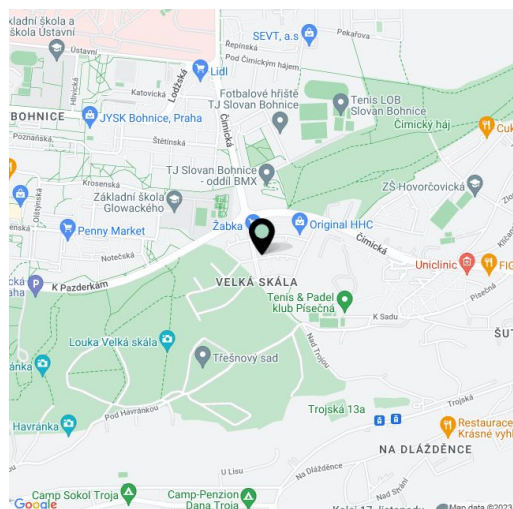
This air-conditioned 3-bedroom flat boasting a terrace and two balconies with panoramic views of Prague is located on the third floor of an apartment building with an elevator. The house is situated on the southern slope of a quiet area in Troja – Velká Skála, Prague 8, within walking distance to the Šutka waterpark, Čimický háj grove and Velká Skála protected natural monument, followed by Draháň-Troja natural park.

The layout offers a living room with kitchen and dining room, 3 bedrooms (master bedroom with large walk-in closet), 2 bathrooms, separate toilet, storage / utility room and entrance hall. The apartment has a terrace with stunning views of the city.

Amenities include air-conditioning, **solid bleached oak floors**, custom-made kitchen with a stone worktop, **wine fridge** and **Miele** appliances (glass-ceramic hob, steam and classic oven, extractor hood and two refrigerators), interior **doors with internal hinges**, plastic windows, exterior screen blinds and awnings. The purchase price includes **2 garage parking spaces** and **cellar**.

The location offers close proximity to the Prague Zoo and Botanical Garden. There are a lot of sporting grounds, including tennis halls and courts, a squash center, bi-cross track, several football clubs and a softball center. Full amenities including schools and kindergartens within walking distance. Two bus stops from the metro station Kobylisy (5 minutes).

Interior 138.18 m², terraces and balconies 48.5 m², cellar about 4 m², 2 garage parking spaces (one large).



* Area of the unit according to the Civil Code. The area consists of the sum total area of the entire unit bounded by perimeter walls.



Apartment Three-bedroom (4+kk)

Sold

139 m², Prague 8, Troja, K Haltýři

