

**Office space****Rented**

Prague 7, Holešovice, Jankovcova

Service price	135 CZK monthly per m ²
Available area	215 m ²
Cellar	-
Parking	EUR 130 / ps / month
PENB	B
Reference number	22094

Office space for lease on the 7th floor in an administrative complex situated in Prague 7. The property consists of two towers A1 (19 floors) and lower building B (4 floors). BREEAM Very Good Certification.

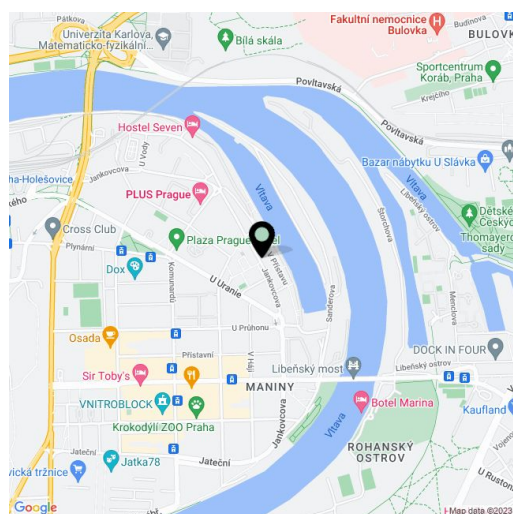
Location:

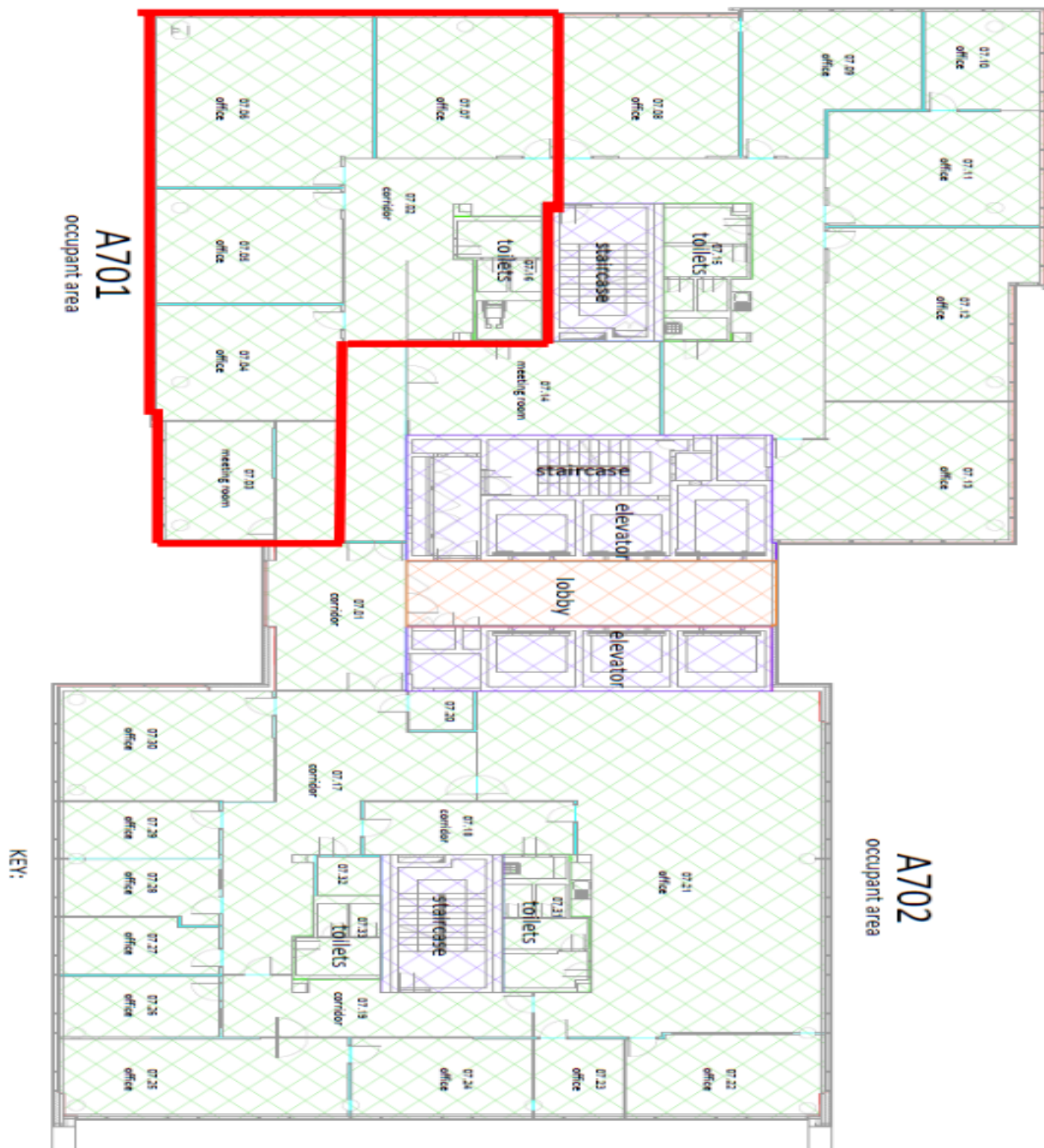
Administrative building is situated right behind Vltava river, in a rapidly growing development area of Holešovice. Good accessibility by public transportation and car – close to the metro stations Vltavská (line C) and Palmovka (line B), tram stops (Dělnická or Maniny) are few minutes walk. Number of primary transportation routes, including access to the D1 and D8 (Berlin) highways.

Features and Services:

- Central reception
- 24-hour security service
- Air-conditioning
- CCTV
- Modern elevators
- Carpets and tiles on the floors
- Storage space
- Underground garage parking
- Restaurant and café

Rental and service charges listed without VAT. Lessee pays no commission.





KEY: