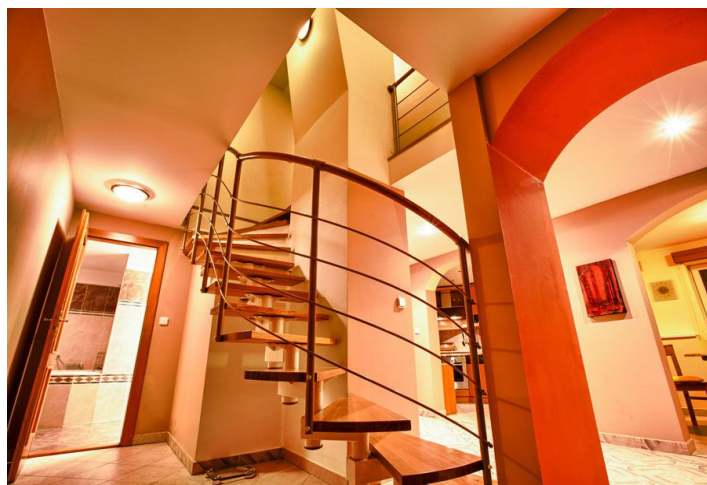




Apartment Two-bedroom (3+1)

144 m², Prague 1, Nové Město, Petřská

Sold





Apartment Two-bedroom (3+1)

Sold144 m², Prague 1, Nové Město, Petřská

Total area	155 m ²
Floor area*	144 m ²
Terrace	11 m ²
Parking	-
Cellar	-
Service price	5 000 CZK monthly
PENB	G
Reference number	22166

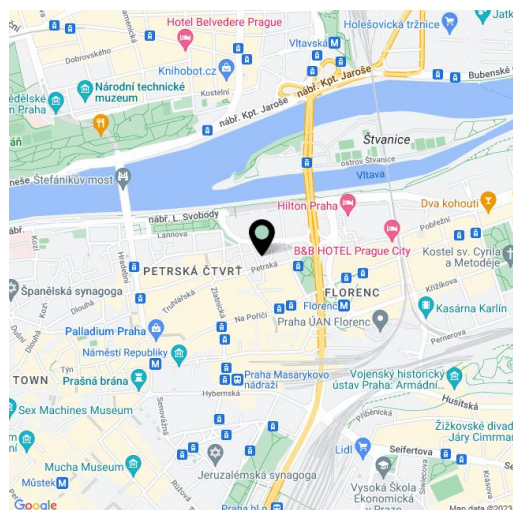
Enviably located in the heart of old Prague, just moments from upmarket shops, boutiques and plenty of cafés and restaurants, this generous 2-bedroom split-level attic flat with private terrace is set on the 4th floor of a well-kept building with immaculate common areas.

The lower floor offers a lounge, eat-in kitchen (both with terrace access), bedroom, bathroom, separate toilet, storage and entry hall. The upper floor consists of a bedroom with walk-in closet, bathroom, laundry room, storage rooms and gallery.

Air conditioning, jacuzzi bath, laminate floating floors, plastic windows, gas boiler. Final approval took place in 2003. The building has a lift.

Quiet neighbourhood in a **sought after central location**, just steps from the Florenc bus station and metro. All amenities within walking distance, with excellent transport links throughout Prague.

Interior 143.7 m², terrace 11 m².



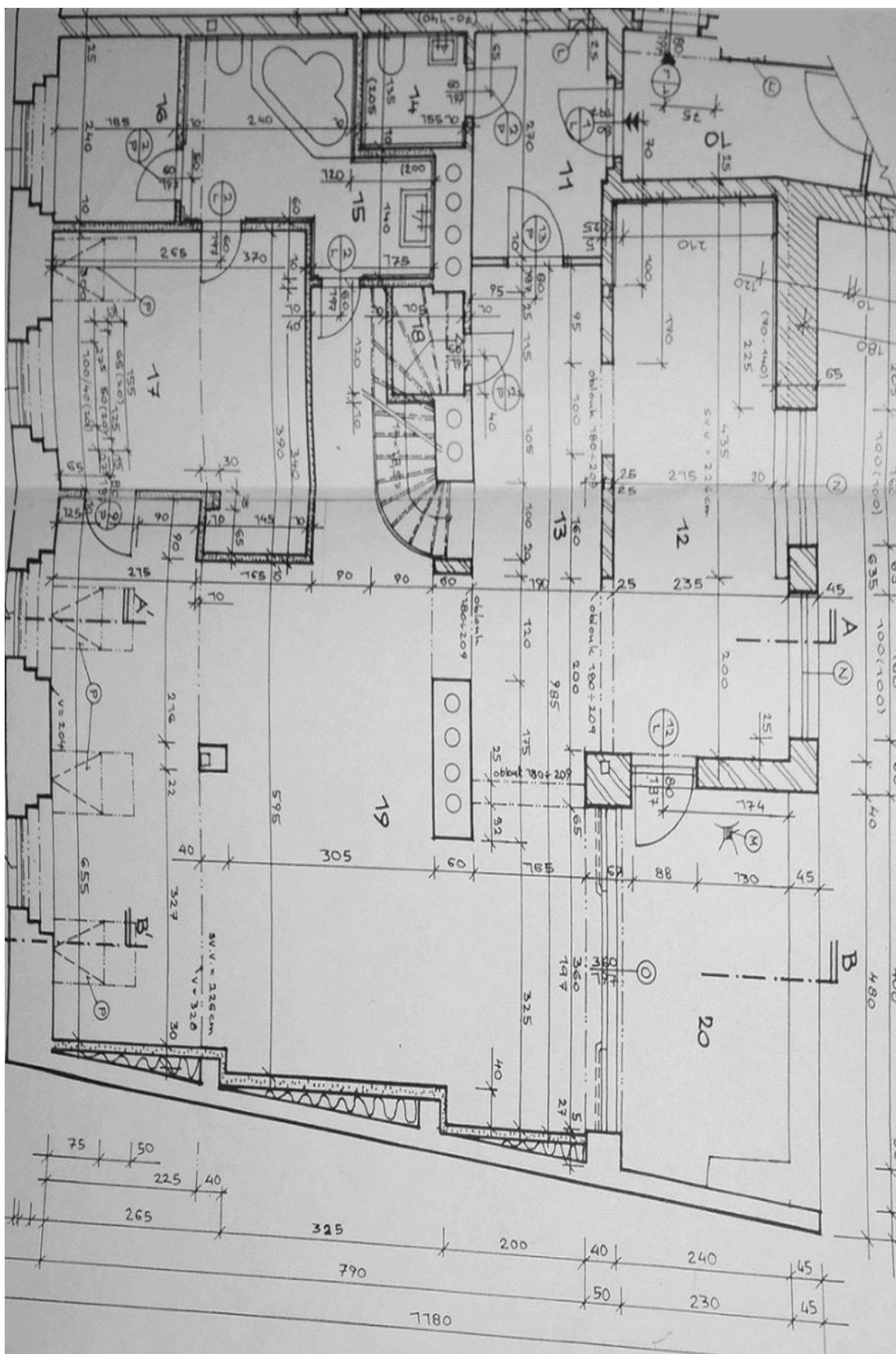
* Area of the unit according to the Civil Code. The area consists of the sum total area of the entire unit bounded by perimeter walls.



Apartment Two-bedroom (3+1)

Sold

144 m², Prague 1, Nové Město, Petrská





Apartment Two-bedroom (3+1)

144 m², Prague 1, Nové Město, Petrská

Sold

