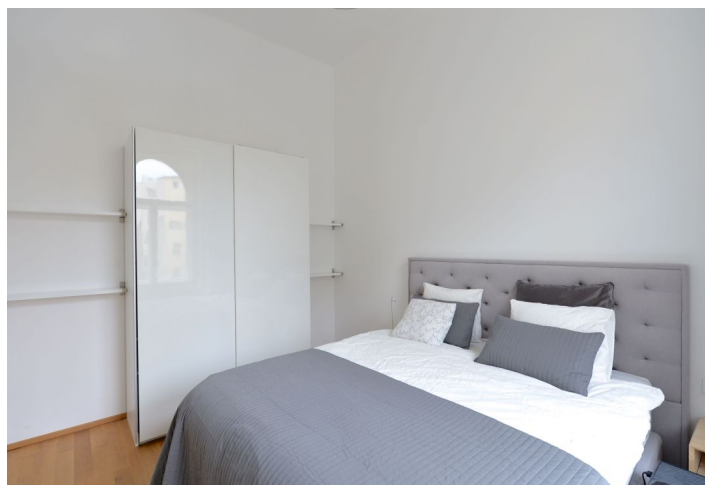
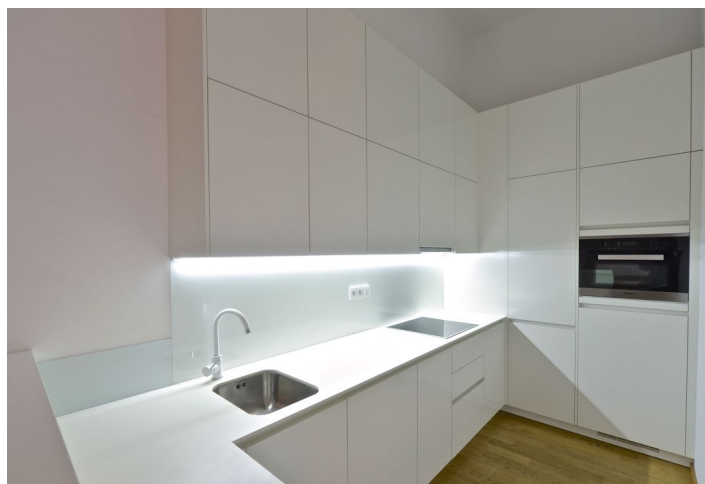




Apartment One-bedroom (2+kk)

Rented

62 m², Prague 1, Nové Město, Na Poříčí





Apartment One-bedroom (2+kk)

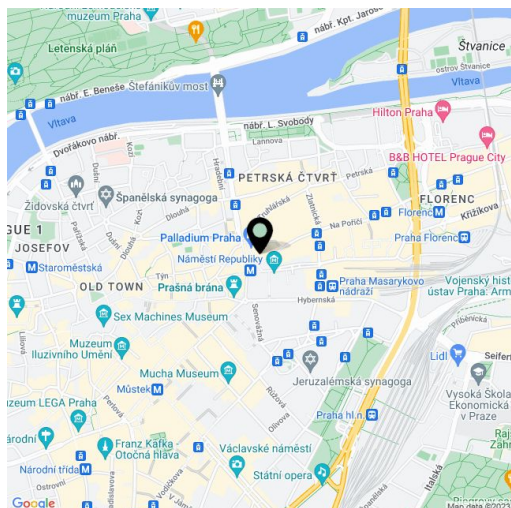
Rented62 m², Prague 1, Nové Město, Na Poříčí

Total area	63 m ²
Floor area*	62 m ²
Balcony	1 m ²
Parking	-
Cellar	Yes
PENB	G
Reference number	22206
Available from	Immediately

Benefiting from a central location and preserved original details, this is a high standard fully renovated furnished 1-bedroom flat with a balcony. Situated on the second floor of a meticulously refurbished grand building with a lift, security and marble entrance. Well located just minutes from Náměstí Republiky and Florenc metro with multiple transportation links, around the corner from the Hilton Prague Old Town Hotel, and moments from the Palladium and Kotva shopping malls.

With beautiful high ceilings and large windows, the interior features a fully fitted open kitchen, living room with dining area and balcony access, one bedroom, bathroom (tub with a shower screen, sink, toilet), and entry hall with built-in wardrobes.

Wooden floors, security entry door, stucco ornaments, gas boiler, washer, Miele kitchen appliances, fold out sofa bed, cellar. Deposit for common building charges, water, Internet and satellite CZK 2,500/month. Electricity and gas will be transferred to the tenant's name. Available from October 18, 2022.



* Area of the unit according to the Civil Code. The area consists of the sum total area of the entire unit bounded by perimeter walls.