



House Seven-bedroom (8+1)

Rented

370 m², Prague 6, Dejvice, V Šáreckém údolí





House Seven-bedroom (8+1)

Rented

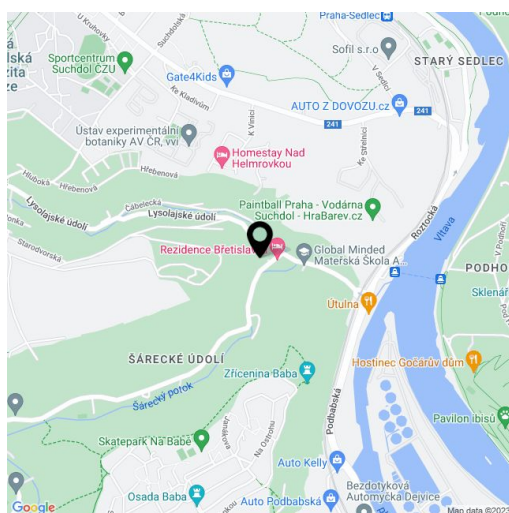
370 m², Prague 6, Dejvice, V Šáreckém údolí

Plot	1 064 m²
Parking	Double garage.
Garage	Yes
Cellar	-
PENB	B
Reference number	22245
Available from	Immediately

Benefiting from an outdoor swimming pool and a wonderful location on the edge of a forest, this is a high standard unfurnished 6-bedroom 4-bathroom free standing house set in a green slope. Situated in the charming Šárecké Valley surrounded by green hills and peaceful countryside. Good connection to the city center, the airport and international schools in Prague 6, convenient to Dejvická metro station with full amenities in the area. Steps to Global Concept Montessori School, five min. to the ISP School.

Second floor (accessed from the street level): spacious living room with dining area and terrace access, fully fitted kitchen with pantry, guest toilet, hall with terrace access, entry hall with built-in wardrobes. Mezzanine floor: garage access, walk-in closet. First floor: four bedrooms, three bathrooms, walk-in closet. Ground floor: two bedrooms, study, family room with a kitchenette, bathroom, two walk-in closets, laundry / utility room, terrace and garden access.

Heated pool 4x8 m, green views, air-conditioning, solid wood parquet floors, heated tiles, French windows, blinds, washer, dryer, satellite TV connection, alarm, camera system. Double garage. Utilities around CZK 15,000 per month. Unfurnished. Available from July 2017.

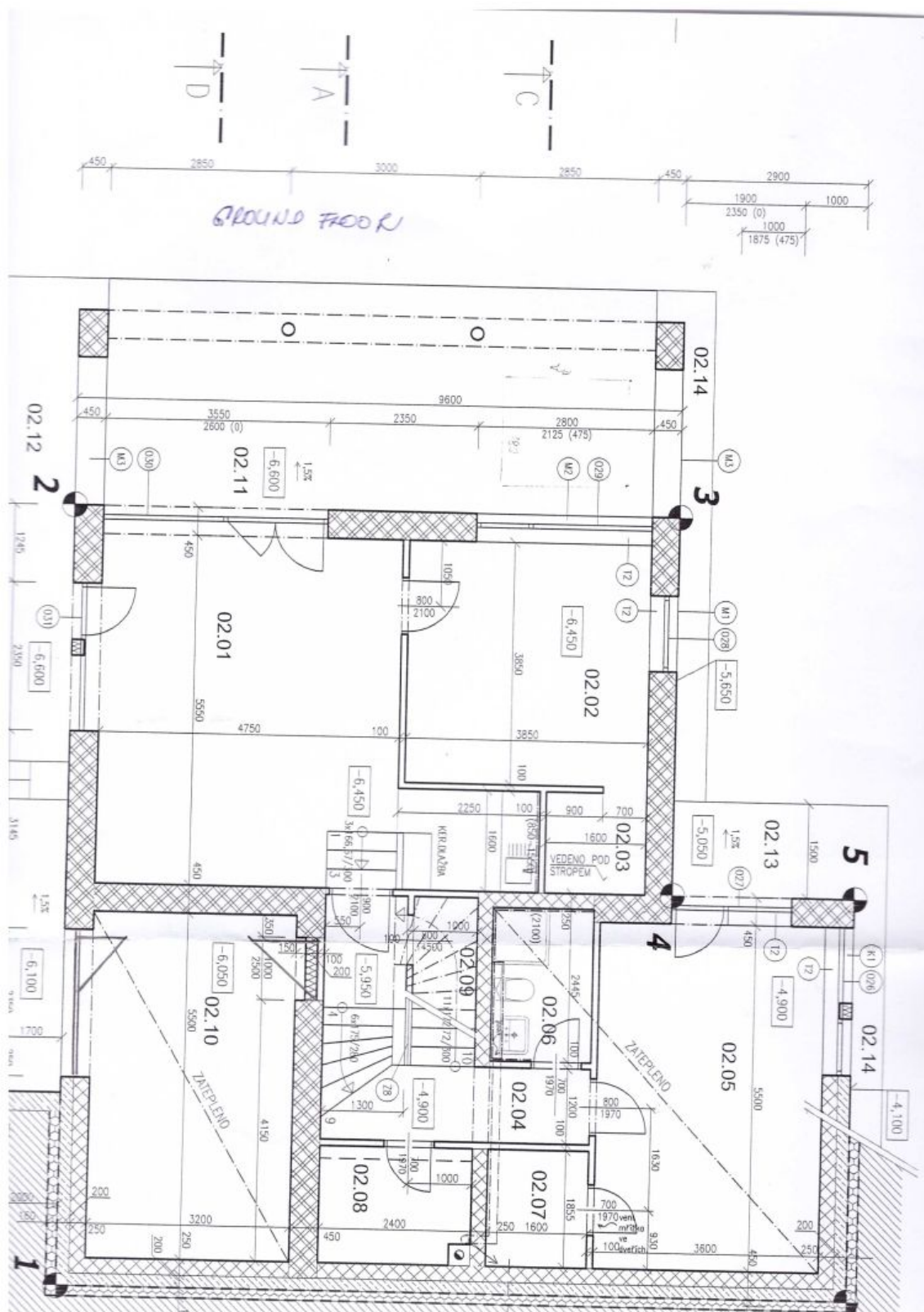




House Seven-bedroom (8+1)

Rented

370 m², Prague 6, Dejvice, V Šáreckém údolí

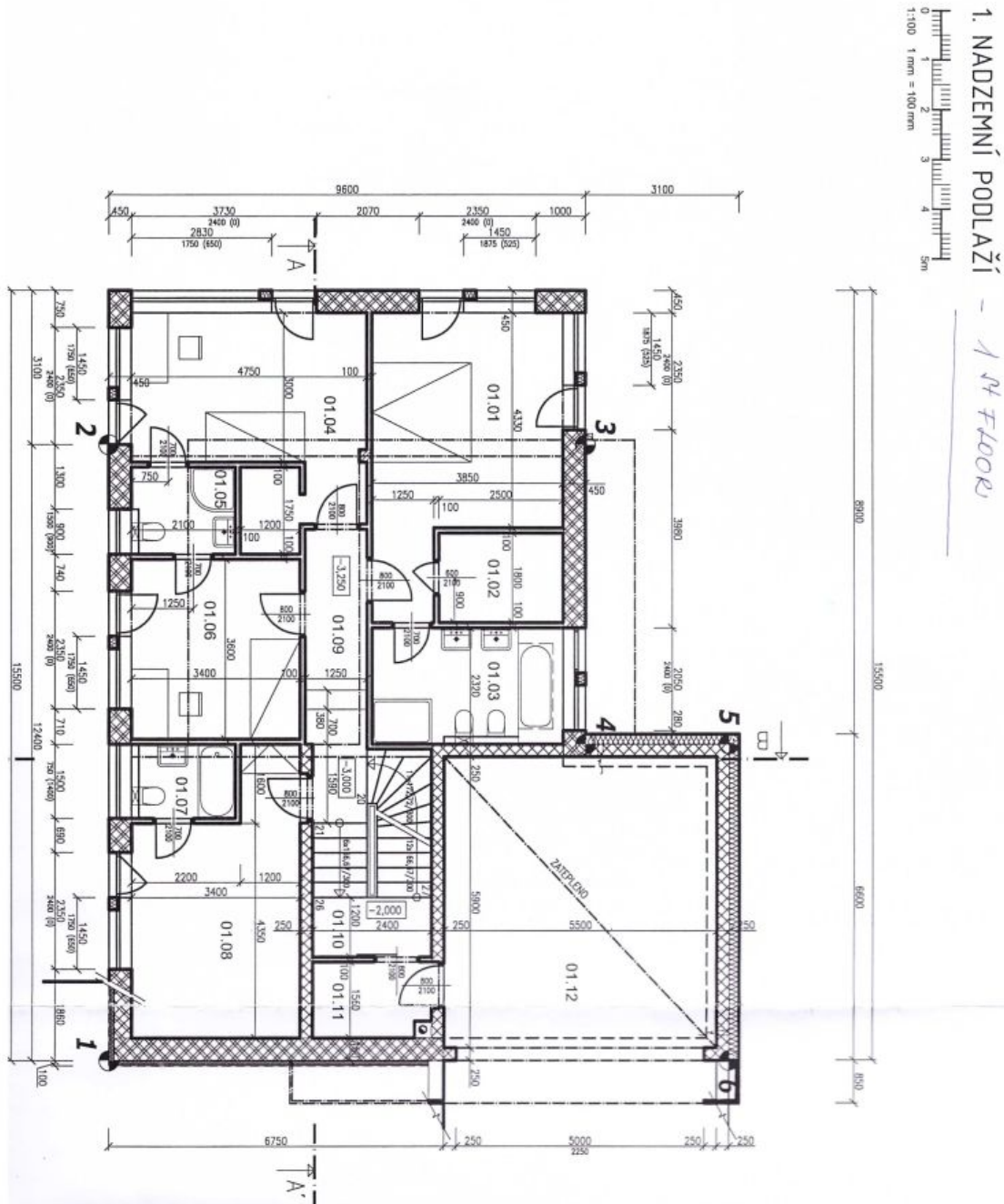




House Seven-bedroom (8+1)

370 m², Prague 6, Dejvice, V Šáreckém údolí

Rented

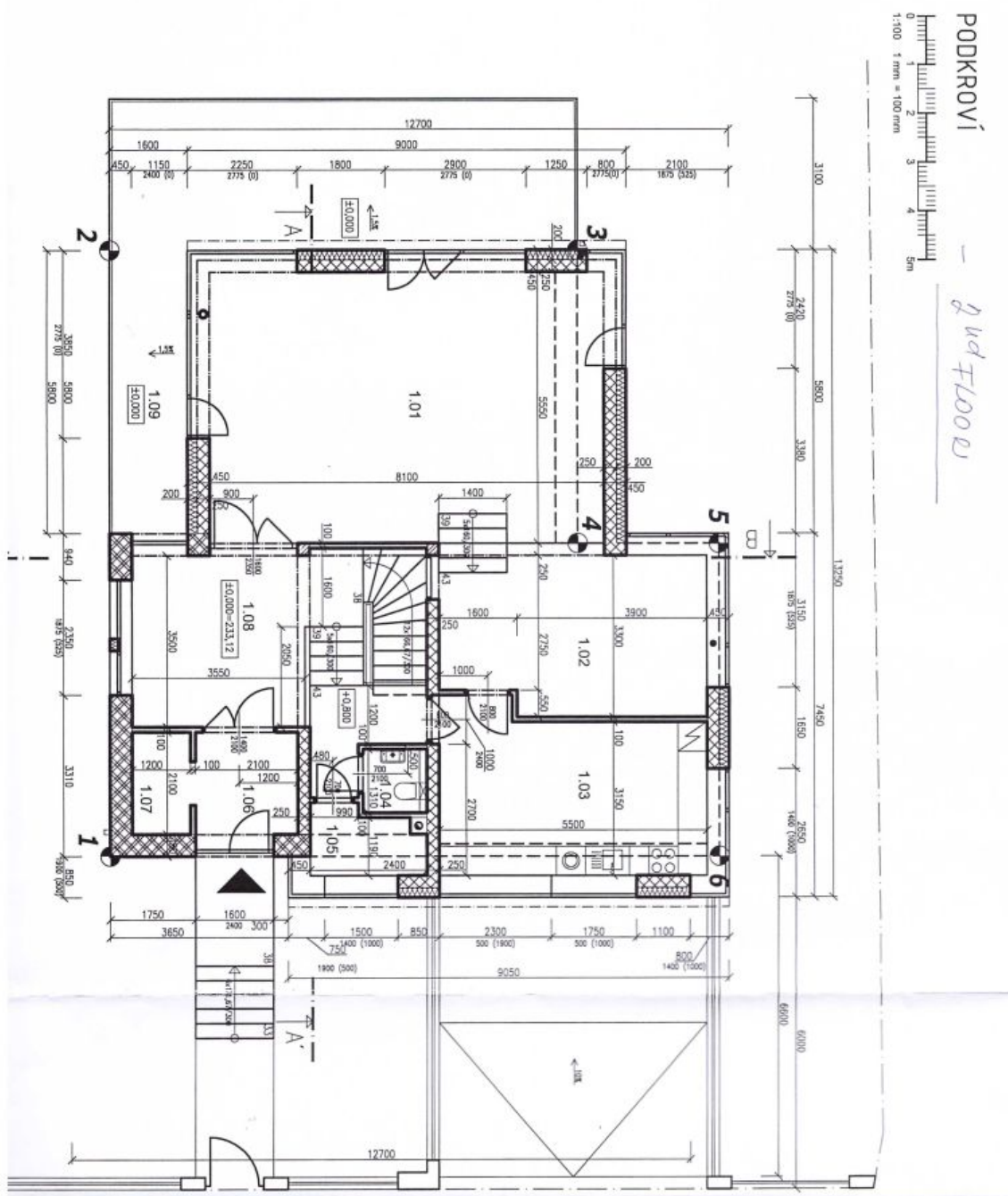




House Seven-bedroom (8+1)

370 m², Prague 6, Dejvice, V Šáreckém údolí

Rented





House Seven-bedroom (8+1)

Rented

370 m², Prague 6, Dejvice, V Šáreckém údolí

Ground floor

		m2
02.01	family room	31,3
02.02	study	14,9
02.03	walk in closet	2,6
02.04	stairs	8,6
02.05	bedroom	20,1
02.06	bathroom	3,7
02.07	walk in closet	3,1
02.08	laundry room	4,4
02.09	storage	2,7
02.10	bedroom	17,6
02.11	covered terrace	31,4

1st floor

01.01	bedroom	19,5
01.02	walk in closet	4,5
01.03	bathroom	8,8
01.04	bedroom	18,4
01.05	bathroom	3,6
01.06	bedroom	12,5
01.07	bathroom	2,9
01.08	bedroom	16,9
01.09	hallway	5,5
01.10	stairs	9,7
01.11	storage	3,8
01.12	garage	32,5

2nd floor

1.01	living room	49,6
1.02	dinning space	18,4
1.03	kitchen	18,3
1.04	pantry	1,52
1.05	wc	3,1
1.06	entrance	4,9
1.07	closet	2,6
1.08	hall	23,9
1.09	terrace	39,3