



## Industrial park

48 000 m<sup>2</sup>, Louny, Podbořany

Ask for price





## Industrial park

48 000 m<sup>2</sup>, Louny, Podbořany

**Ask for price**

Total area	48 000 m <sup>2</sup>
Ceiling height	8 m
Floor loading capacity	2 t/m <sup>2</sup>
Column grid structure	—
Structure	—
PENB	G
Reference number	22263

Industrial park offers industrial, warehouse and office space for lease in Podbořany. The whole area of the park is 160,000 square meters. Hall 1 was built in 2000, while Hall 2 was built in 2005. The covered area of both industrial buildings is 48 000 sq. m. Minimum area for lease is 24 000 sq. m. The entire area is fenced in and secured by a camera system; ample car parking.

### Location:

The Podbořany industrial zone is located in the southwest part of Podbořany, in close vicinity of the D7 highway (Prague - Karlovy Vary). The Podbořany industrial zone is located 25 km from the Triangle Zatec industrial zone.

### Features and Services:

- Grid in both halls 18 x 12 m
- Clear height 8 m
- Floor loading in 1st hall 2 t/m<sup>2</sup>
- Floor loading in 2nd hall 5 t/m<sup>2</sup>
- Building depth 108 m
- Sprinkler system in both halls
- Parking in the area

Rental and service charges listed without VAT. Lessee pays no commission.

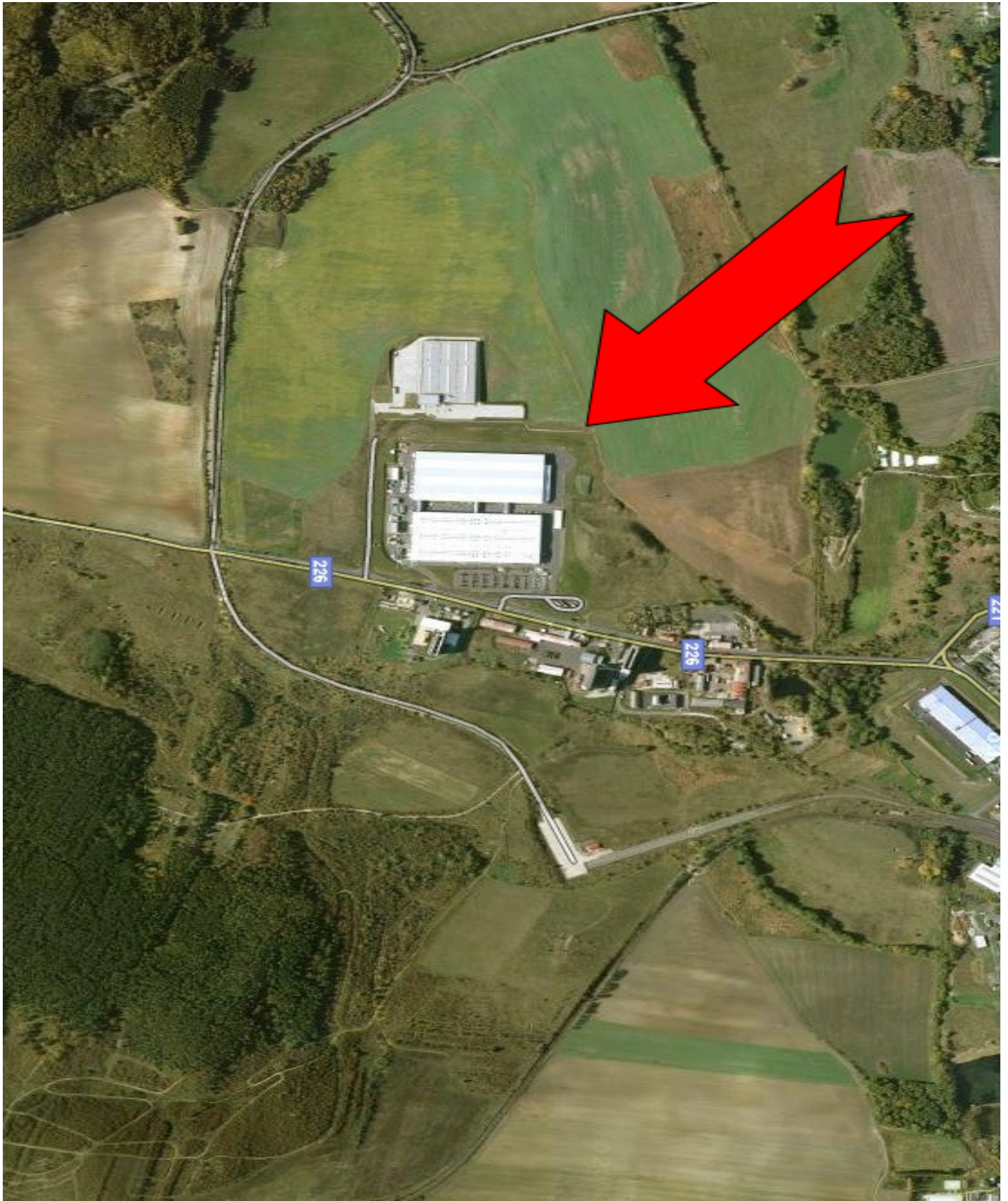




## Industrial park

48 000 m<sup>2</sup>, Louny, Podbořany

Ask for price





# Industrial park

48 000 m<sup>2</sup>, Louny, Podbořany

Ask for price

