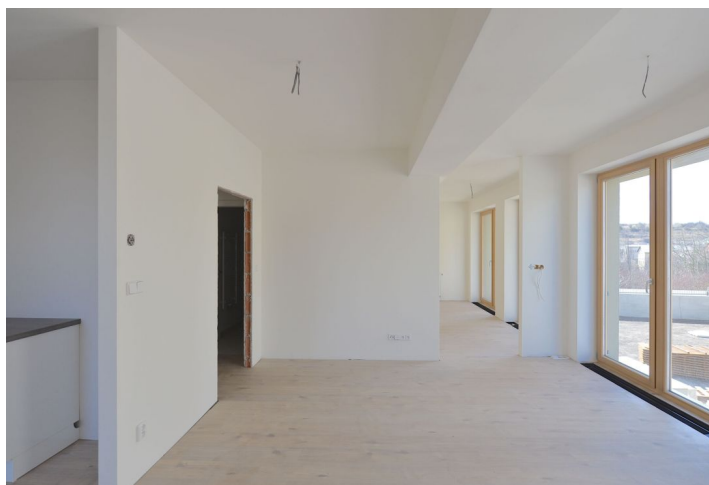




## Apartment One-bedroom (2+kk)

Rented

50 m<sup>2</sup>, Praha 5, Jinonice, Na Vysoké I





## Apartment One-bedroom (2+kk)

Rented

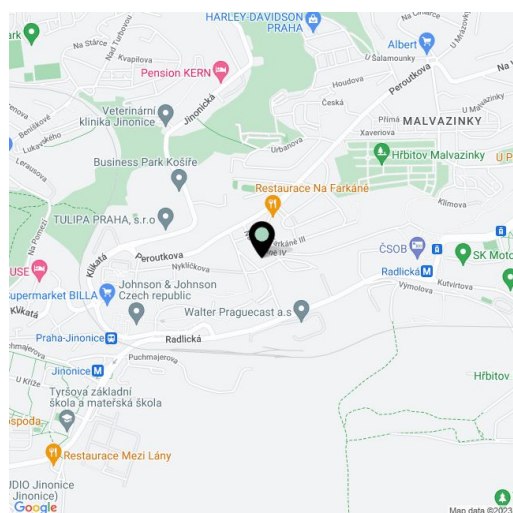
50 m<sup>2</sup>, Praha 5, Jinonice, Na Vysoké I

Total area	50 m <sup>2</sup>
Parking	Garage parking.
Garage	Yes
Cellar	-
PENB	G
Reference number	22279
Available from	Immediately

Benefiting from nice views of the surrounding green residential area, this is a brand new 1-bedroom flat. Situated on the first floor of a new residential development with underground parking, on-site gym and security. Located in a quiet green neighborhood next to Waltrovka project, with quick access to the French and German international schools, and the Anděl business district. Very good access to the city center, closest metro stations Radlická and Jinonice.

The interior features living room with a fully fitted open kitchen and dining area, an open bedroom, shower bathroom with sink and toilet, and entry hall with built-in wardrobes.

Laminated floors, tiles, heated floor in the bathroom, security entry door, large format and French windows, outdoor blinds, dishwasher, microwave oven, video entry phone, chip entry to the building. Can be furnished with basic furniture at a higher rent. Garage parking available at CZK 1100/space/month. Common building charges and utilities CZK 3240/month. Cleaning service can be provided at an additional fee.



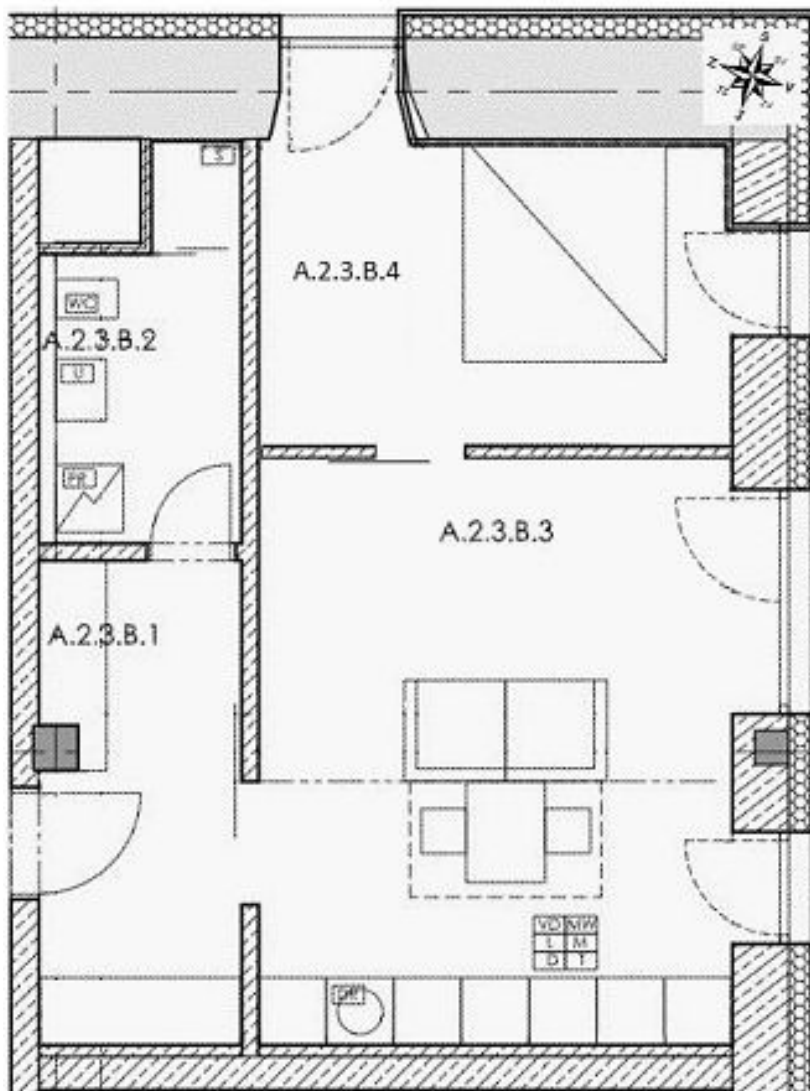
\* Area of the unit according to the Civil Code. The area consists of the sum total area of the entire unit bounded by perimeter walls.



# Apartment One-bedroom (2+kk)

50 m<sup>2</sup>, Praha 5, Jinonice, Na Vysoké I

Rented



Chodba A.2.3.B.1	7,69	Koupelna A.2.3.B.2	6,2	Obývák + Kuchyně A.2.3.B.3	22,56	Ložnice A.2.3.B.4	13,29	Celkem	49,74
---------------------	------	-----------------------	-----	-------------------------------	-------	----------------------	-------	--------	-------

**Byt A.2.3.B**