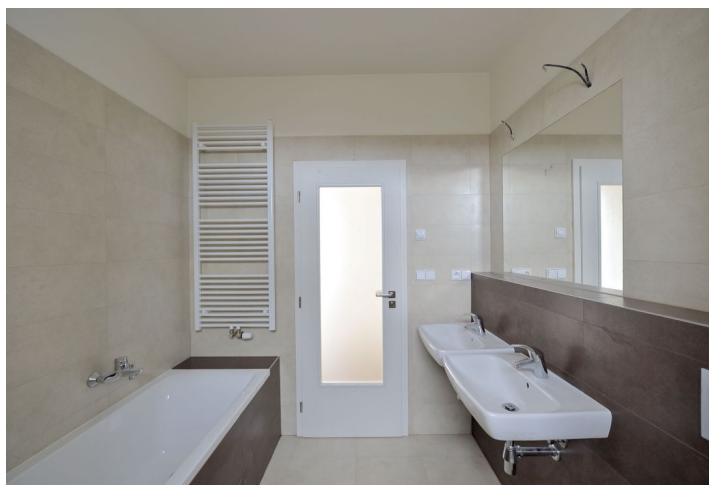




## Apartment Two-bedroom (3+kk)

Rented

107 m<sup>2</sup>, Prague 5, Jinonice, Na Vysoké I





## Apartment Two-bedroom (3+kk)

**Rented**107 m<sup>2</sup>, Prague 5, Jinonice, Na Vysoké I

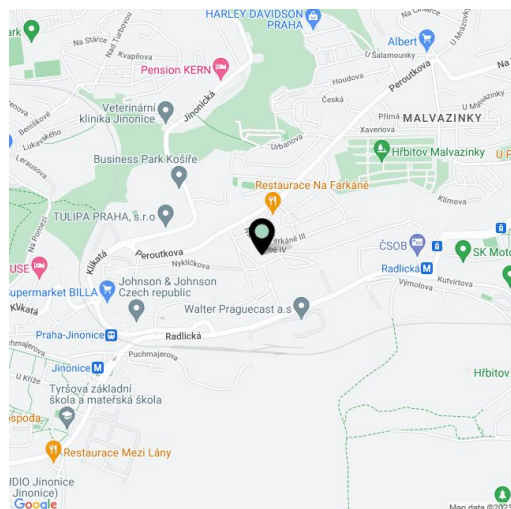
Total area	157 m <sup>2</sup>
Floor area*	107 m <sup>2</sup>
Terrace	50 m <sup>2</sup>
Parking	Garage parking.
Garage	Yes
Cellar	Yes
PENB	G
Reference number	22296
Available from	Immediately

Benefiting from two terraces (total of 25 m<sup>2</sup>) and beautiful views of Prague and the surrounding green residential area, this is a brand new 2-bedroom flat. Situated on the fourth top floor of a new residential development with underground parking, on-site gym and security. Located in a quiet green neighborhood next to Waltrovka project, with quick access to the French and German international schools, and the Anděl business district. Very good access to the city center, closest metro stations Radlická and Jinonice.

The interior features a spacious living room with a fully fitted open kitchen and dining area, two separate bedrooms, bathroom, guest toilet, pantry, and an open entry hall with lots of built-in wardrobes. The terrace is accessible from the living room and one bedroom.

Wooden floors, tiles, heated floor in the bathroom, security entry door, large format and French windows, outdoor blinds, dishwasher, microwave oven, video entry phone, chip entry to the building, cellar. Can be furnished with basic furniture at a higher rent. Garage parking available at CZK 1100/space/month. Common building charges and utilities CZK 4720/month. Cleaning service can be provided at an additional fee. Available from middle of June 2017.

Flat 107 m<sup>2</sup>, terraces 50 m<sup>2</sup>.



\* Area of the unit according to the Civil Code. The area consists of the sum total area of the entire unit bounded by perimeter walls.



# Apartment Two-bedroom (3+kk)

Rented

107 m<sup>2</sup>, Prague 5, Jinonice, Na Vysoké I

## Byt B.5.1

Předstř	WC	Komora	Koupelna	Ložnice1	Ložnice2	Kuchyně + Obývací	Spíž	Celkem	Terasa
B.5.1.1	B.5.1.2	B.5.1.3	B.5.1.4 <sup>9</sup>	B.5.1.5	B.5.1.6	B.5.1.7,8	B.5.1.10	106,67	27,47
13	1,54	9,74	6,77	12,22	13,47	47,6	2,33		

