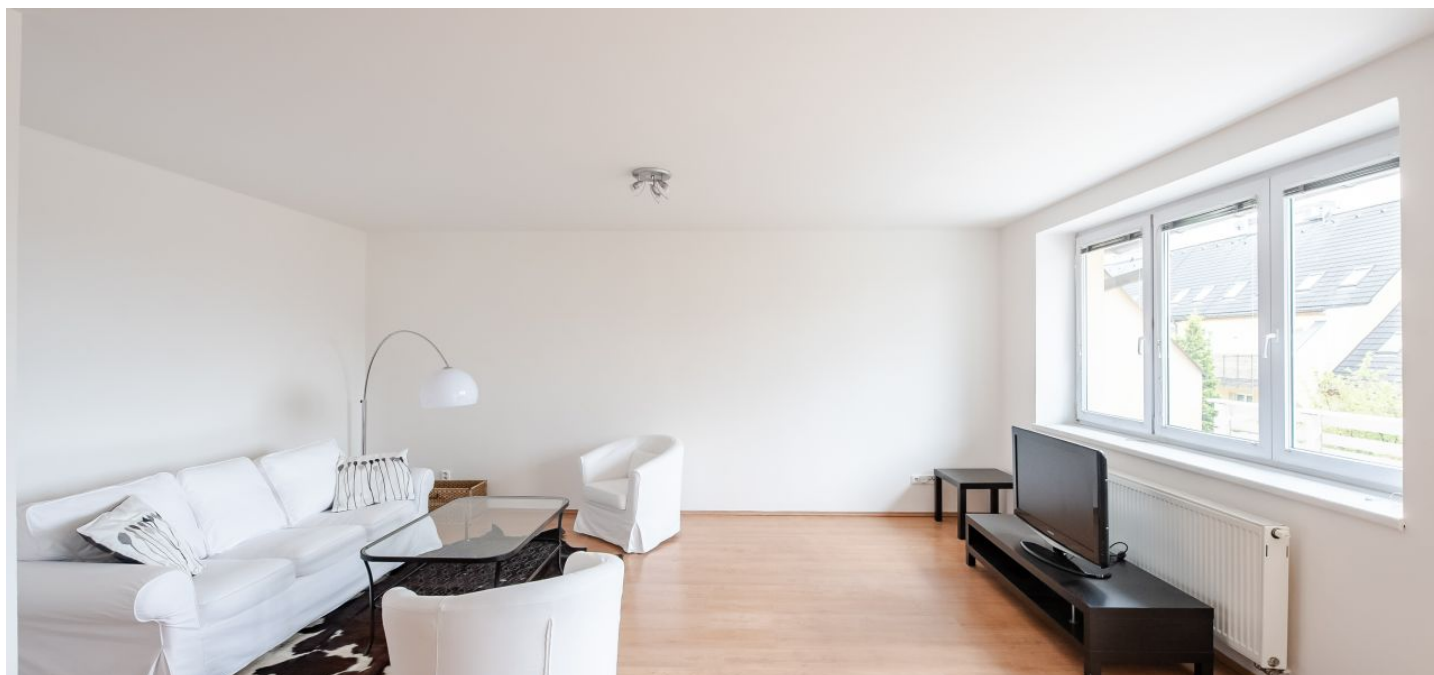




House Four-bedroom (5+1)

240 m², Prague 6, Řepy, Na Fialce II

Rented





House Four-bedroom (5+1)

Rented

240 m², Prague 6, Řepy, Na Fialce II

| | |
|------------------|--|
| Plot | 284 m² |
| Foot print | 141 m² |
| Garden | 143 m² |
| Parking | Garage and parking in front of the garage. |
| Garage | Yes |
| Cellar | - |
| PENB | C |
| Reference number | 22309 |
| Available from | Immediately |

Furnished 3-bedroom 3-bathroom townhouse with a back garden, in a quiet green residential area of Řepy, Prague 6. Located near a park like forest, just moments from the Japanese School, and a short drive from the German School and Metropole Zličín shopping and entertainment center. Basic amenities within walking distance, 25 minutes by tram to the city center.

Laid out on several levels, the house has an entry hall with built-in wardrobes and garage access, a fully fitted eat-in kitchen with pantry and access to the terrace and garden, living room with a terrace, 3 separate bedrooms - one with terrace and one with a walk-in closet, and two family bathrooms (each with both bath tub and walk-in shower). There is also an attic gallery, laundry room with a walk-in shower, two guest toilets, and fitness room (or playroom).

Laminated and tile floors, wooden stairs, blinds, gas boiler, security glass windows, washer, dryer, dishwasher, microwave oven, TV, alarm, automatic garage door. Garage plus parking in front of the garage. Utilities around CZK 8,000 per month.

