



Retail space

Prague 1, Staré Město

Ask for price

Service price	1 000 CZK monthly
Available area	108 m ²
Parking	-
PENB	G
Reference number	22323

Commercial space for lease in the basement of a historic building / apartment house situated in the city center. Space with vaulted ceilings suitable for services as a cosmetic or massage saloon or barber shop. Located in an attractive tourist area of Prague 1 – Old Town.

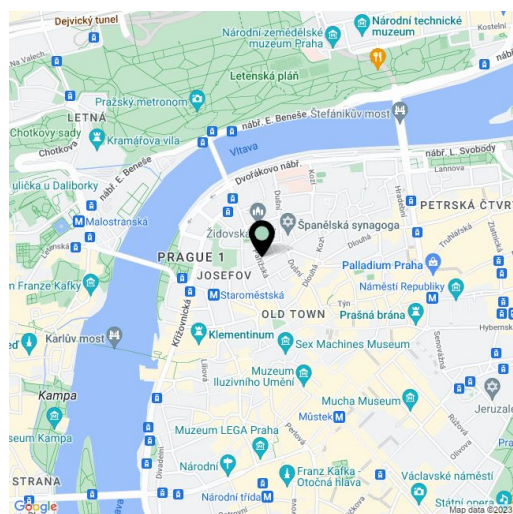
Location:

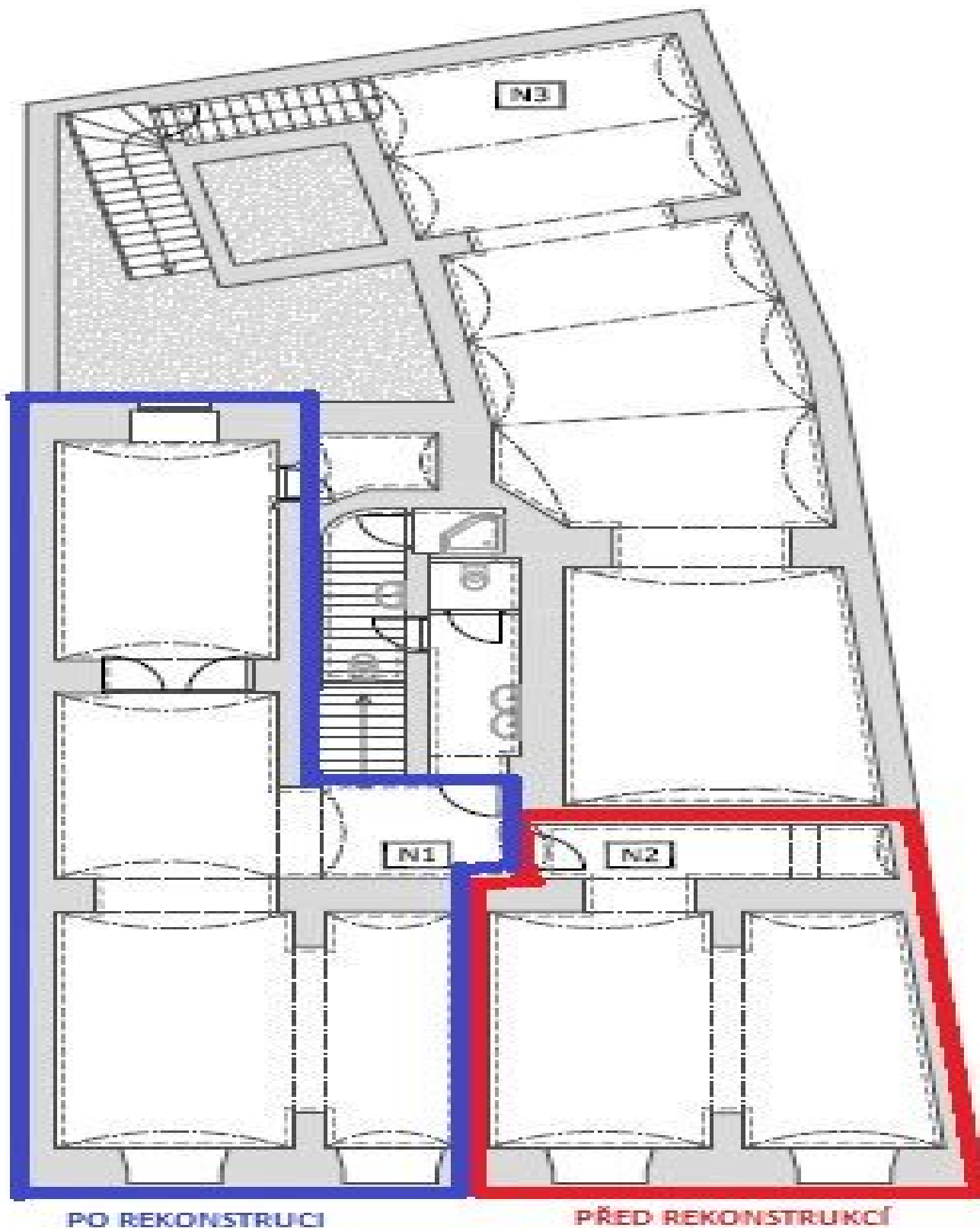
Ideal location near Prague's most exclusive street, Pařížská, just around the corner and within walking distance of Old Town Square. Excellent transport accessibility – in close vicinity to tram stops and the Staroměstská metro station (line A).

Features and Services:

The basement space consists of three rooms. There is a bar, kitchen, and toilets. There is, as well, a cozy courtyard that leads to an entrance to an established dental practice. Premises are accessible just through the common area of the apartment building (no window and no direct entrance from the street).

Rental price **CZK 30 000/month/space N1** and **CZK 10 000/month/space N2**. Rents and service charges are listed without VAT.





N1 - 74m²
N2 - 34m²