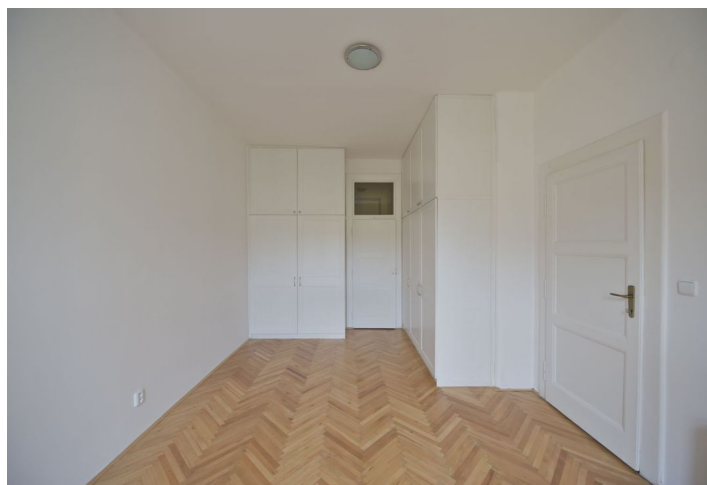




## Apartment One-bedroom (2+1)

78 m<sup>2</sup>, Prague 4, Nusle, Nuselská

Sold





## Apartment One-bedroom (2+1)

**Sold**78 m<sup>2</sup>, Prague 4, Nusle, Nuselská

Total area	78 m <sup>2</sup>
Parking	-
Cellar	Yes
Service price	2 000 CZK monthly
PENB	G
Reference number	22331

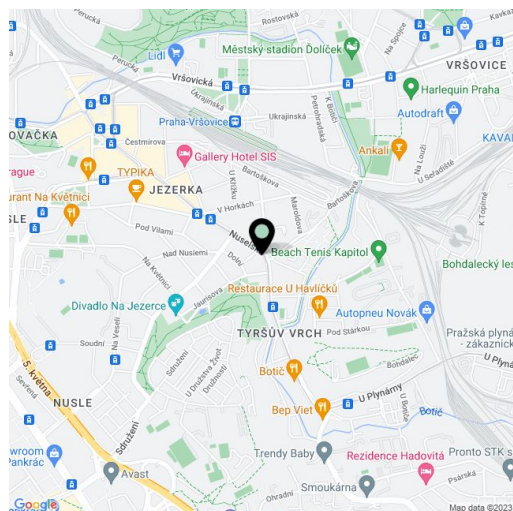
**Bright and quiet 1-bedroom 2-bathroom courtyard-facing apartment on the 5th floor of a secure building with a lift in Prague 4, close to the Jezerka park, with bus and tram connections to the metro and city center.**

The apartment has one bedroom with an en-suite bathroom (bathtub, sink and toilet) and built-in wardrobes, living room with an en-suite shower bathroom (sink and toilet), fully fitted kitchen with dining area open to the entrance hall, walk-in closet, and pantry/technical room.

Equipped with **parquet, wide plank flooring** and tiles, **large casement windows**, wooden interior doors, audio entry phone, Radik radiators, boiler room in the house. The purchase price includes a **cellar**.

Good transport accessibility and excellent amenities, including large parks and playgrounds. The Jezerka park is directly behind the house, while you can also find the Týršův vrch park with an archery training ground. Nursery / primary school situated just around the corner.

Interior 78.28 m<sup>2</sup>, cellar 3.93 m<sup>2</sup>.



\* Area of the unit according to the Civil Code. The area consists of the sum total area of the entire unit bounded by perimeter walls.