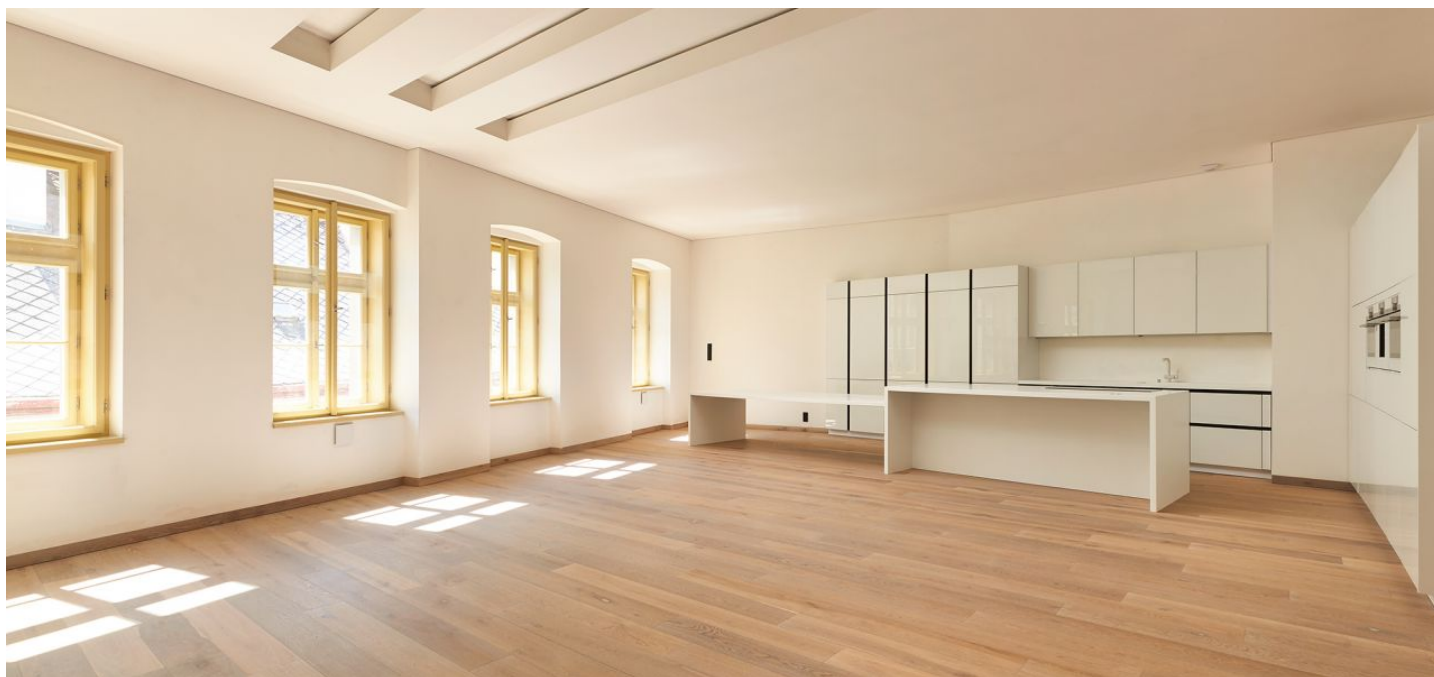




## Apartment Two-bedroom (3+kk)

Rented

197 m<sup>2</sup>, Praha 1, Nové Město, Truhlářská





## Apartment Two-bedroom (3+kk)

Rented

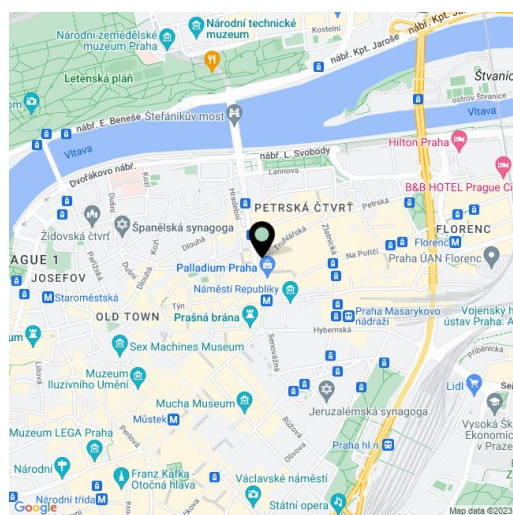
197 m<sup>2</sup>, Praha 1, Nové Město, Truhlářská

Total area	197 m <sup>2</sup>
Parking	Garage parking.
Garage	Yes
Cellar	-
PENB	G
Reference number	22387
Available from	Immediately

Top quality contemporary 2-bedroom 2-bathroom flat designed by the de.fakto architectural studio, situated on the fourth floor of a luxury residence with reception and parking. This historic building with a Classicist facade underwent complete refurbishment incl. the installation of new energy-saving technologies. Situated in the very city center just moments from the Palladium and Kotva shopping centers, within walking distance of the Old Town and Wenceslas Squares. Excellent transportation connections - a minute walk from Náměstí Republiky metro station, line B, and multiple tram links.

The interior features a spacious entry hall, a large bright living room with a fully fitted and equipped open kitchen, master bedroom with a full en-suite bathroom, second bedroom, and family bathroom with both bath tub and walk-in shower.

High standard equipment and finishes, wooden floors, high ceilings, cooling and heating in the ceilings and walls, air exchange system, security entry door, floor heating in the bathrooms, built-in wardrobes and storage, intelligent home control system, WiFi, video entry phone. The flat can be furnished at a higher rent. On-site garage parking available at CZK 6000/space/month. Common building charges and utilities CZK 10,756/month. Available from June 2016.



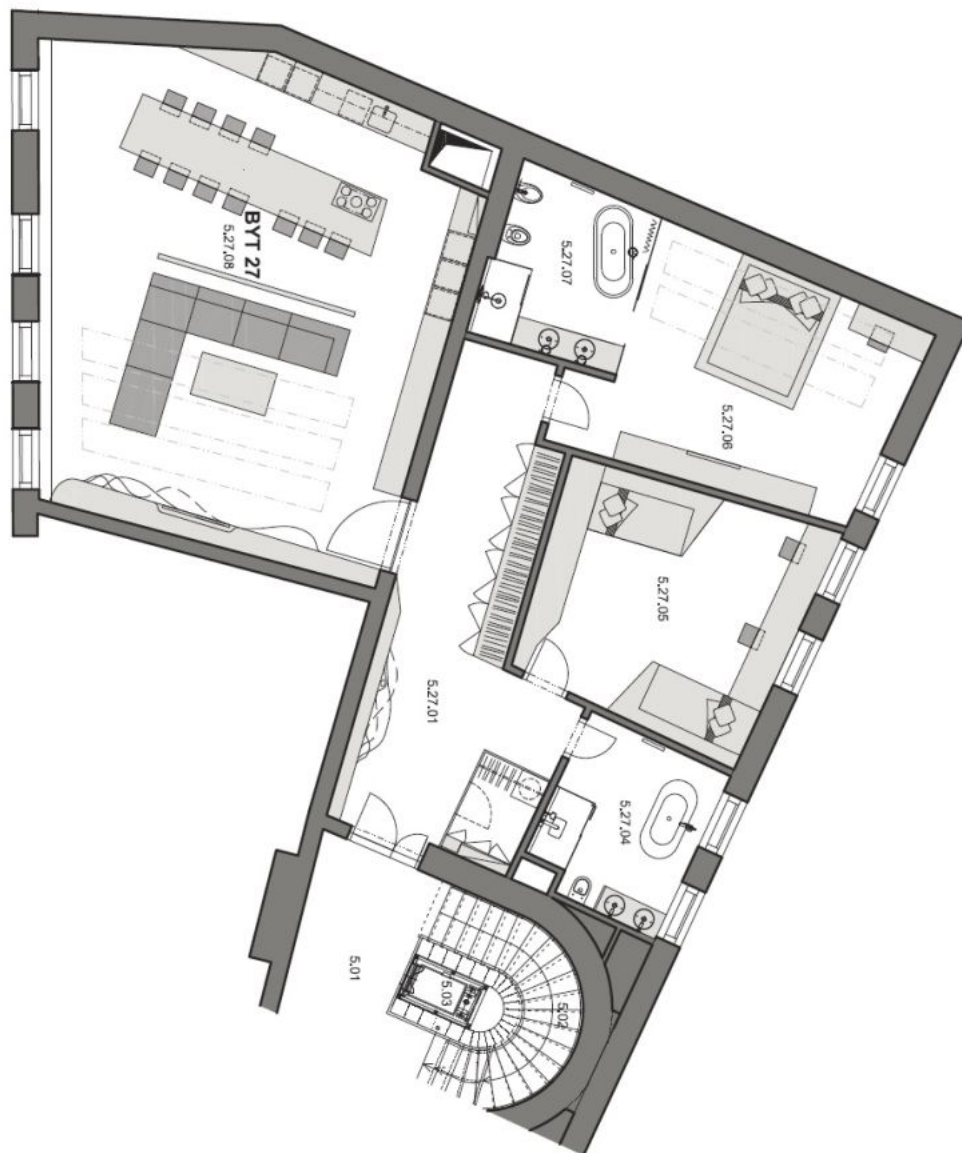
\* Area of the unit according to the Civil Code. The area consists of the sum total area of the entire unit bounded by perimeter walls.



## Apartment Two-bedroom (3+kk)

197 m<sup>2</sup>, Praha 1, Nové Město, Truhlářská

Rented







## Apartment Two-bedroom (3+kk)

197 m<sup>2</sup>, Praha 1, Nové Město, Truhlářská

Rented

