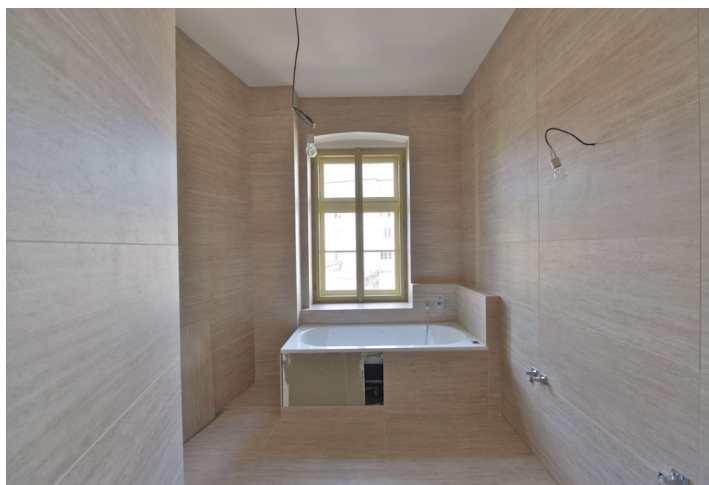




Apartment Two-bedroom (3+kk)

Rented

120 m², Prague 1, Nové Město, Truhlářská





Apartment Two-bedroom (3+kk)

Rented

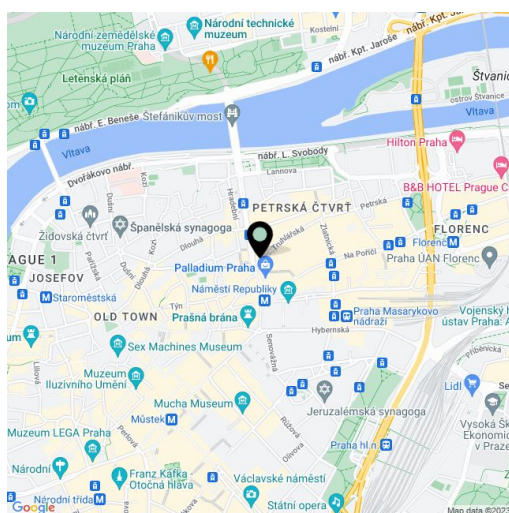
120 m², Prague 1, Nové Město, Truhlářská

Total area	120 m ²
Parking	Garage parking.
Garage	Yes
Cellar	-
PENB	G
Reference number	22392
Available from	Immediately

Top quality contemporary 2-bedroom flat designed by the de.fakto architectural studio, situated on the third floor of a luxury residence with reception and parking. This historic building with a Classicist facade underwent complete refurbishment incl. the installation of new energy-saving technologies. Situated in the very city center just moments from the Palladium and Kotva shopping centers, within walking distance of the Old Town and Wenceslas Squares. Excellent transportation connections - a minute walk from Náměstí Republiky metro station, line B, and multiple tram links.

The interior features a large living room with a fully fitted and equipped open plan kitchen, two separate bedrooms, bathroom with both bath tub and walk-in shower, two toilets, and entry hall.

High standard equipment and finishes, wooden floors, high ceilings, cooling and heating in the ceilings and walls, air exchange system, security entry door, floor heating in the bathroom, built-in wardrobes and storage, intelligent home control system, video entry phone. The flat can be furnished at a higher rent. On-site garage parking available at CZK 6000/space/month. Common building charges and utilities CZK 7535/month.



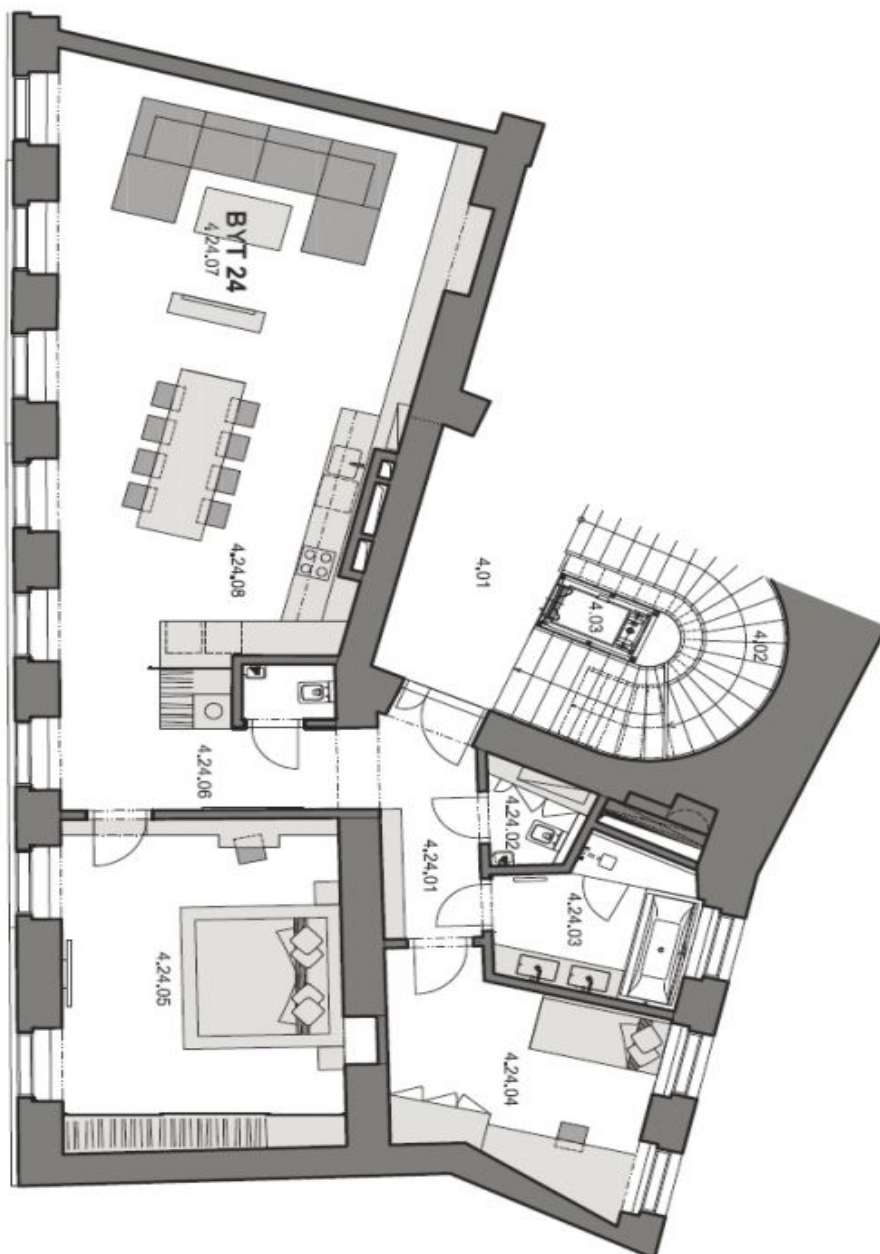
* Area of the unit according to the Civil Code. The area consists of the sum total area of the entire unit bounded by perimeter walls.



Apartment Two-bedroom (3+kk)

Rented

120 m², Prague 1, Nové Město, Truhlářská





Apartment Two-bedroom (3+kk)

120 m², Prague 1, Nové Město, Truhlářská

Rented

