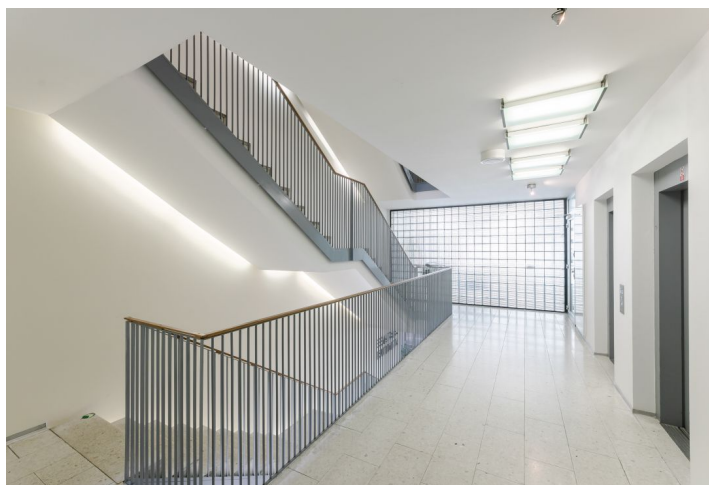
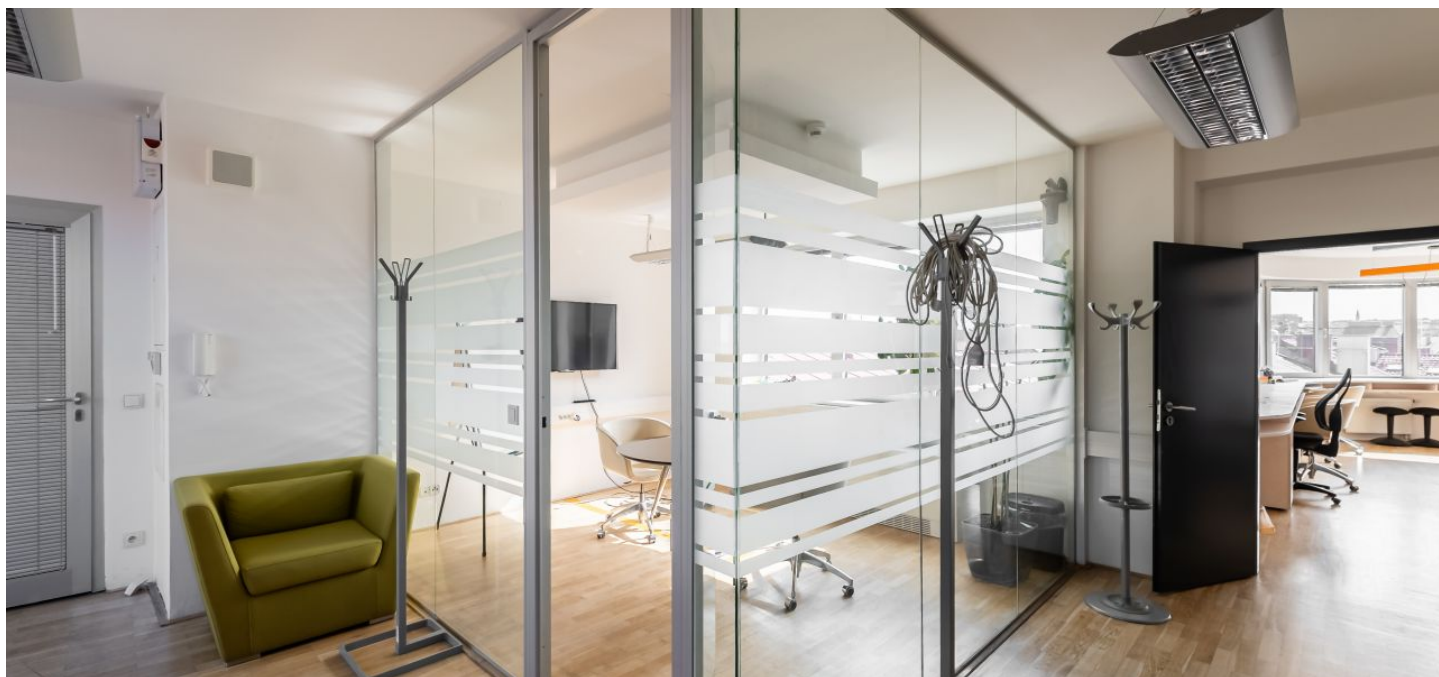




Office space

€ 16.00 / m² | CZK 403 / m²

Prague 5, Smíchov, Štefánikova



**Office space**

Prague 5, Smíchov, Štefánikova

€ 16.00 / m² | CZK 403 / m²

Service price	110 CZK monthly per m ²
Available area	215 m ²
Cellar	-
Parking	EUR 115 / ps / month
PENB	C
Reference number	22450

Office space for lease on the 3rd floor in an administrative building located on the border of Smíchov and Lesser Town. The building not only has an office floor, but also a courtyard, where there is a smaller apartment building.

Location:

Excellent accessibility by car and public transportation—within walking distance of the Anděl metro station (line B), a number of tram and bus stops, and a train station. Easy connections to the Prague Ring Road, the D5 highway to Germany, and the Prague Václav Havel International Airport.

Features and Services:

- Central reception
- 24/7 security
- Air-conditioning (fan coil units)
- Openable windows
- Suspended ceilings
- Storage
- Parking spaces

Images might not accurately reflect the current state of the premises.

Rental and service charges listed without VAT. Lessee pays no commission.

