



Apartment Two-bedroom (3+kk)

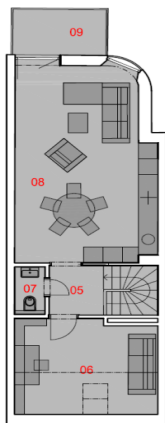
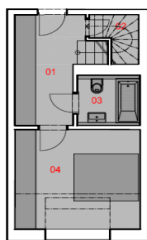
Sold

88 m², Prague 3, Žižkov, Jagellonská



7. NP / 7TH FLOOR

8. NP / 8TH FLOOR





Apartment Two-bedroom (3+kk)

Sold88 m², Prague 3, Žižkov, Jagellonská

Total area	96 m ²
Floor area*	88 m ²
Balcony	8 m ²
Parking	-
Cellar	-
PENB	G
Reference number	22464

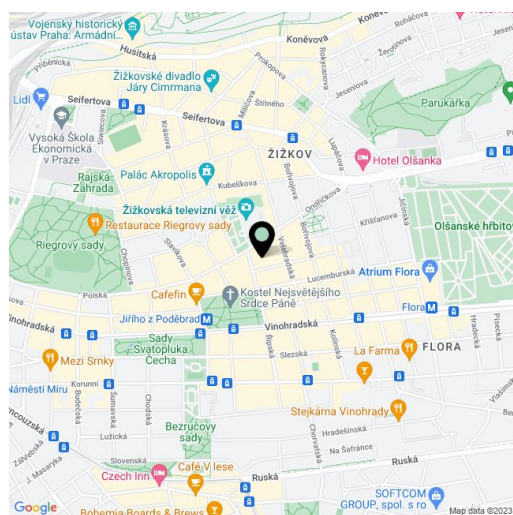
Boasting a spacious west-facing balcony, this new 2-bedroom split-level attic flat is set on the 6th and 7th floors of an apartment building undergoing a complete reconstruction. Conveniently located right on the border of Žižkov and Vinohrady, just a stone's throw away from the metro at Jiřího z Poděbrad square, and Mahlerovy sady park. Completion scheduled for Q2 2017.

The flat offers a sunny living room with kitchen, dining area and balcony, 2 bedrooms, bathroom with toilet, separate toilet, and entrance hall with space for built-in wardrobes.

The standard equipment of the apartment will include two-layer hardwood floors, large format tiles, **Schueco aluminum atelier windows** and wooden windows with triple-glazing, oversized lacquered interior doors, NEXT security entrance door, Baxi gas boiler, heated floors and Laufen, Hüppe, Hansgrohe and Riho fixtures in the bathroom, preparation for air-conditioning, reinforced concrete ceiling and wall structure, suspended plasterboard ceilings. Possibility to choose a **higher standard** at extra cost. The building has a lift.

Residential location with excellent amenities and easy access to the city center. Near the house you can find kindergartens, schools, playgrounds, parks, a selection of quality restaurants and cafes, and the Atrium Flora shopping mall with IMAX cinema.

Interior 88 m², balcony 7.5 m².



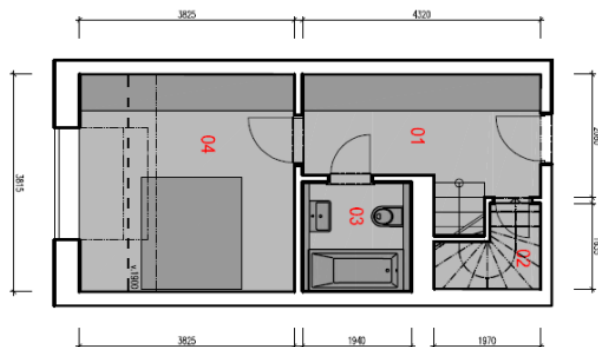
* Area of the unit according to the Civil Code. The area consists of the sum total area of the entire unit bounded by perimeter walls.



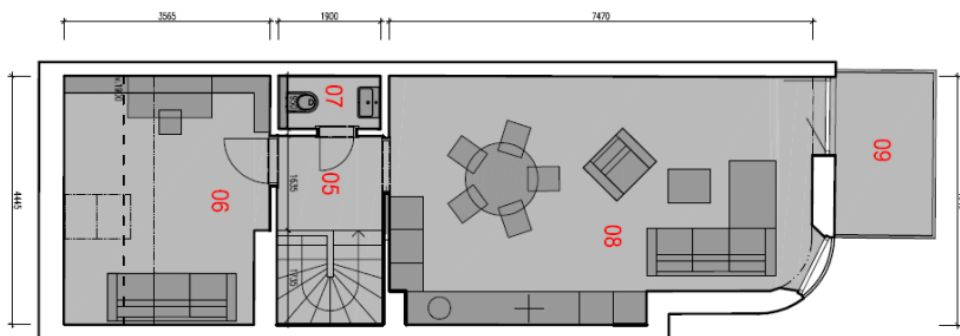
Apartment Two-bedroom (3+kk)

88 m², Prague 3, Žižkov, Jagellonská

Sold



7. NP / 7TH FLOOR



8. NP / 8TH FLOOR