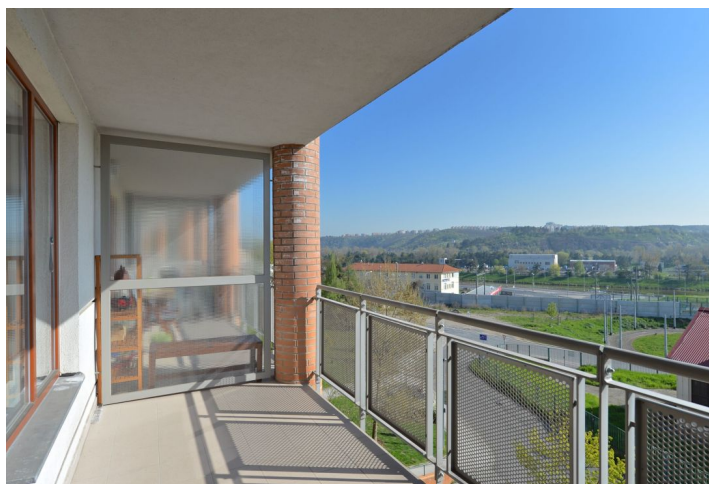




Apartment One-bedroom (2+kk)

Rented

73 m², Prague 6, Dejvice, Máslova





Apartment One-bedroom (2+kk)

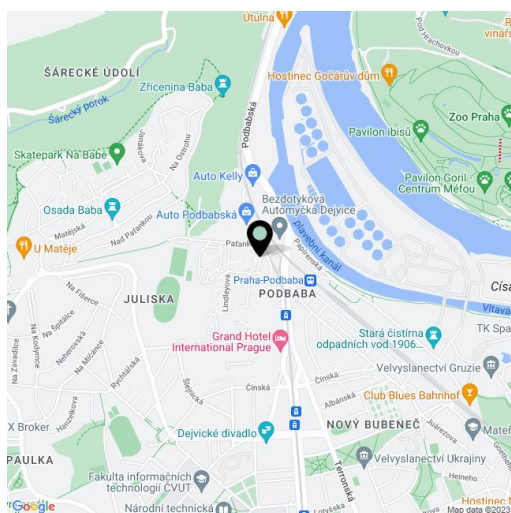
Rented73 m², Prague 6, Dejvice, Máslova

Total area	83 m ²
Floor area*	73 m ²
Terrace	10 m ²
Parking	Garage parking.
Garage	Yes
Cellar	Yes
PENB	G
Reference number	22471
Available from	Immediately

Benefiting from a 10 m² terrace providing nice views of the Vltava river and the green hills beyond, this is a furnished 1-bedroom flat on the third floor of a modern residential project with underground parking. Well located in a natural park-like area under the Baba neighborhood, with full amenities in close vicinity. Within quick reach of the Vltava riverbank, Šárecké Valley, Stromovka Park, a few tram or bus stops from Dejvická metro station, convenient to the airport and international schools.

The flat features living room with a fully fitted open kitchen and terrace access, one bedroom facing the green courtyard, bathroom with bathtub, sink and toilet, and entry hall.

Hardwood and tile floors, French windows, security entry door, central heating, washing machine, dishwasher, TV, video entry phone, Internet, 8 m² cellar. Camera system and lift in the building. One garage parking space available at CZK 1500/month. Common building charges and deposit for utilities around CZK 3500/month. Electricity is billed separately. Flat: 73 m². Terrace: 10 m².



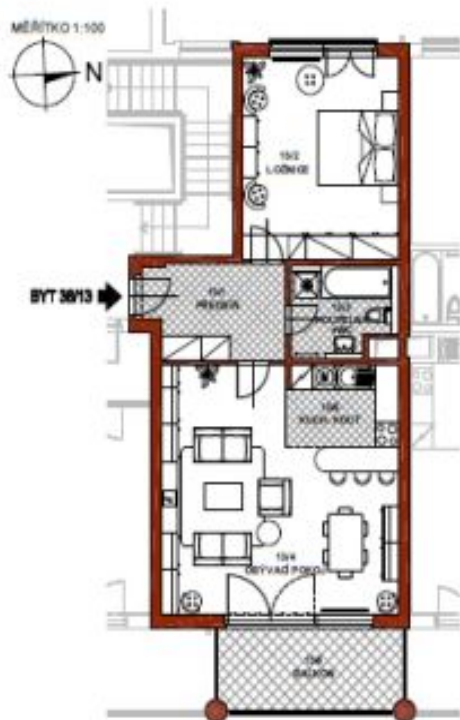
* Area of the unit according to the Civil Code. The area consists of the sum total area of the entire unit bounded by perimeter walls.



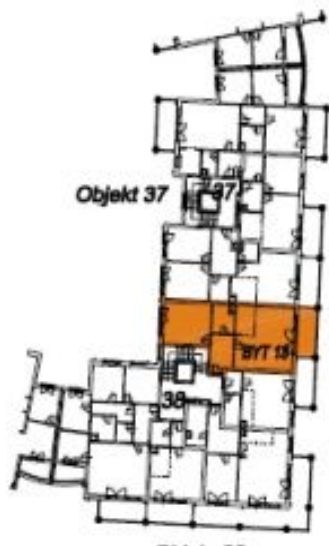
Apartment One-bedroom (2+kk)

73 m², Prague 6, Dejvice, Máslova

Rented



OBJEKT 38		3 n. p.	
BYT 13			m ²
PŘEDSÍŇ	13/1	8,64	
LOŽNICE	13/2	20,23	
KOUPELNA+WC	13/0	5,80	
OBYVACÍ POKOJ	13/4	31,75	
KUCHYNSKÝ KOUT	13/5	5,78	
CELKOVÁ PODLAHOVÁ PLOCHA		72,20	
CELKOVÁ PLOCHA BYTU		73,45	
BALKÓN	13/6	9,89	
CELKOVÁ PLOCHA		83,34	



BYT 13