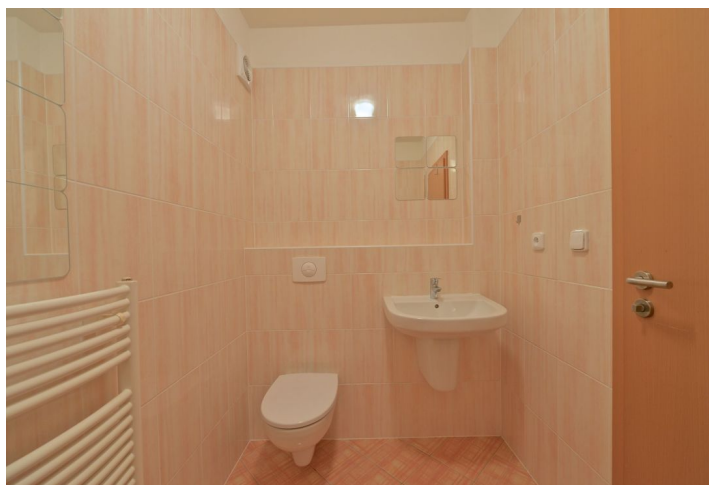




## Apartment One-bedroom (2+kk)

Rented

59 m<sup>2</sup>, Prague 7, Holešovice, Na Maninách





## Apartment One-bedroom (2+kk)

Rented

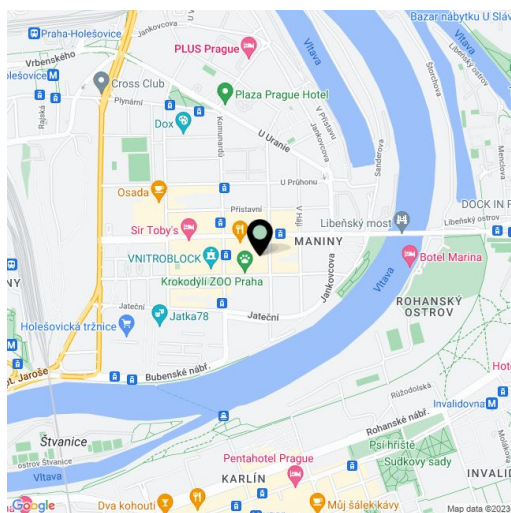
59 m<sup>2</sup>, Prague 7, Holešovice, Na Maninách

Total area	63 m <sup>2</sup>
Floor area*	59 m <sup>2</sup>
Balcony	4 m <sup>2</sup>
Parking	Garage parking space available.
Cellar	Yes
PENB	G
Reference number	22528
Available from	Immediately

**Bright sunny unfurnished 1-bedroom flat with balcony on the 5th floor of the new multi-purpose project Avenium Residence. Located close to the city center, in the dynamically growing central part of the Holešovice neighborhood.**

The flat has a living room with fully fitted modern kitchen, bedroom, bathroom with bath tub and sink, separate toilet with sink, an entry hall and a spacious storage room on the same floor.

Floating floors and tiles, security door, lift, 24-hour security, inner courtyard with plenty of greenery. Garage parking space available. Within walking distance of metro stations Palmovka, Vltavská and Nádraží Holešovice. Common building charges and deposit for utilities CZK 3,858/month.



\* Area of the unit according to the Civil Code. The area consists of the sum total area of the entire unit bounded by perimeter walls.