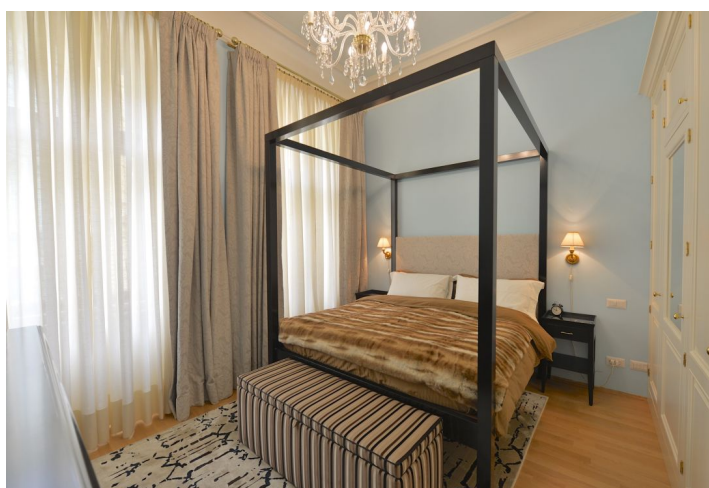
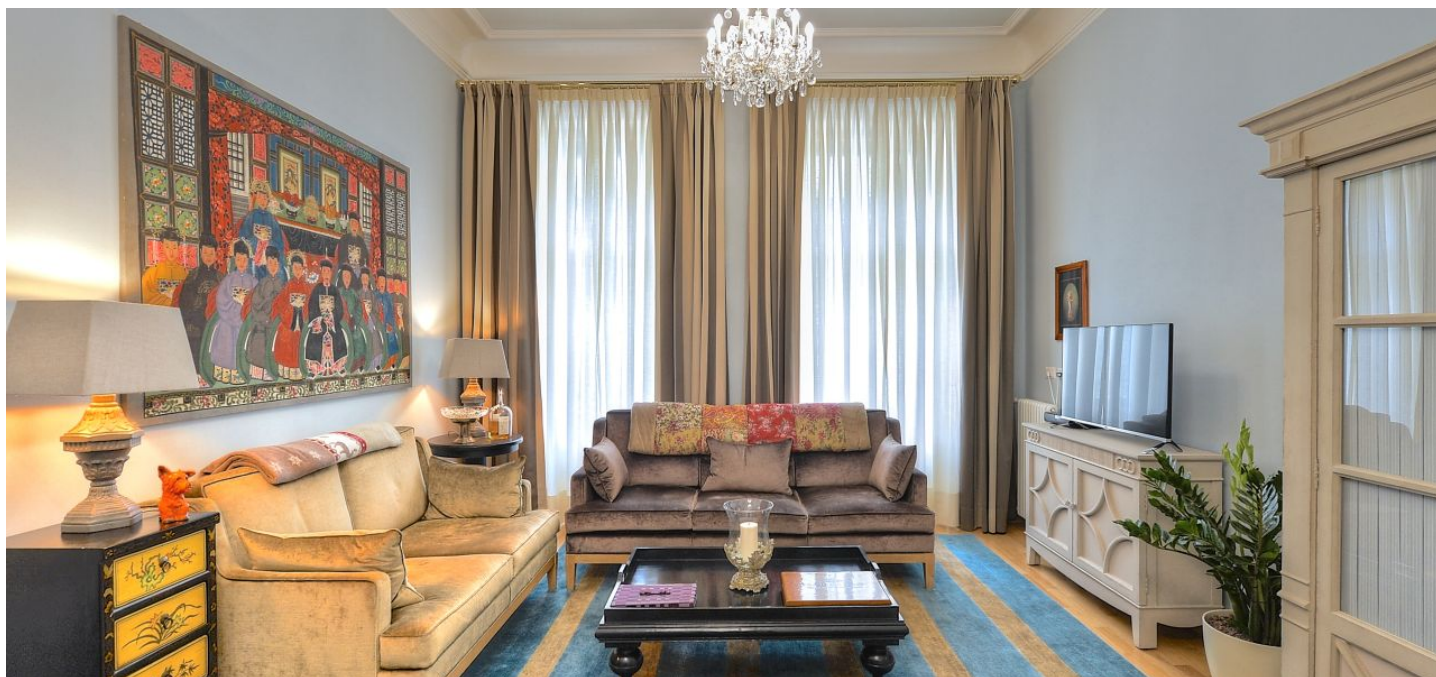




## Apartment Two-bedroom (3+1)

Rented

102 m<sup>2</sup>, Praha 2, Vinohrady, Mánesova





## Apartment Two-bedroom (3+1)

Rented

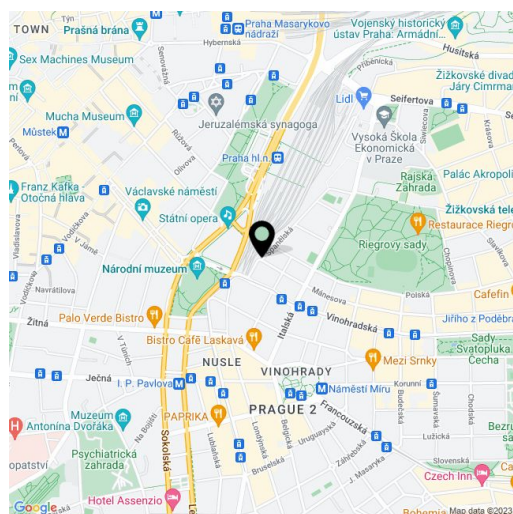
102 m<sup>2</sup>, Praha 2, Vinohrady, Mánesova

Total area	111 m <sup>2</sup>
Floor area*	102 m <sup>2</sup>
Terrace	9 m <sup>2</sup>
Parking	-
Cellar	-
Service price	Common building charges and water around CZK 4,200/month. Gas and electricity are billed separately (transferred to the tenant).
PENB	Not required
Reference number	22556
Available from	Immediately

Benefiting from a 9 sq. m. south-facing terrace, this completely renovated and fully furnished high-quality apartment is situated on the third floor of a meticulously reconstructed historic building with a new elevator. An attractive residential part of Vinohrady, moments from lovely Riegrovy Sady Park and within walking distance of Wenceslas Square with access to all three Prague metro lines and full amenities.

The interior features a central entry hall, a living room, a fully fitted eat-in kitchen, two bedrooms, two bathrooms (bathtub/walk-in shower, sink, bidet, toilet), and a laundry room. The terrace is accessible from the kitchen and one bedroom.

Preserved original features, large amount of built-in wardrobes and storage, custom-made furniture and equipment, high ceilings, large windows, art and decorations, wooden floors, tiles, security entrance door, washer, dryer, dishwasher, two TV sets, alarm, terrace furniture.



\* Area of the unit according to the Civil Code. The area consists of the sum total area of the entire unit bounded by perimeter walls.