



Office building

Praha 5, Smíchov, Na Březince

Rented





Office building

Praha 5, Smíchov, Na Březince

Rented

Service price	70 CZK monthly per m ²
Total building area	886 m ²
Tenant consumption	—
Parking	Yes
Parking service charges	—
Parking ratio	—
Certification	—
PENB	G
Reference number	22593

Office space for lease in a building with good transport accessibility, located in a quiet part of Prague 5 - Smichov. The building has recently been sensitively renovated and currently used for administrative purposes. Lift, air conditioning, security and parking - 1 parking space is included in the rental price.

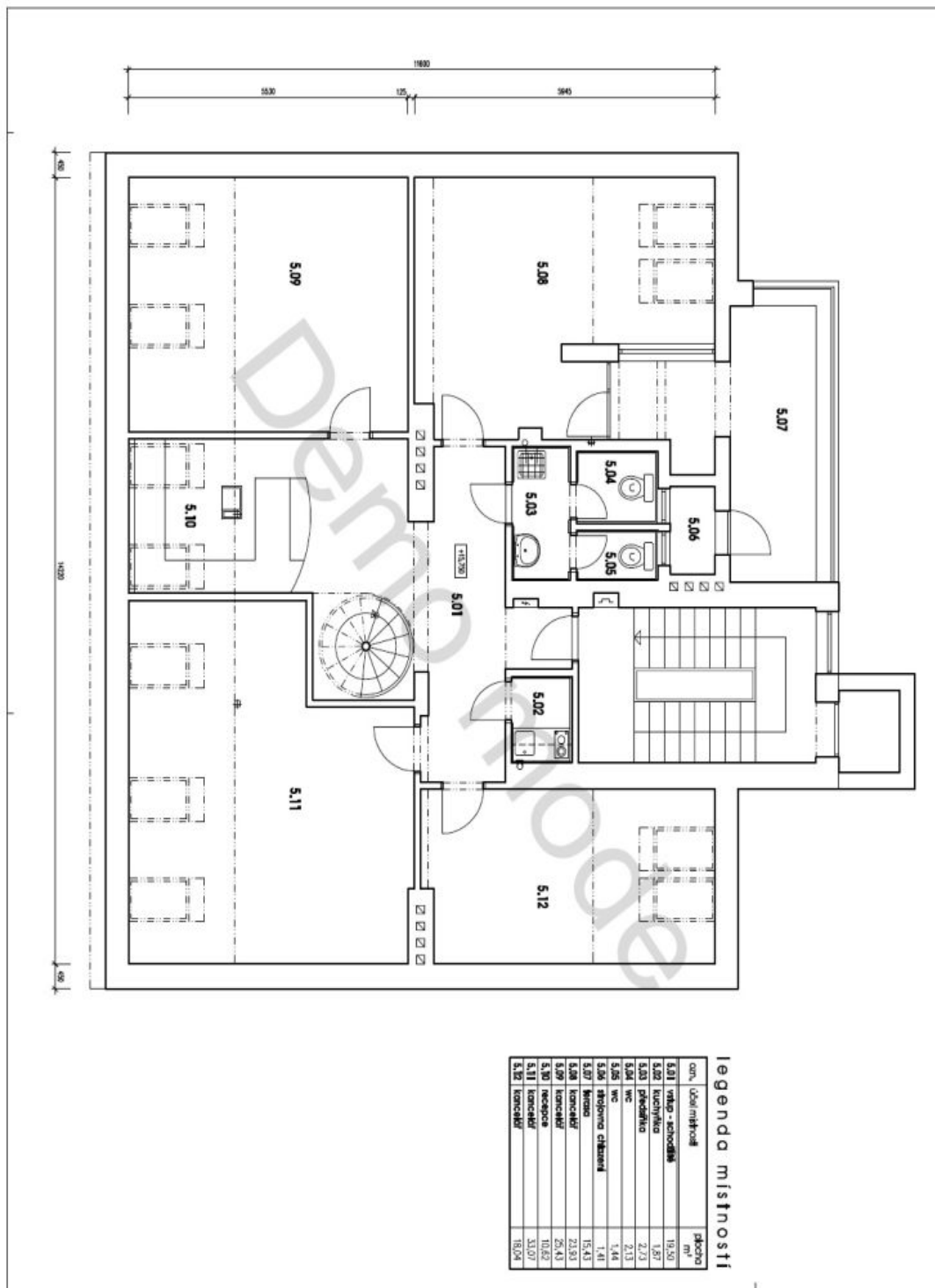
Location:

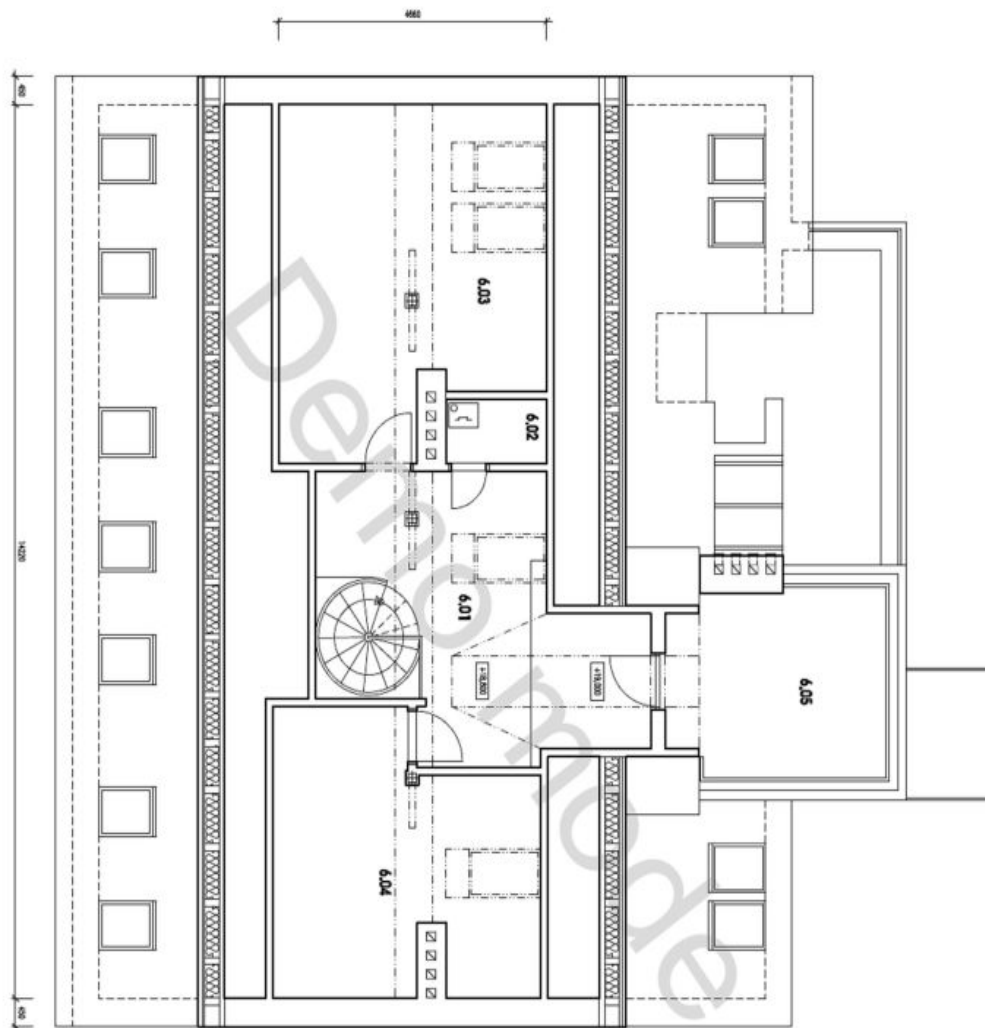
Easily accessible by public transport – there is a bus stop close-by. Tram stops and the Anděl metro station (line B) are approx. 10 minutes on foot. In close vicinity of two city parks and Anděl shopping and entertainment center.

Features and Services:

- Security of the building
- Parking in front of the building
- Telephone lines
- Computer network distribution
- Cleaning of offices by agreement
- Air conditioning
- Lift

Rental and service charges listed without VAT. Lessee pays no commission.





legenda místnosti

ozn.	Učel místnosti	řádková
6.01	výhledová míst. svobod&williams	22,27
6.02	komora	1,90
6.03		24,81
6.04		19,25
6.05	hromada	11,02