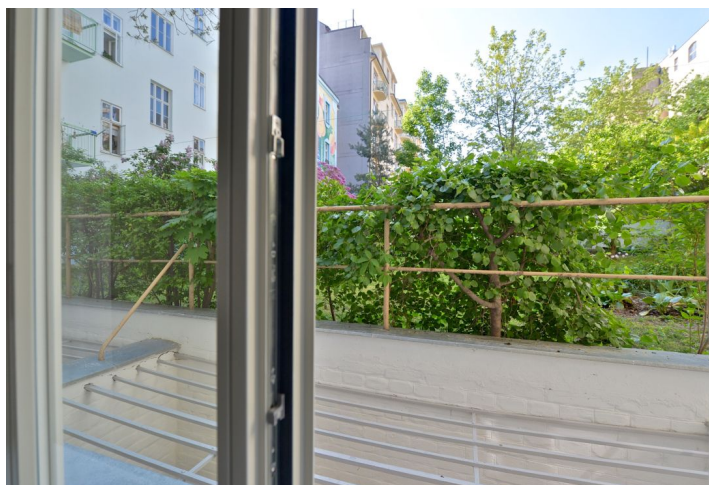
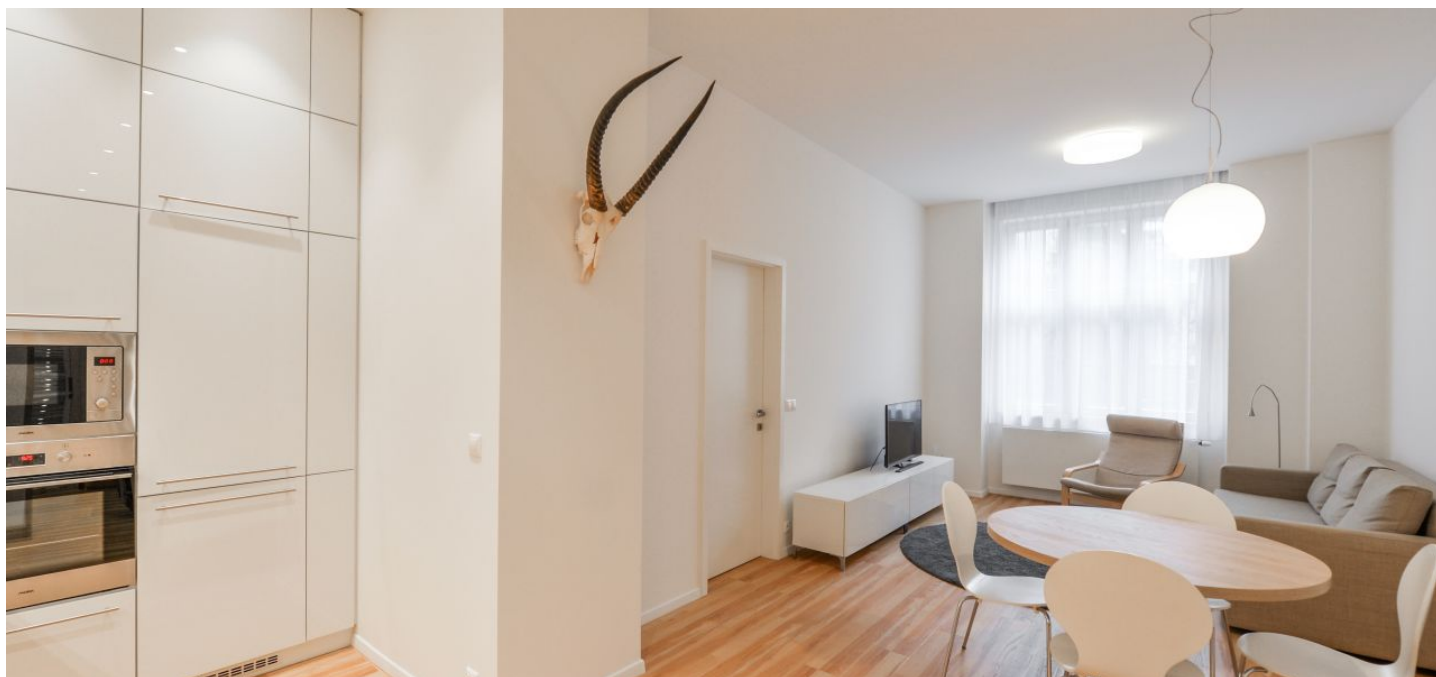




## Apartment Two-bedroom (3+kk)

Rented

88 m<sup>2</sup>, Prague 7, Bubeneč, Ovenceká





## Apartment Two-bedroom (3+kk)

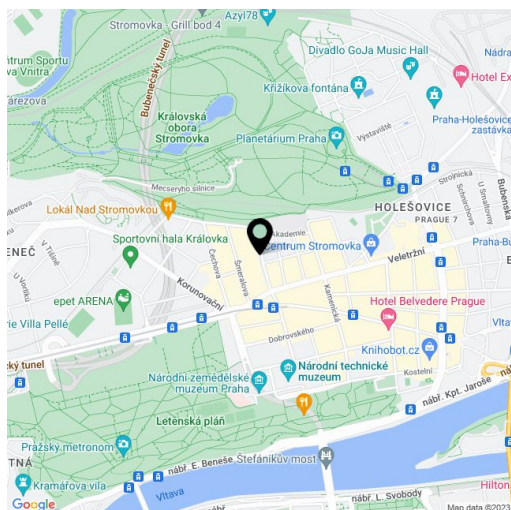
**Rented**88 m<sup>2</sup>, Prague 7, Bubeneč, Ovenceká

Total area	88 m <sup>2</sup>
Parking	Possibility to rent one on-site underground garage parking space for CZK 2500/month.
Garage	Yes
Cellar	-
PENB	D
Reference number	22600
Available from	Immediately

Benefiting from an excellent location just steps from Stromovka Park, the largest park in Prague, this is a fully furnished 2-bedroom 2-bathroom ground floor flat in a modern residence that has recently undergone complete renovation. Situated in a quiet street in the prestigious neighborhood of Bubeneč, with great transportation access - Letenské náměstí tram stop is a short walk from the building, a few short tram stops to Hradčanská and Vltavská metro stations. Conveniently located for the Letenské Sady Park, the Prague Castle, the airport and international schools.

The interior features a living room with a dining area and a fully fitted open plan kitchen, a master bedroom with a large fitted **walk-in closet** and an ensuite shower room, a second bedroom, a family shower room, two toilets, and an entrance hall. The windows are oriented towards the quiet green courtyard.

Vinyl floors, large windows, lots of built-in wardrobes and storage, washer, dishwasher, microwave oven, TV, video entry phone, 5.8 m<sup>2</sup> **cellar**. Possibility to rent one on-site underground **garage parking** space for CZK 2500/month. Deposit for common building charges and utilities including the Internet and UPC TV: CZK 6000/month.



\* Area of the unit according to the Civil Code. The area consists of the sum total area of the entire unit bounded by perimeter walls.