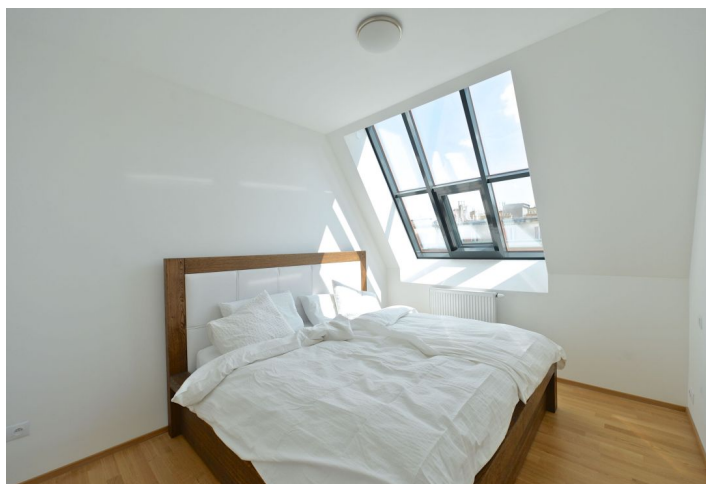




Apartment One-bedroom (2+kk)

€ 1 012 | CZK 25 000

69 m², Prague 3, Žižkov, Lucemburská





Apartment One-bedroom (2+kk)

€ 1 012 | CZK 25 000

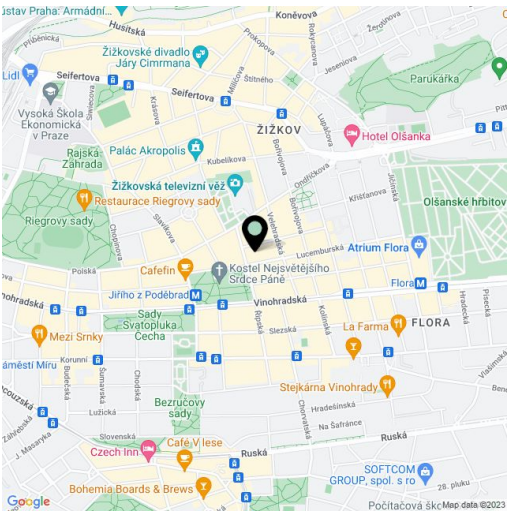
69 m², Prague 3, Žižkov, Lucemburská

Total area	79 m²
Floor area*	69 m²
Terrace	10 m²
Parking	-
Cellar	-
PENB	G
Reference number	22603
Available from	Immediately

Benefiting from a 10 m² terrace and beautiful far reaching green views, this is a new partly furnished 1-bedroom 2-bathroom split-level attic flat with an additional study. Situated on the fourth floor of a fully refurbished traditional building with lift and secure entrance. Well located on the border of Žižkov and Vinohrady neighborhoods, with quick access to the city center, just a few minute walk to Jiřího z Poděbrad metro station, line A, and within walking distance of Palace Flora shopping mall and full amenities.

The lower level includes living room with a fully fitted open kitchen and an adjacent study - both with terrace access, bathroom (bathtub, toilet), fitted walk-in closet, and an open entry hall. The upper floor features one bedroom with atelier windows, and shower bathroom with toilet.

Views of a green park with a children's playground in the courtyard of the building, solid wood parquet floors, security entry door, floor-to-ceiling and French windows, washer, dishwasher, video entry phone. Can be fully furnished at a higher rent. Common building charges and utilities CZK 4000/month max. Interior 69 m², terrace 10 m².



* Area of the unit according to the Civil Code. The area consists of the sum total area of the entire unit bounded by perimeter walls.