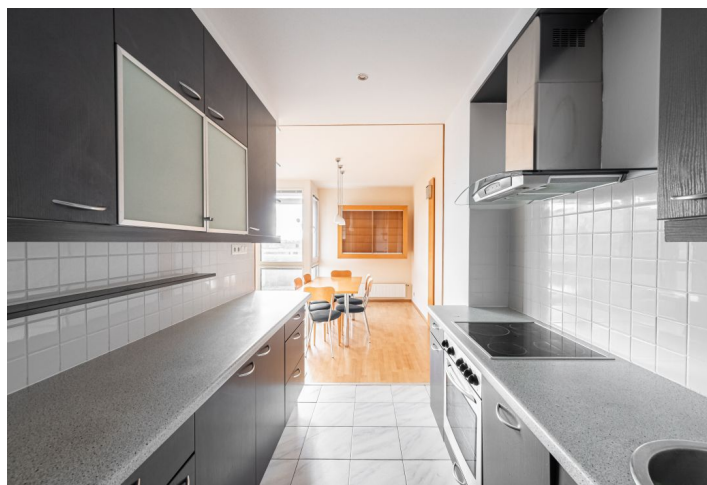
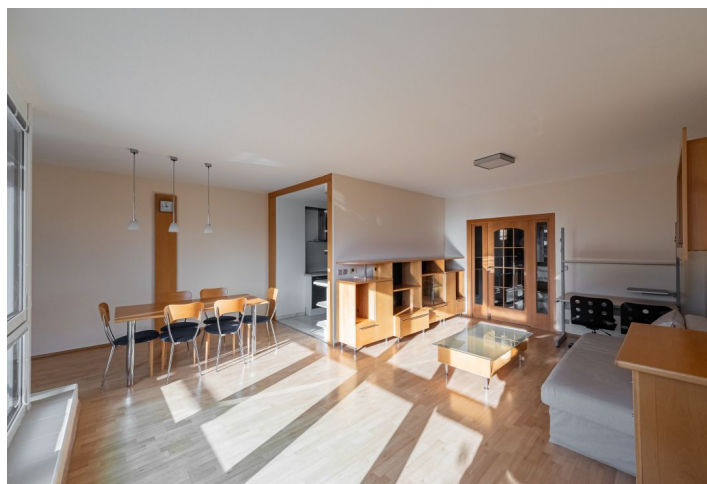
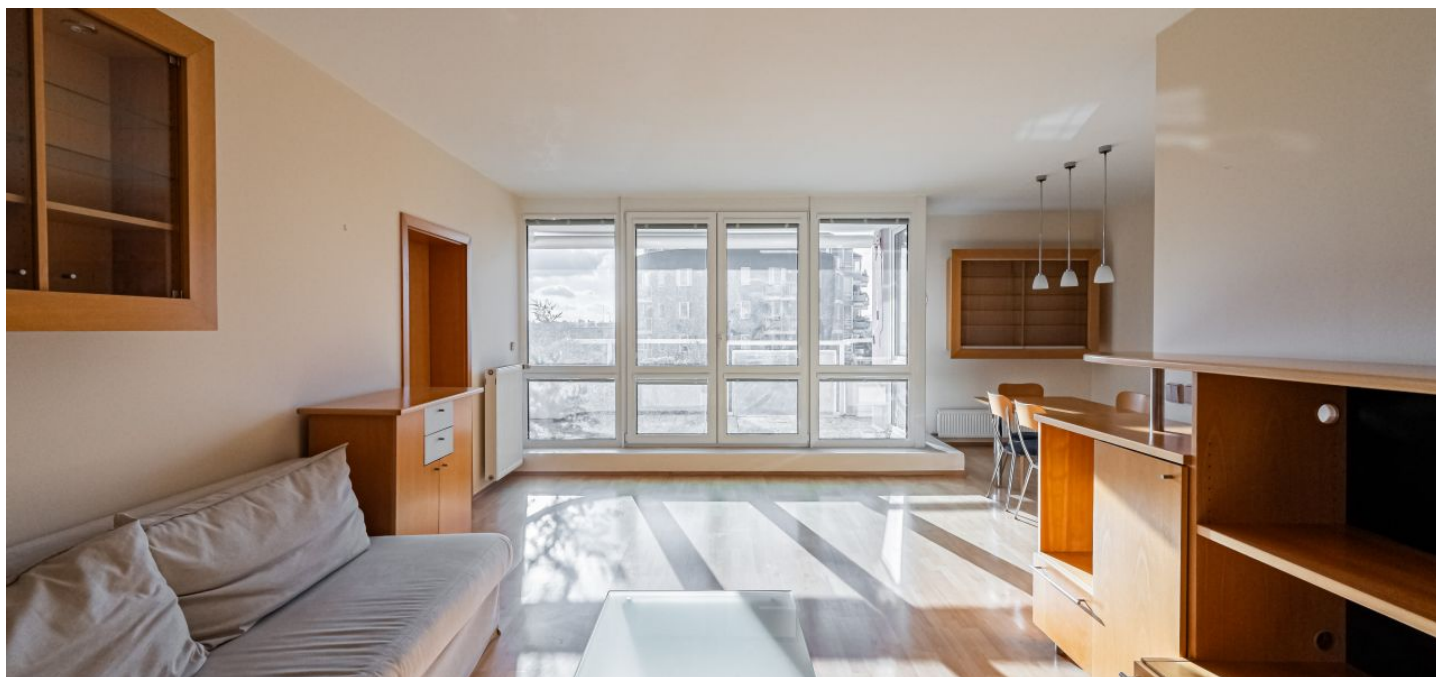




Apartment Three-bedroom (4+kk)

Rented

107 m², Prague 5, Jinonice, U Kříže





Apartment Three-bedroom (4+kk)

Rented

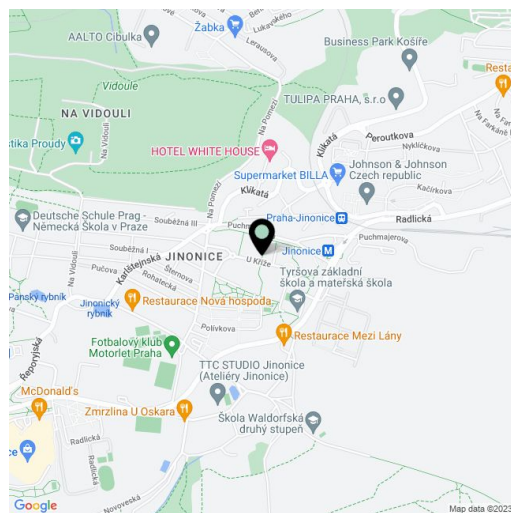
107 m², Prague 5, Jinonice, U Kříže

Total area	133 m ²
Floor area*	107 m ²
Terrace	26 m ²
Parking	Garage parking.
Garage	Yes
Cellar	Yes
Service price	Common building charges and water around CZK 2,500/month. Gas and electricity are billed separately.
PENB	G
Reference number	22605
Available from	01.05.2025

This fully furnished apartment with a 26 sq. m. terrace and beautiful green views is situated on the second floor of a residential building with an elevator and underground parking. A quiet green area near the Vidoule and Prokopské Valley natural preserves, with quick access to the German and Japanese Schools. Five min. to the Jinonice metro station, with amenities within easy reach and convenient to the Galerie Butovice shopping mall.

The interior includes a living room with a dining area and a fully fitted open plan kitchen, two separate bedrooms, a master bedroom accessible from the living room, two bathrooms (bathtub/walk-in shower, sink, toilet), and an entry hall. The terrace is accessible from the living room and master bedroom.

Laminate floors and tiles, built-in wardrobes and storage, security entry door, blinds, terrace awning, dishwasher, microwave oven, TV, satellite reception, audio entry phone, 3.8 sq. m. basement storage room. One garage parking space included.



* Area of the unit according to the Civil Code. The area consists of the sum total area of the entire unit bounded by perimeter walls.