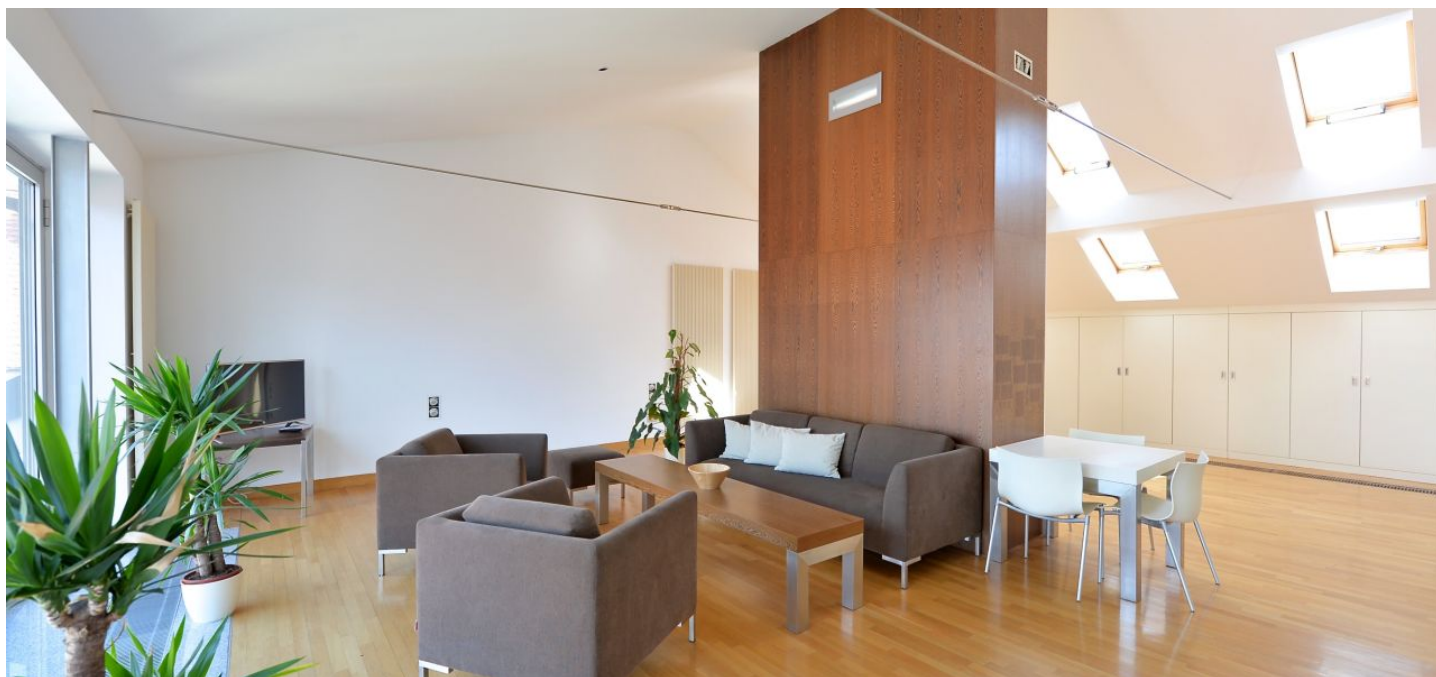




Apartment One-bedroom (2+kk)

Rented

110 m², Prague 1, Staré Město, Haštalská





Apartment One-bedroom (2+kk)

Rented

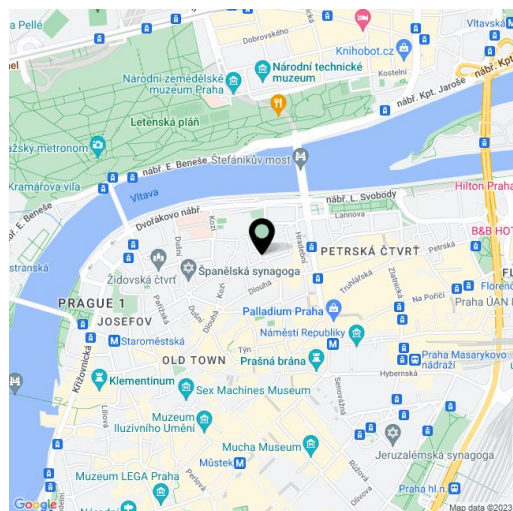
110 m², Prague 1, Staré Město, Haštalská

Total area	122 m ²
Floor area*	110 m ²
Terrace	12 m ²
Parking	-
Cellar	-
Service price	Common building charges and utilities CZK 3800 per month.
PENB	G
Reference number	22606
Available from	Immediately

Benefiting from views of the Prague Castle, Petřín Hill, Letná Park and the Old Town, this is a high standard comfortable 1-bedroom attic flat with a 12 m² terrace. Situated on the fourth floor of a renovated residential building with no lift, just minutes from the Vltava riverbank. Conveniently centrally located in a quiet street a short walk from the Old Town Square and Náměstí Republiky metro station, with full amenities in the area.

The interior includes a generous living room with a fully fitted open kitchen, dining area, a partly separated study corner and access to the terrace, one bedroom with an en-suite shower bathroom (double sink, bidet, toilet), a guest toilet, and entry hall.

High ceilings, floor-to-ceiling windows in the living room, lots of built-in wardrobes and storage, hardwood floors, marble tiling in the bathroom, security entry door, gas boiler, washing machine, TV, alarm.



* Area of the unit according to the Civil Code. The area consists of the sum total area of the entire unit bounded by perimeter walls.