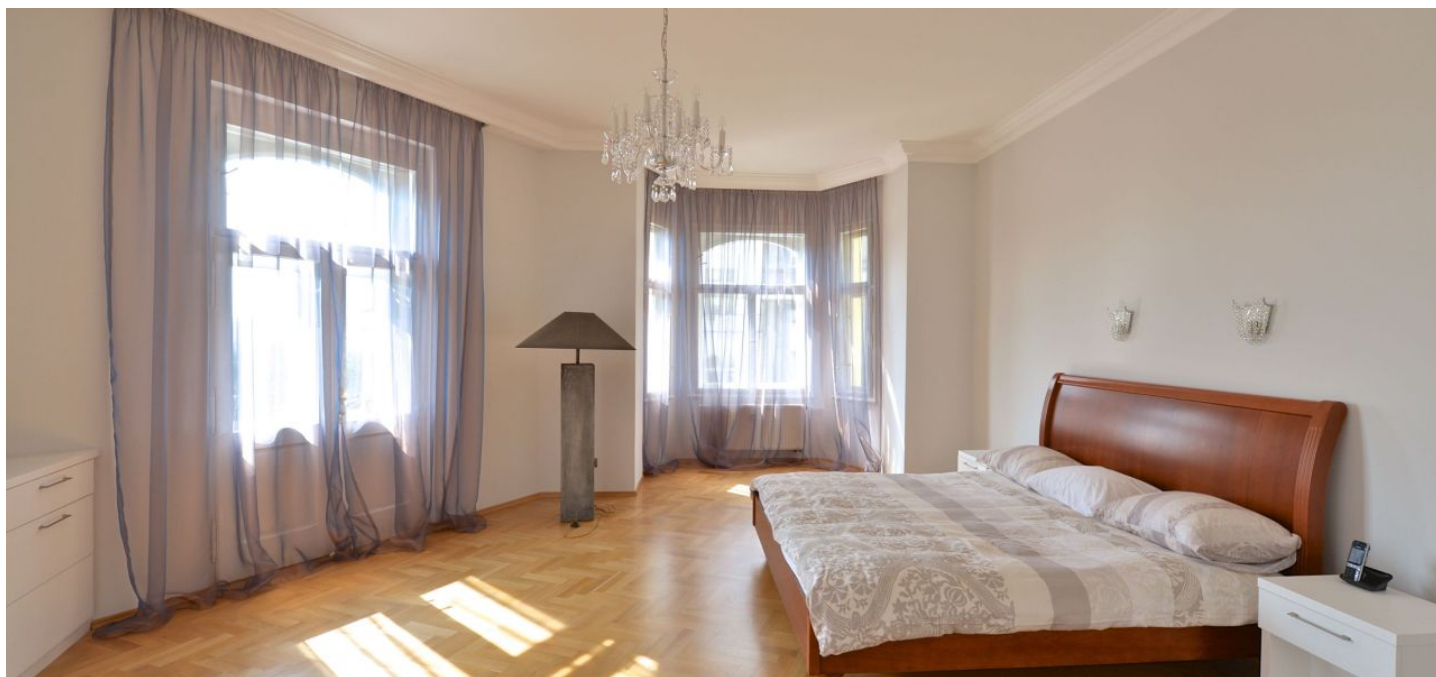




Apartment One-bedroom (2+1)

Sold

97 m², Prague 10, Vršovice, Žitomířská





Apartment One-bedroom (2+1)

Sold97 m², Prague 10, Vršovice, Žitomířská

Total area	99 m ²
Floor area*	97 m ²
Balcony	2 m ²
Parking	-
Cellar	-
PENB	E
Reference number	22611

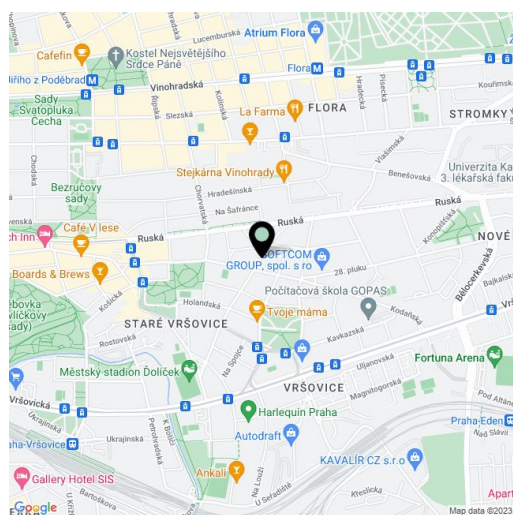
Sunny apartment after a complete reconstruction with 2 balconies and bay windows, located on the 3rd floor of the south-facing corner house with a beautiful Art Nouveau façade. Attractive residential area on the border of Vinohrady and Vršovice, near Heroldovy sady park and within walking distance of Gröbovka park.

The layout features a bedroom with 2 large bay windows and balcony, living room with another balcony, kitchen, bathroom, and a hallway.

There are **wooden parquet floors**, Onice Engiziano ceramic and black granite tiles and paneling, **refurbished casement windows** with interfenestral blinds, new double doors, security entry door, **Scavolini** kitchen with white marble counter and **Siemens/AEG** appliances, Perland Gold bathroom fixtures, crystal chandeliers, central heating by Radik radiators.

Nice location in Vršovice within easy reach of all amenities - schools, shops, restaurants and cafes. 3-minute walk from the Vršovické náměstí tram stop with connections to the metro at náměstí Míru Square, I. P. Pavlova and Karlovo náměstí square.

Interior 95.2 m², balcony 1.7 + 1.7 m²



* Area of the unit according to the Civil Code. The area consists of the sum total area of the entire unit bounded by perimeter walls.



Apartment One-bedroom (2+1)

97 m², Prague 10, Vršovice, Žitomířská

Sold

