



Land

709 m², Praha 9, Letňany, Toužimská

Sold





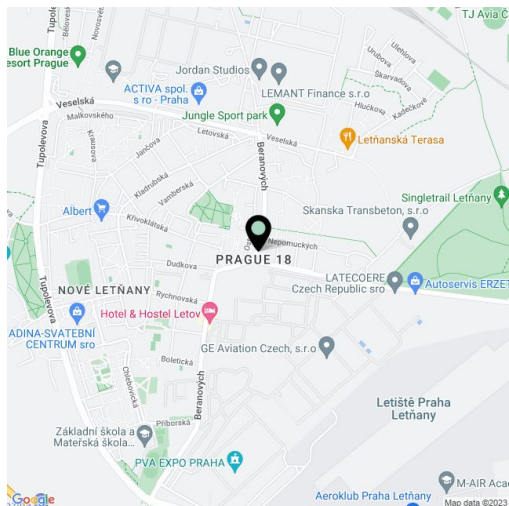
Land

709 m², Praha 9, Letňany, Toužimská

Sold

Price per sq. m.	20 CZK
Total area	709 m ²
Land type	Housing
Reference number	22618

Sale of a building plot of **709 sq. m.** with a family house suitable for complete reconstruction or demolition, situated at the corner of Toužimská and Beranových streets. The plot offers a various options of use: construction of **a house for the elderly or of an apartment building with small-sized flats** (for which there is a study from 2012). On the plot is a 14 m deep well, water supply, electricity, 2 gas connections, Internet / landline. Location has complete amenities including a nursery and primary schools, playgrounds, cafes and restaurants. Bus stop with 5-minute connection to the Letňany metro station is situated directly in front of the house.

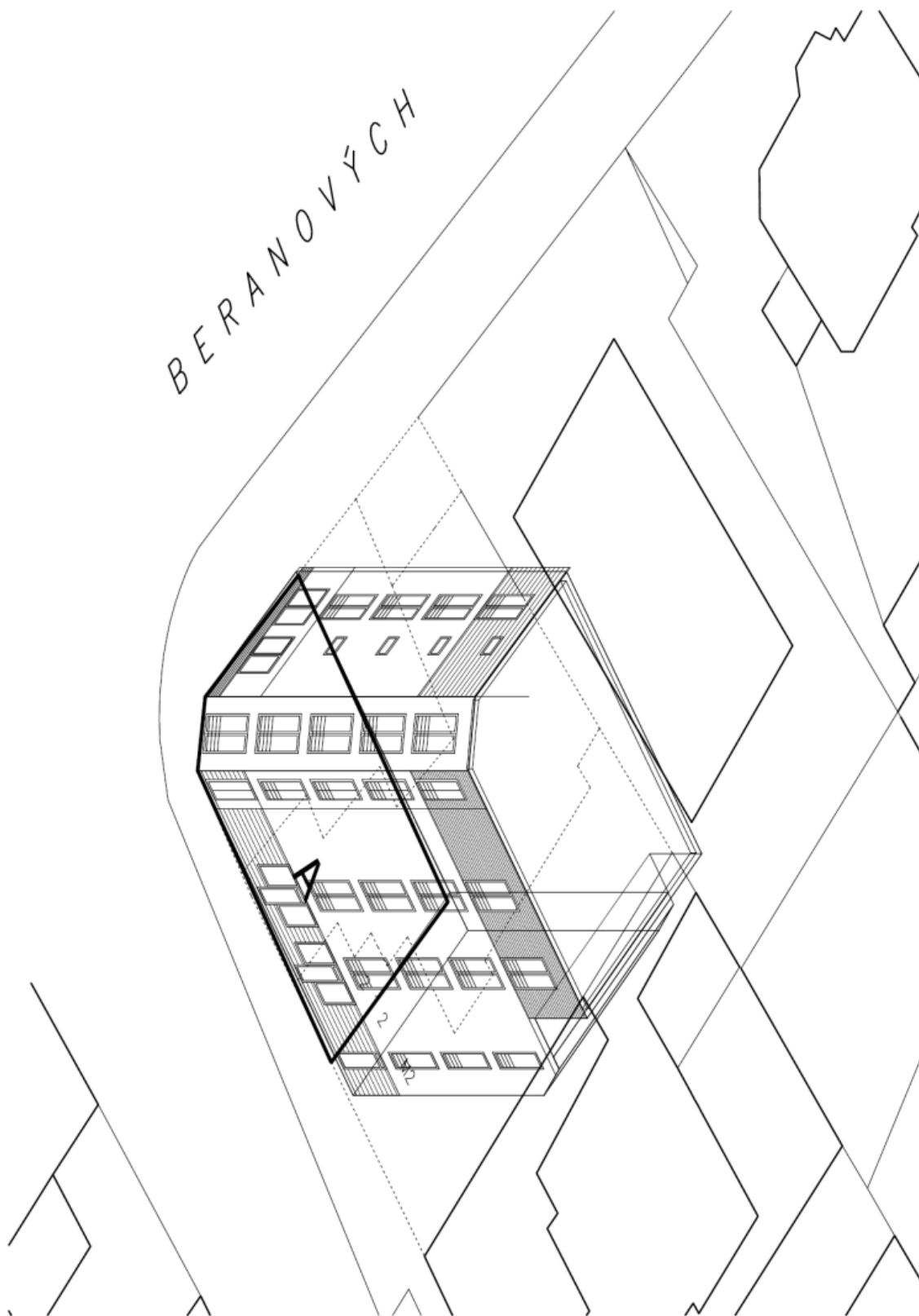




Land

709 m², Praha 9, Letňany, Toužimská

Sold

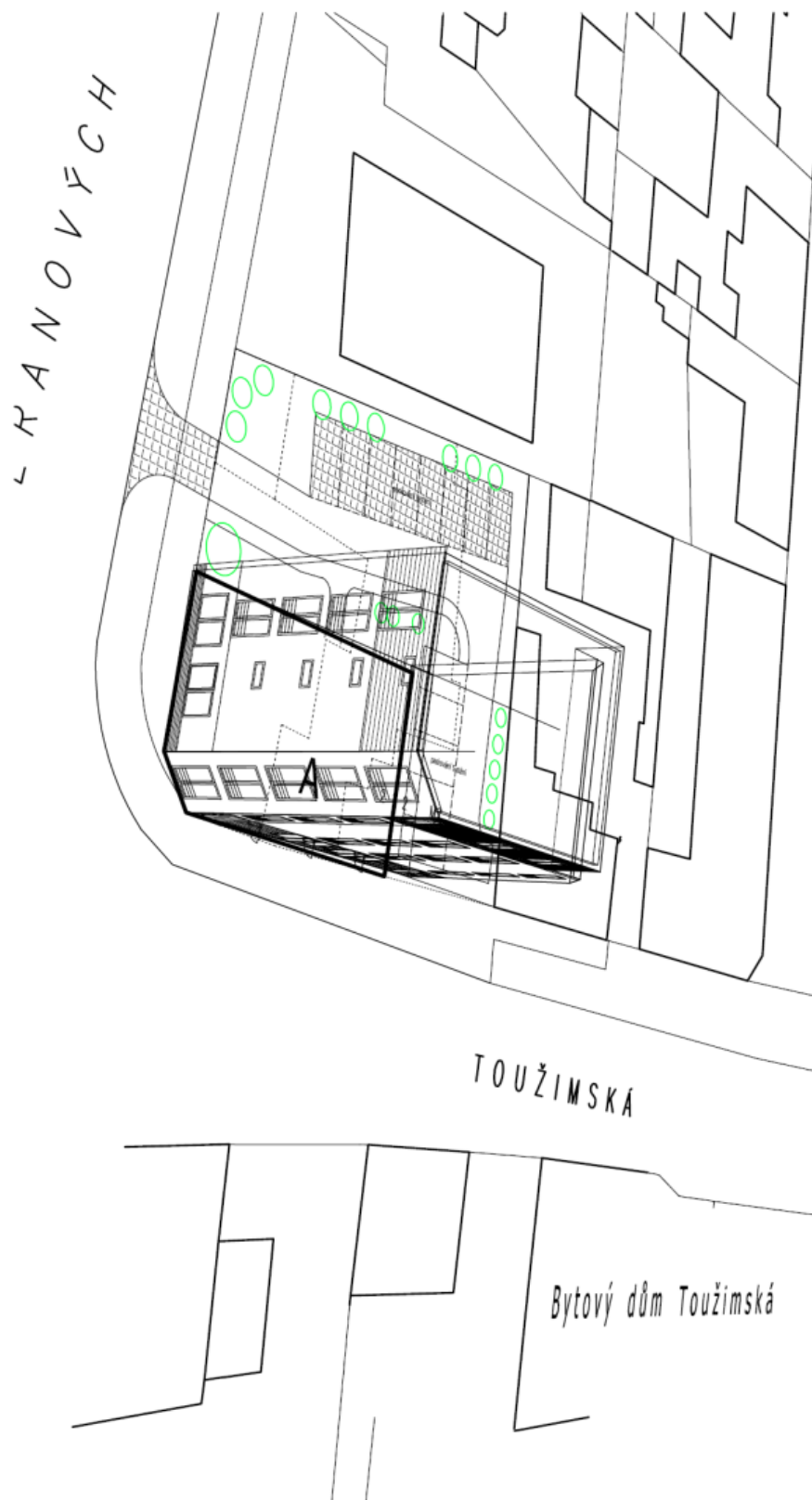




Land

709 m², Praha 9, Letňany, Toužimská

Sold

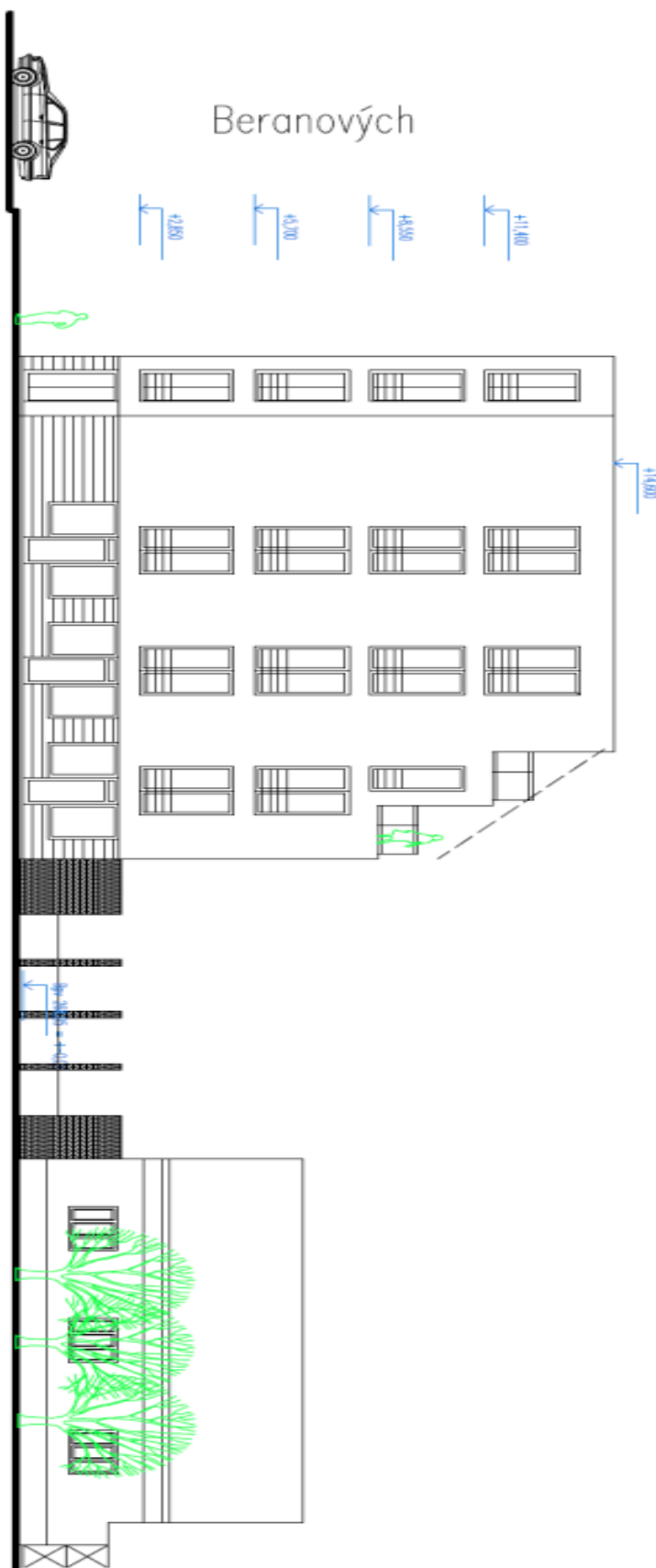




Land

709 m², Praha 9, Letňany, Toužimská

Sold





Land

709 m², Praha 9, Letňany, Toužimská

Sold

