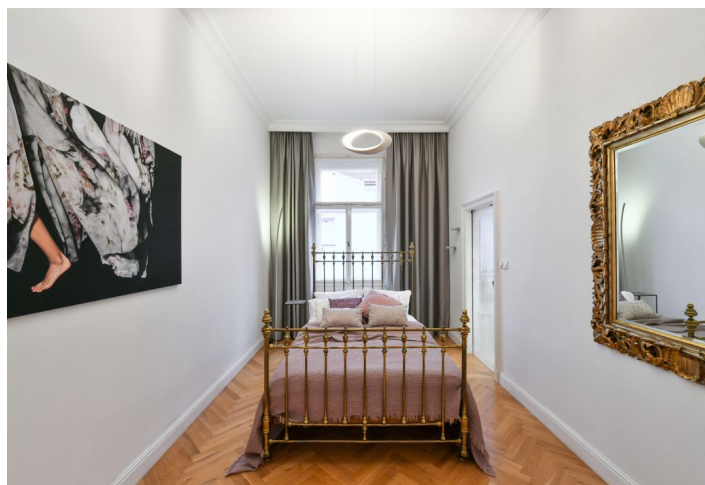




Apartment Three-bedroom (4+1)

Rented

140 m², Prague 1, Malá Strana, Újezd





Apartment Three-bedroom (4+1)

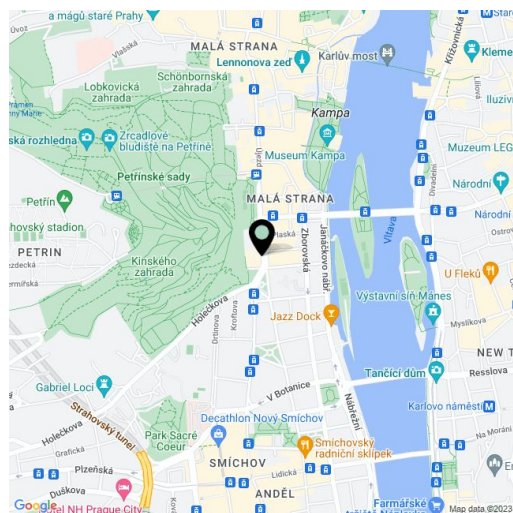
Rented140 m², Prague 1, Malá Strana, Újezd

Total area	142 m ²
Floor area*	140 m ²
Balcony	2 m ²
Parking	-
Cellar	Yes
PENB	G
Reference number	22683
Available from	Immediately

Boasting direct views of Petřín Hill with the Petřín Funicular, this fully refurbished and furnished 3-bedroom 2-bathroom apartment on the third floor of a traditional residential building with no elevator is centrally located under Petřín Hill Park, with great transportation connections, just minutes to Old Town, Kampa Park, and Charles Bridge, and only a few more to the Prague Castle and Nový Smíchov business and shopping center.

With airy rooms, the bright interior features a comfortable living room with a balcony, a fully fitted eat-in kitchen, a master bedroom with an en-suite bathroom with a bathtub and toilet, a second bedroom with a large walk-in closet, a third bedroom connected to the living room, a shower bathroom, a guest toilet, and a spacious entry hall.

Preserved original features, two working historic Dutch stoves, a new kitchen with plenty of storage cabinets, hardwood parquet floors, large windows, high ceilings, independent gas boiler, washer, dryer, dishwasher, microwave oven, large cellar. Common building charges included in the rent. Utilities (water, gas, electricity) are billed separately.



* Area of the unit according to the Civil Code. The area consists of the sum total area of the entire unit bounded by perimeter walls.



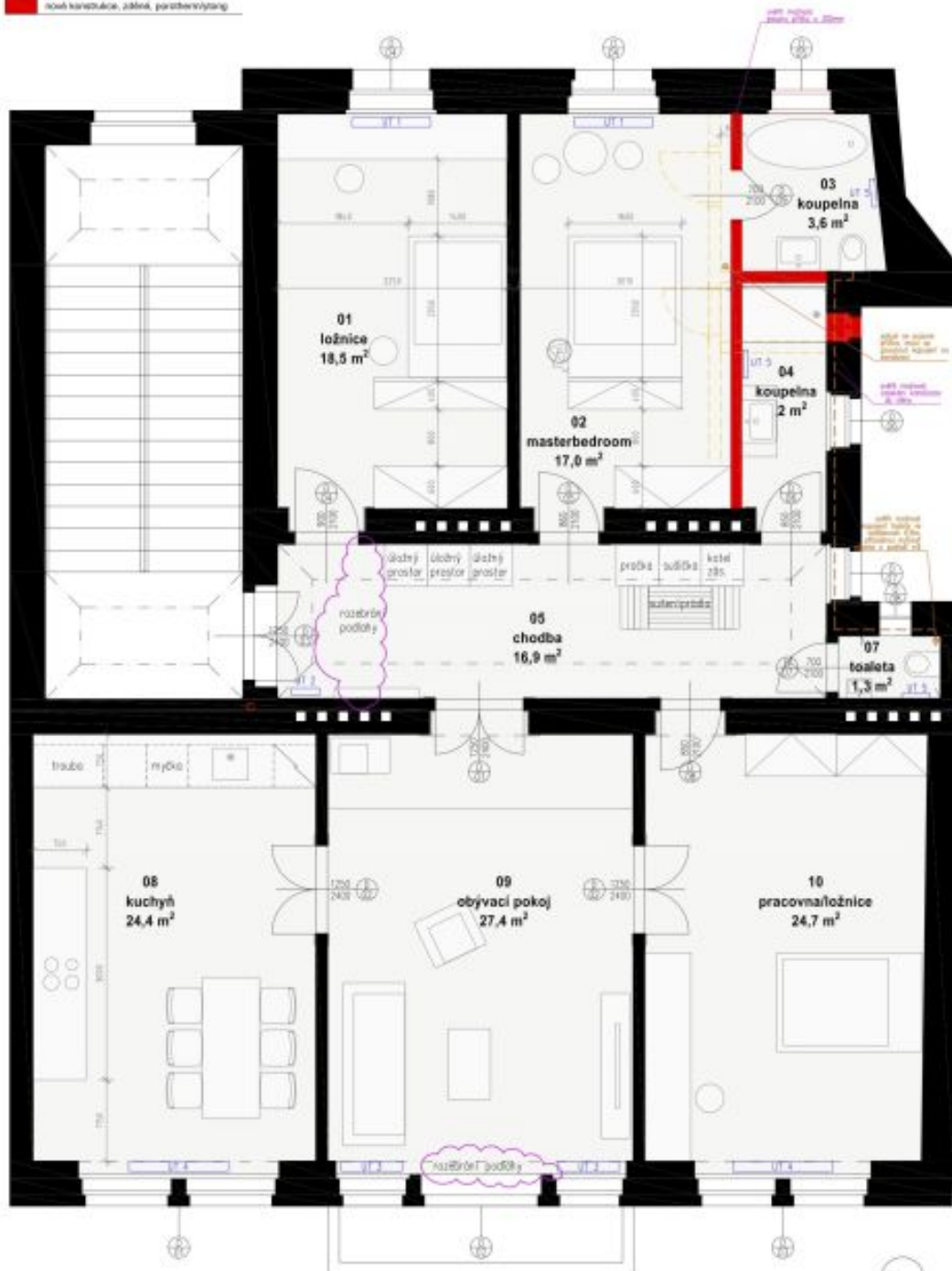
Apartment Three-bedroom (4+1)

Rented

140 m², Prague 1, Malá Strana, Újezd

LEGENDA

	stávající základní konstrukce
	bovenší konstrukce zdiel, ohráďená
	nová konstrukcia, základ, parobariery/izol.



www.atelierhoffman.eu

Byt Újezd

návrh v1, m 1:50