



Apartment Three-bedroom (4+kk)

Rented

115 m², Praha 6, Bubeneč, náměstí Interbrigády





Apartment Three-bedroom (4+kk)

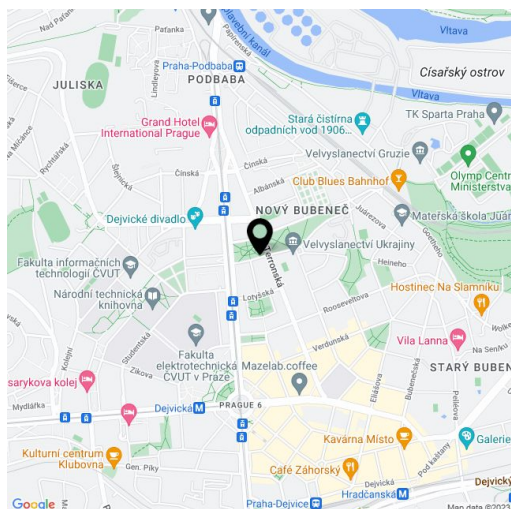
Rented115 m², Praha 6, Bubeneč, náměstí Interbrigádý

| | |
|------------------|---------------------------|
| Total area | 148 m ² |
| Floor area* | 115 m ² |
| Terrace | 33 m ² |
| Parking | Garage parking available. |
| Garage | Yes |
| Cellar | Yes |
| PENB | G |
| Reference number | 22707 |
| Available from | Immediately |

This brand new 3-bedroom 2-bathroom split-level attic flat greatly benefits from two comfortable terraces (total of 33 m²) and views of the Prague Castle, Petřín Hill, and Baba green neighborhood. Situated on the top fifth floor of a traditional building with a new lift and a shared courtyard garden, right next to a green park. Located in a quiet Prague 6 neighborhood about a five min. walk to Dejvická metro station with full amenities in the area, and within walking distance of the largest park in Prague, Stromovka. Convenient to international schools in Prague 6 and the airport.

The lower level features a spacious living room with dining area, a fully fitted open plan kitchen and terrace access, a guest toilet, entry hall. The upper floor includes three separate bedrooms - two with a shared terrace, and two bathrooms (tub / walk-in shower, toilet).

Large windows, laminated floors, security entry door, independent gas boiler, dishwasher, audio entry phone, large basement storage unit. Double garage available a few minute walk from the building. Common building charges and deposit for utilities are billed separately. Interior: 115 m². Terraces: 15 and 18 m².



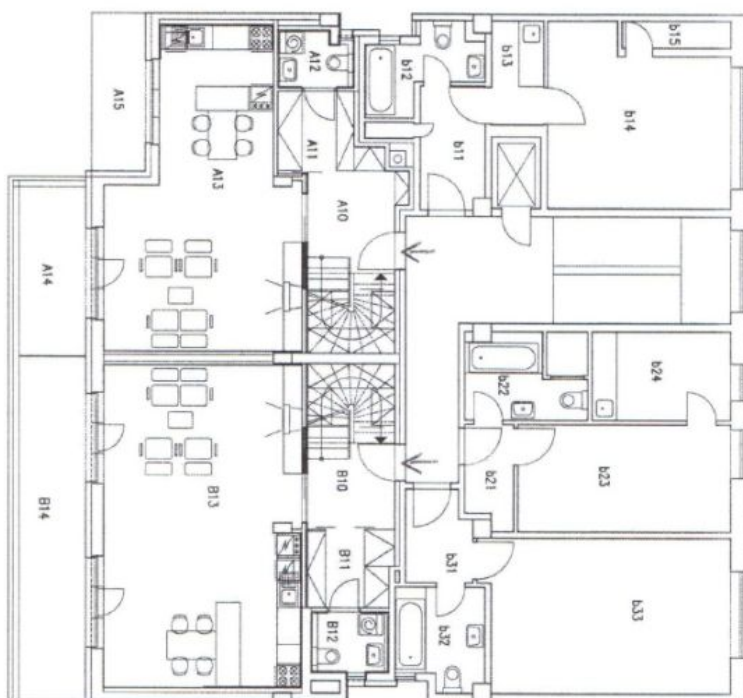
* Area of the unit according to the Civil Code. The area consists of the sum total area of the entire unit bounded by perimeter walls.



Apartment Three-bedroom (4+kk)

Rented

115 m², Praha 6, Bubeneč, náměstí Interbrigády



Přízemí

| MÍST ČÍS | NÁZEV MÍSTNOSTI | PLOCHA [m ²] | PODLAHA |
|-------------|----------------------------|-----------------------------|---------------|
| B10 | předstř. se schodištěm | 10,22 | plov. lamn. |
| B11 | sálno | 3,56 | plov. lamn. |
| B12 | záchod s pračkou | 2,22 | keram. dlaž. |
| B13 | obýv. pokoj s kuch. linkou | 30,56 | plov. lamn. |
| B14 | terasa | 8,09 | dřev. rošt |
| B15 | sítěna před kuchyní | | plech krytina |

| MÍST ČÍS | NÁZEV MÍSTNOSTI | PLOCHA [m ²] | PODLAHA |
|-------------|----------------------------|-----------------------------|--------------|
| A10 | předstř. se schodištěm | 8,61 | plov. lamn. |
| A11 | sálno | 3,93 | plov. lamn. |
| A12 | záchod a pračka | 2,46 | keram. dlaž. |
| A13 | obýv. pokoj s kuch. linkou | 38,05 | plov. lamn. |
| A14 | terasa | 14,66 | dřev. rošt |