



## Apartment Three-bedroom (4+kk)

Rented

107 m<sup>2</sup>, Prague 6, Bubeneč, Náměstí Interbrigády





## Apartment Three-bedroom (4+kk)

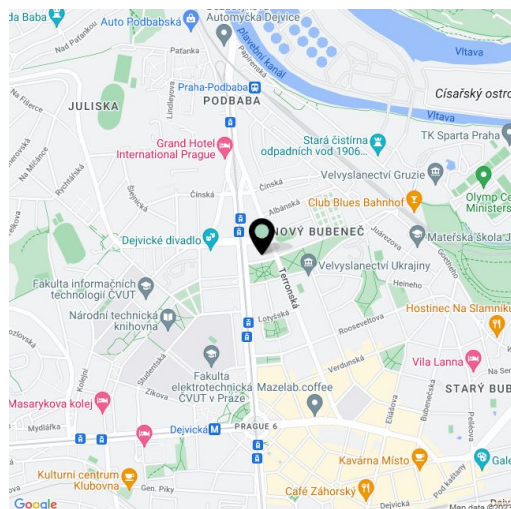
**Rented**107 m<sup>2</sup>, Prague 6, Bubeneč, Náměstí Interbrigády

Total area	128 m <sup>2</sup>
Floor area*	107 m <sup>2</sup>
Terrace	21 m <sup>2</sup>
Parking	Garage parking available.
Garage	Yes
Cellar	Yes
PENB	G
Reference number	22708
Available from	Immediately

This brand new 3-bedroom 2-bathroom split-level attic flat greatly benefits from two terraces (total of 21 m<sup>2</sup>) and views of the Prague Castle, Petřín Hill, and Baba green neighborhood. Situated on the top fifth floor of a traditional building with a new lift and a shared courtyard garden, right next to a green park. Located in a quiet Prague 6 neighborhood about a five min. walk to Dejvická metro station with full amenities in the area, and within walking distance of the largest park in Prague, Stromovka. Convenient to international schools in Prague 6 and the airport.

The lower level features a spacious living room with dining area, a fully fitted open plan kitchen and terrace access, a guest toilet, entry hall. The upper floor includes three separate bedrooms - two with a shared terrace, and two bathrooms (tub / walk-in shower, toilet).

French windows, laminated floors, security entry door, independent gas boiler, dishwasher, audio entry phone, large basement storage unit. Double garage available a few minute walk from the building. Common building charges and deposit for utilities are billed separately. Interior: 107 m<sup>2</sup>. Terraces: 8 and 13 m<sup>2</sup>.



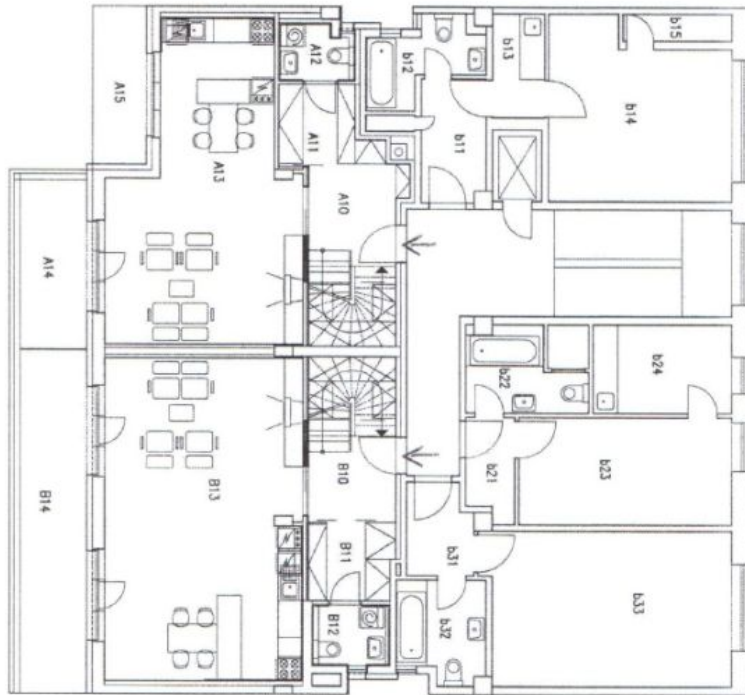
\* Area of the unit according to the Civil Code. The area consists of the sum total area of the entire unit bounded by perimeter walls.



# Apartment Three-bedroom (4+kk)

Rented

107 m<sup>2</sup>, Prague 6, Bubeneč, Náměstí Interbrigádý



Přízemí

MÍST ČÍS	NÁZEV MÍSTNOSTI	PLOCHA [m <sup>2</sup> ]	PODLAHA
B10	průběh se schodištěm	10,22	plov. lamn.
B11	šatna	3,56	plov. lamn.
B12	záchod s pračkou	2,22	keram. dlaž.
B13	obýv. pokoj s kuch. linkou	30,56	plov. lamn.
B14	terasa	8,09	dřev. rošt
B15	střešní před. kuchyň		plech. krytina

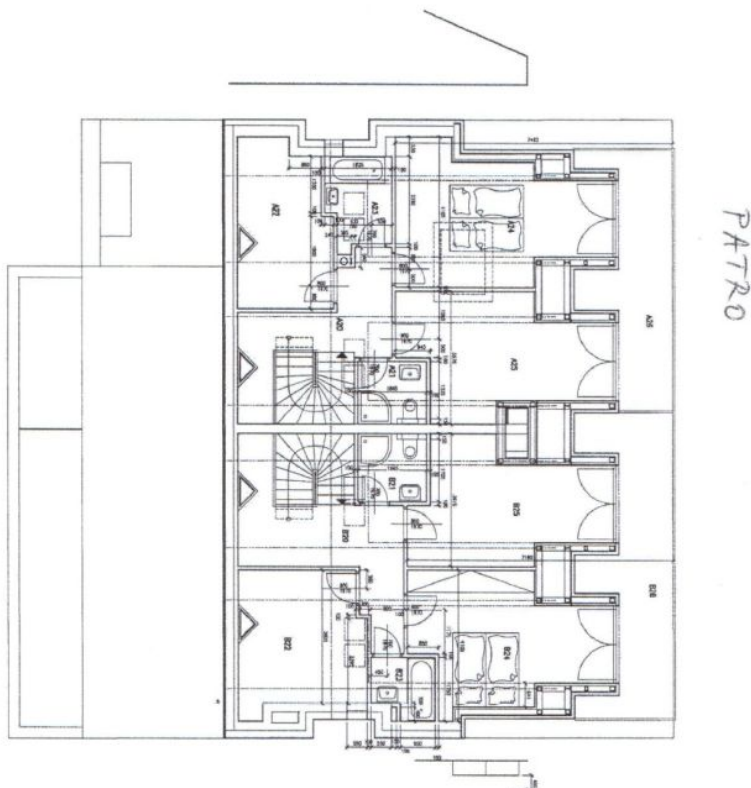
MÍST ČÍS	NÁZEV MÍSTNOSTI	PLOCHA [m <sup>2</sup> ]	PODLAHA
A10	průběh se schodištěm	8,61	plov. lamn.
A11	šatna	3,93	plov. lamn.
A12	záchod a pračka	2,46	keram. dlaž.
A13	obýv. pokoj s kuch. linkou	38,05	plov. lamn.
A14	terasa	14,66	dřev. rošt



# Apartment Three-bedroom (4+kk)

107 m<sup>2</sup>, Prague 6, Bubeneč, Náměstí Interbrigády

Rented



PÁTRŮ

TABULKA MÍSTNOSTI		
MÍSTO ČÍS	NÁZEV MÍSTNOSTI	PLŮCHŮ PODLAHA [m <sup>2</sup> ]
BřT A		
A20	schodišťové halo	8,89 plov. lamín.
A21	zobčod se sprchou	3,14 keram. dlaž.
A22	obloží	10,93 plov. lamín.
A23	kojcovna	4,19 keram. dlaž.
A24	ložnice	18,38 plov. lamín.
A25	obloží	15,55 plov. lamín.
A26	terasa	12,84 dřev. rošt
BřT B		
B20	schodišťové halo	11,98 plov. lamín.
B21	zobčod se sprchou	3,46 keram. dlaž.
B22	obloží	12,50 plov. lamín.
B23	kojcovna	2,86 keram. dlaž.
B24	ložnice	16,13 plov. lamín.
B25	obloží	14,81 plov. lamín.
B26	terasa	18,82 dřev. rošt