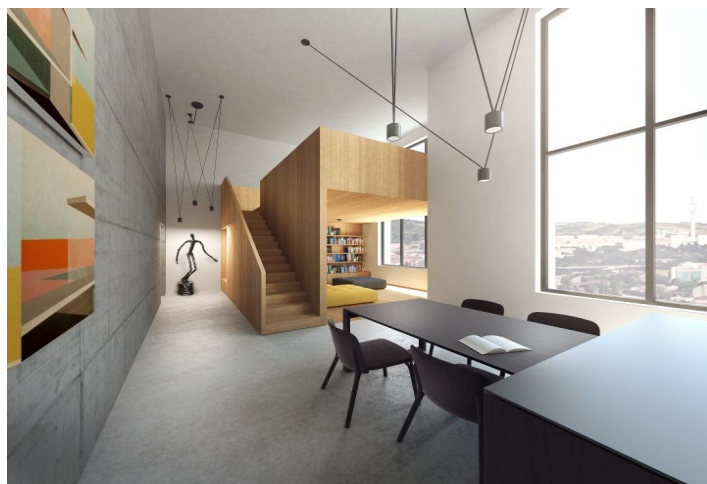
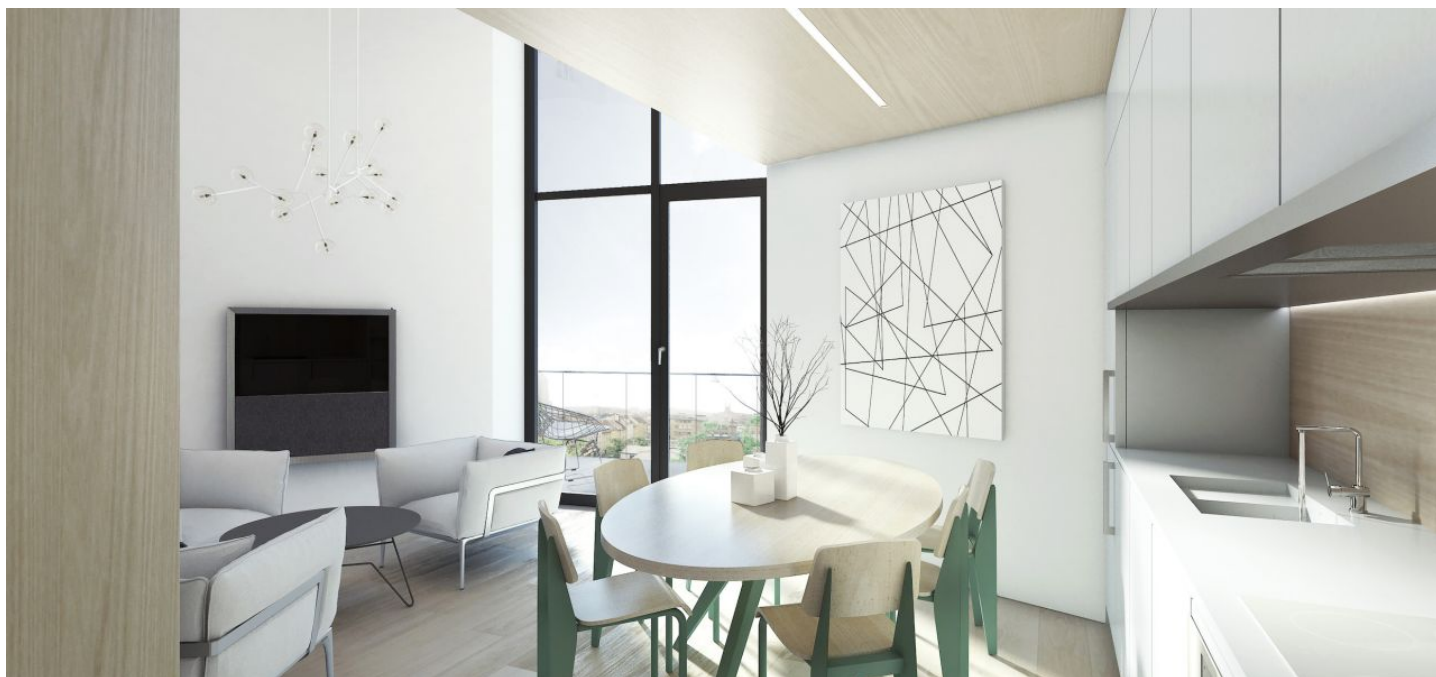




Apartment Three-bedroom (4+kk)

Sold

87 m², Brno, Brno - střed, Mlýnská





Apartment Three-bedroom (4+kk)

Sold87 m², Brno, Brno - střed, Mlýnská

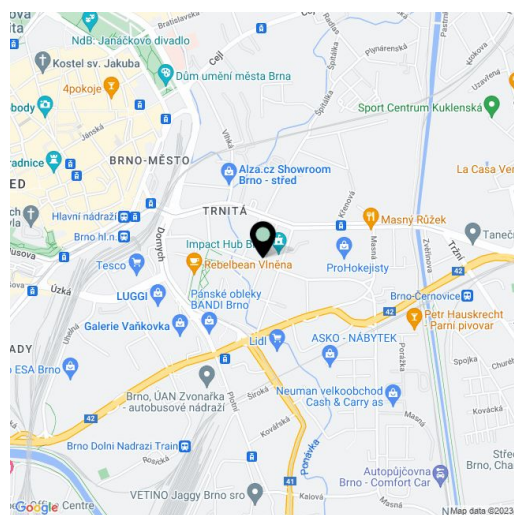
Total area	91 m ²
Floor area*	87 m ²
Balcony	4 m ²
Parking	-
Cellar	Yes
PENB	B
Reference number	22726

Modern 3-bedroom loft-style apartment with balcony, part of the newly emerging Milhouse project, featuring 14 flats and 2 commercial units. The building, designed by Chybik+Kristof Architects & Urban Designers, will offer large glazed areas providing plenty of light and views of the city's landmarks, quality equipment, and sophisticated aesthetic and functional elements. There will also be balconies and terraces, low-cost design and distinctive architecture, all together with convenient transport links and proximity to the center. Completion is scheduled for August 2018.

The lower level of this 3rd floor flat will consist of a living room with kitchen and balcony, bedroom, bathroom with bathtub and toilet, and an entry hall. The upper level is variable, depending on the needs of the new owner: it can feature either 1 bedroom and a gallery (preserving the double-height of the ceiling in the living room), or 2 bedrooms and hall with built-in wardrobe (using the original double-height of the ceiling in living room). The apartment will be equipped with floating floors and tiles, **large-format aluminum windows** with textile roller blinds, CPL doors with lined frames, heat exchanger stations and radiators / convectors. A **cellar** is included in the purchase price.

The project will be located near the center, thus providing many benefits of urban living. Vaňkovka and Letmo shopping malls are located within walking distance, while the main train and bus stations, business zones (CTZone Škrobárenská, CTPark Černovice / Slatina, Modřice Business Park), and connection to the main roads are also nearby. Residents can enjoy the **proximity of a bicycle path** that runs along the nearby Svitava River and an entirely **new park**, which will emerge right in front of the project. Easy parking provided by a large, **free parking lot** on the opposite side of the street.

Interior 86.6 / 69.1 m², balcony 3.9 m², cellar.



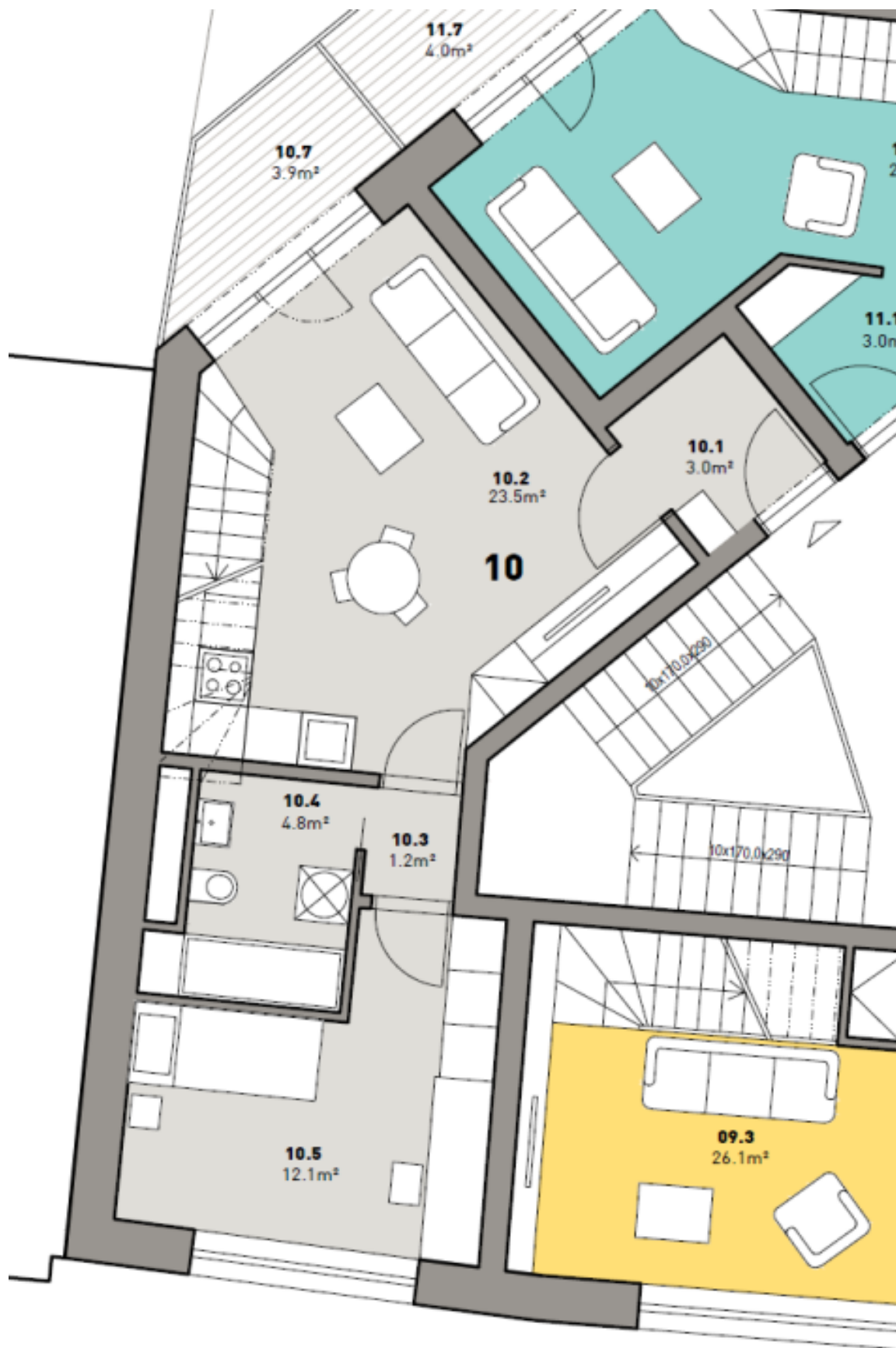
* Area of the unit according to the Civil Code. The area consists of the sum total area of the entire unit bounded by perimeter walls.



Apartment Three-bedroom (4+kk)

87 m², Brno, Brno - střed, Mlýnská

Sold

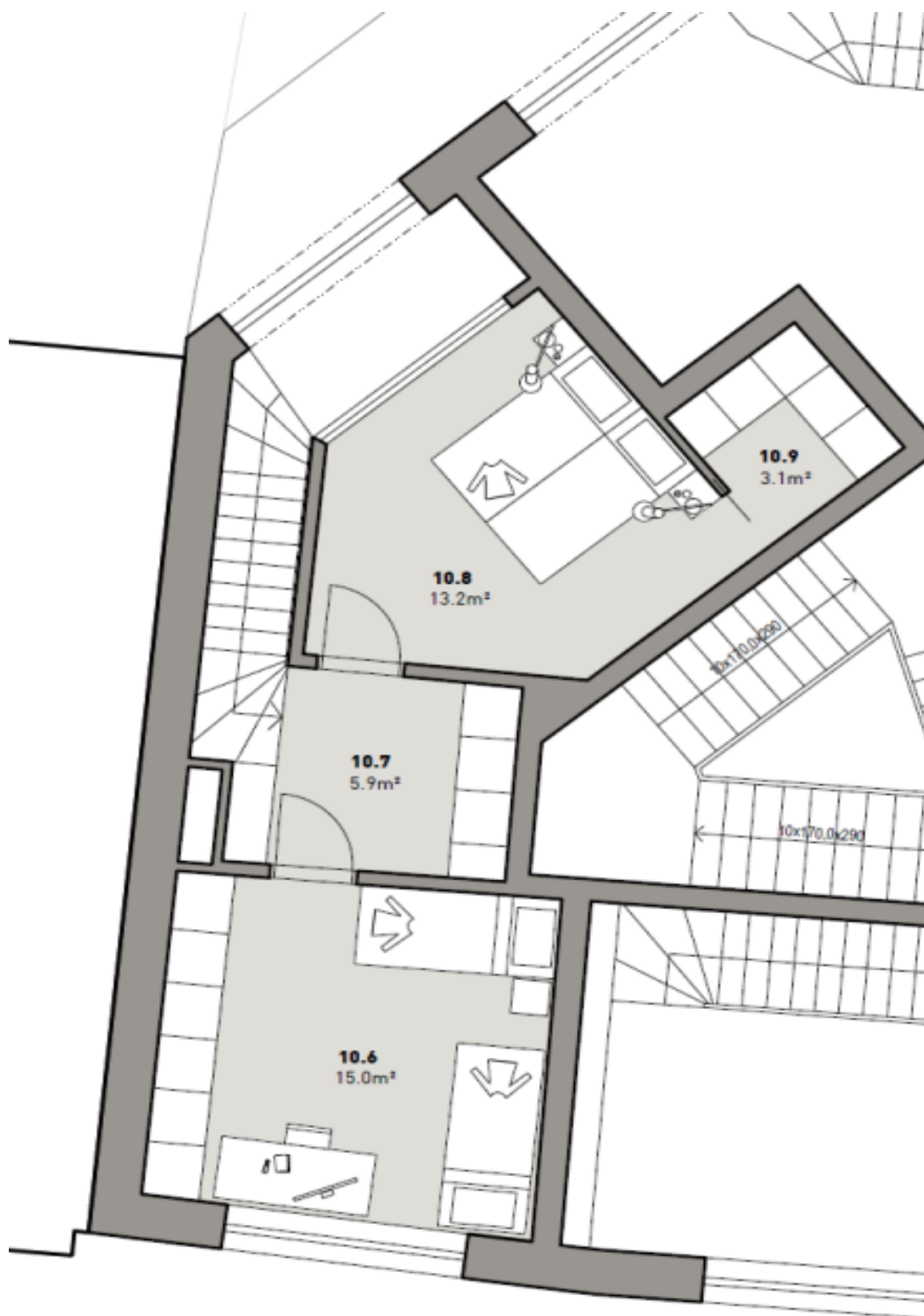




Apartment Three-bedroom (4+kk)

87 m², Brno, Brno - střed, Mlýnská

Sold





Apartment Three-bedroom (4+kk)

87 m², Brno, Brno - střed, Mlýnská

Sold

