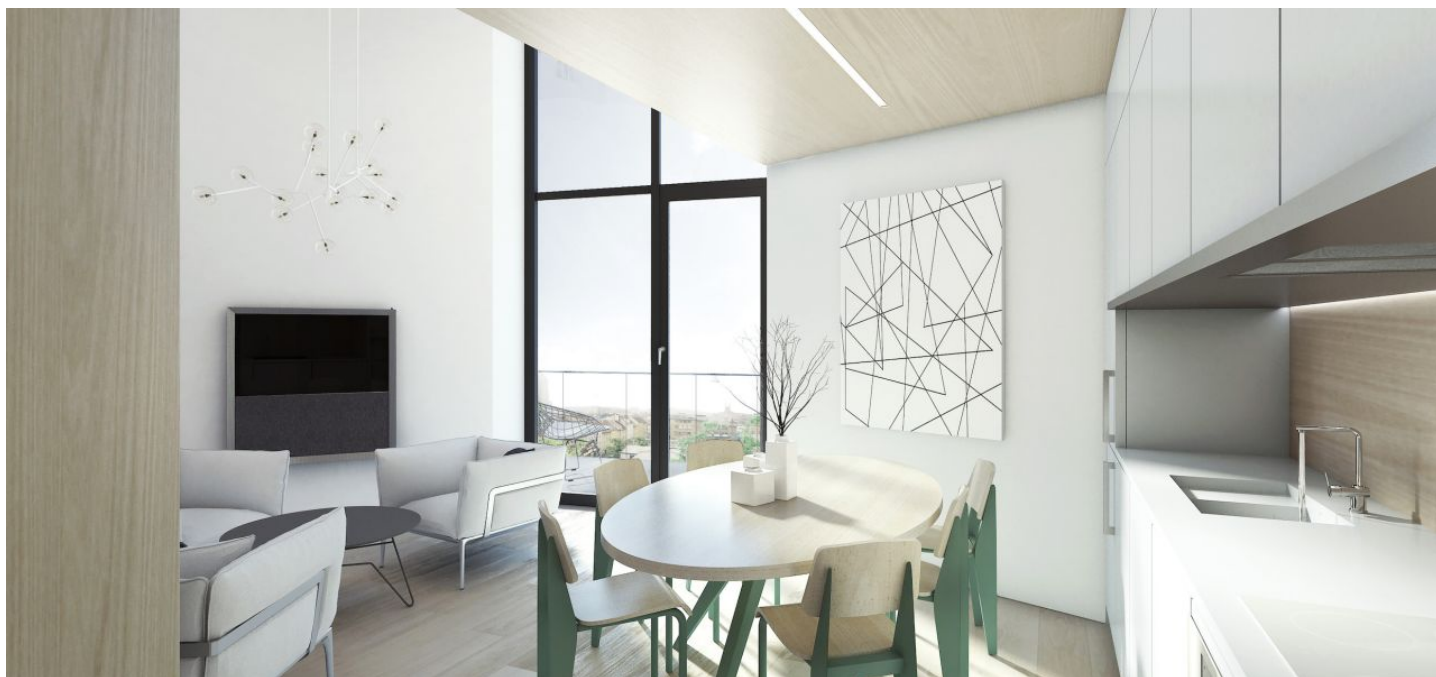




Apartment One-bedroom (2+kk)

Sold

59 m², Brno, Brno - střed, Mlýnská





Apartment One-bedroom (2+kk)

Sold59 m², Brno, Brno - střed, Mlýnská

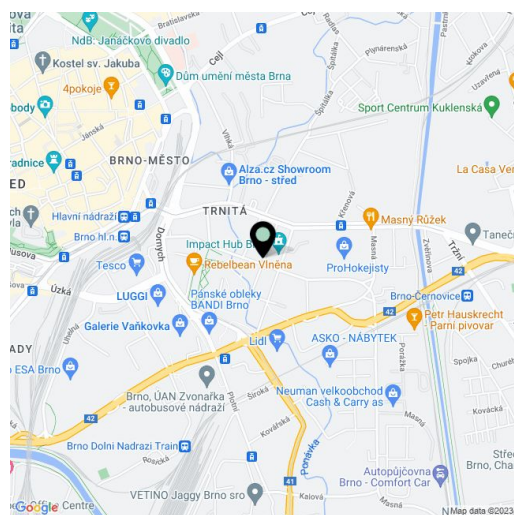
Total area	69 m ²
Floor area*	59 m ²
Terrace	10 m ²
Parking	-
Cellar	Yes
PENB	B
Reference number	22727

Modern 2-bedroom loft-style apartment with a terrace, part of the newly emerging Milhouse project, featuring 14 flats and 2 commercial units. The building, designed by Chybič+Kristof Architects & Urban Designers, will offer large glazed areas providing plenty of light and views of the city's landmarks, quality equipment, and sophisticated aesthetic and functional elements. There will also be balconies and terraces, low-cost design and distinctive architecture, all together with convenient transport links and proximity to the center. Completion is scheduled for August 2018.

The lower level of this 4th floor, **south-west oriented** flat will consist of a living room with kitchen, dining area and terrace, bathroom with shower and toilet, and an entry hall. The upper level will comprise a bedroom. The apartment will be equipped with floating floors and tiles, **large-format aluminum windows** with textile roller blinds, CPL doors with lined frames, heat exchanger stations and radiators / convectors. **Cellar** is included in the purchase price.

The project will be located near the center, thus providing many benefits of urban living. Vaňkovka and Letmo shopping malls are located within walking distance, while the main train and bus stations, business zones (CTZone Škrobárenská, CTPark Černovice / Slatina, Modřice Business Park), and connection to the main roads are also nearby. Residents can enjoy the **proximity of a bicycle path** that runs along the nearby Svitava River and an entirely **new park**, which will emerge right in front of the project. Easy parking provided by a large, **free parking lot** on the opposite side of the street.

Interior 59 m², terrace 10.2 m², cellar.



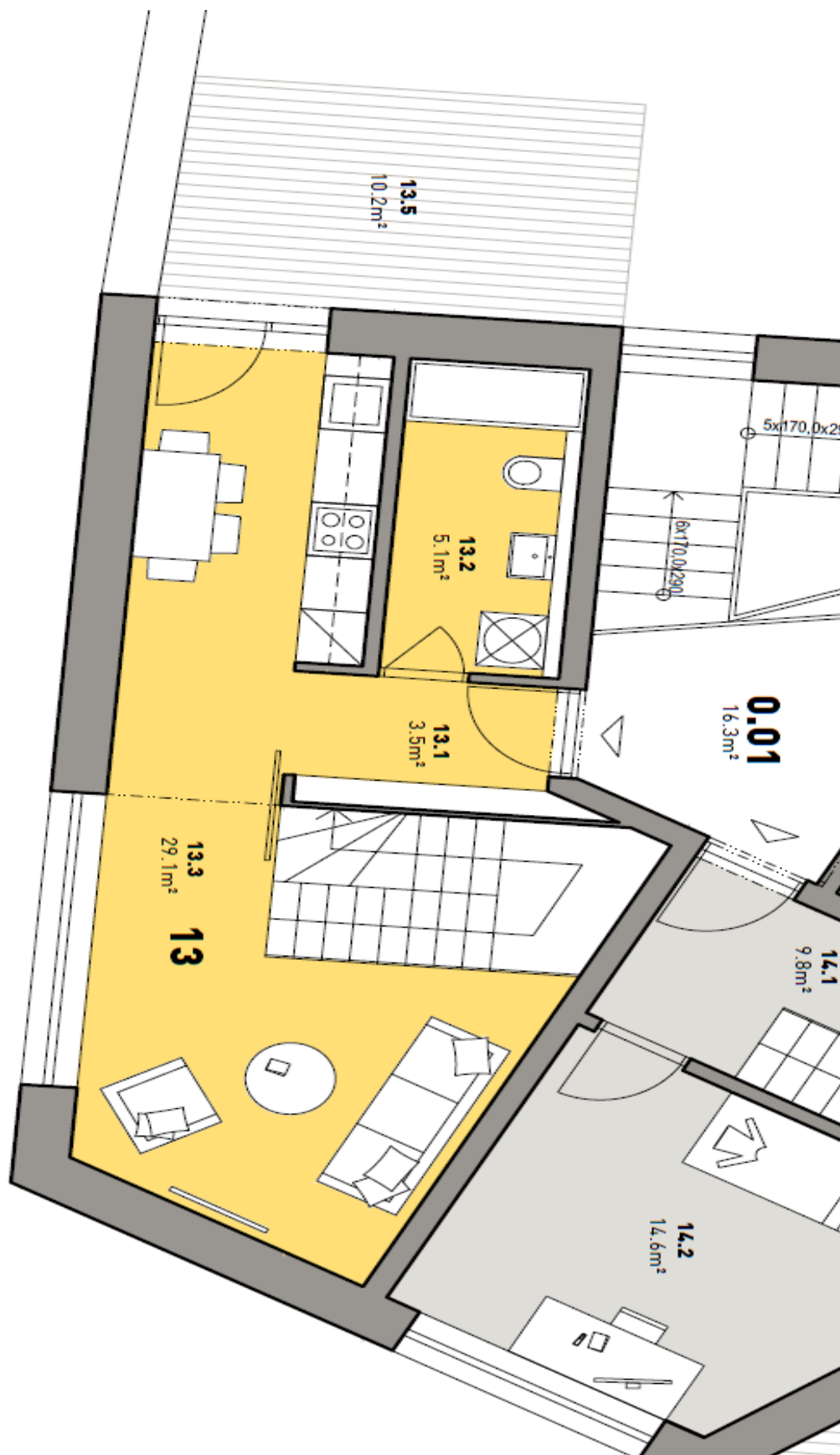
* Area of the unit according to the Civil Code. The area consists of the sum total area of the entire unit bounded by perimeter walls.



Apartment One-bedroom (2+kk)

59 m², Brno, Brno - střed, Mlýnská

Sold





Apartment One-bedroom (2+kk)

Sold

59 m², Brno, Brno - střed, Mlýnská

