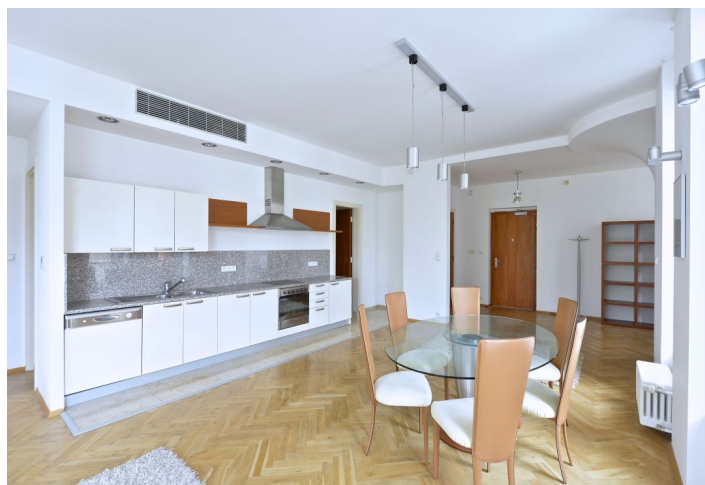




Apartment One-bedroom (2+kk)

Rented

122 m², Prague 6, Bubeneč, Rooseveltova





Apartment One-bedroom (2+kk)

Rented

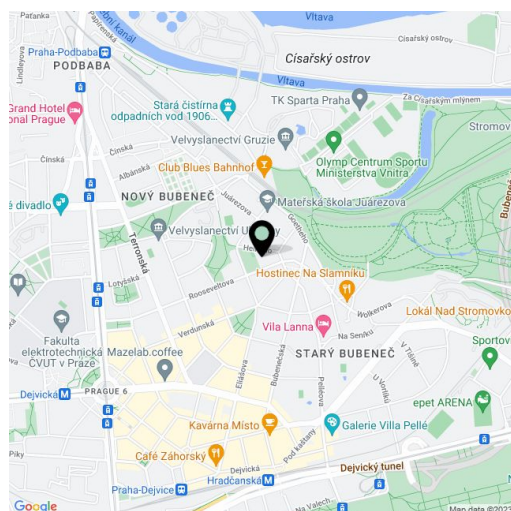
122 m², Prague 6, Bubeneč, Rooseveltova

Total area	127 m ²
Floor area*	122 m ²
Balcony	5 m ²
Parking	Garage parking.
Garage	Yes
Cellar	Yes
PENB	G
Reference number	22768
Available from	Immediately

Bright fully furnished 1-bedroom flat with a balcony, on the second floor of a modern residence with superior services and underground parking. Situated in the quiet green residential area of Bubeneč, Prague 6, on the edge of Willy Brandt Park. Quiet location, convenient to public transportation, distance from the city center eight minutes, and from the airport 15 minutes by car.

The flat which features **high quality furniture** boasts a spacious main living room with a fully equipped kitchen and a **nook for a desk or garden room**, and a large bedroom with a balcony overlooking full-grown vegetation. The full bathroom features a corner bathtub, double sink, toilet and bidet. A walk-in closet and laundry room complete the space; there is a cellar in the basement.

The building has a **large swimming pool, gym, sauna, reception and a private garden**, and is also equipped with air-conditioning, central trash chute and structured cabling. Solid wood parquet floors, large windows, dishwasher, alarm. One garage parking space included, one more is available at CZK 3000 per month. Common building charges and deposit for utilities CZK 9000 per month. Electricity is billed separately.



* Area of the unit according to the Civil Code. The area consists of the sum total area of the entire unit bounded by perimeter walls.



Apartment One-bedroom (2+kk)

Rented

122 m², Prague 6, Bubeneč, Rooseveltova

