



House Seven-bedroom (8+1)

Sold

364 m², Praha-východ, Velké Popovice, V Parku





House Seven-bedroom (8+1)

Sold364 m², Praha-východ, Velké Popovice, V Parku

Plot	1 670 m ²
Foot print	244 m ²
Garden	1 426 m ²
Parking	Garage for 2 cars
Garage	Yes
Cellar	Yes
PENB	C
Reference number	22798

Sale of an atypical family house, designed by architect Milan Ruso, boasting a fireplace and large garden with mature greenery. The house is located on a very quiet street in a residential area of Velké Popovice - Brtnice, in the vicinity of an alley of flowering cherry trees, Daleška Park and several ponds.

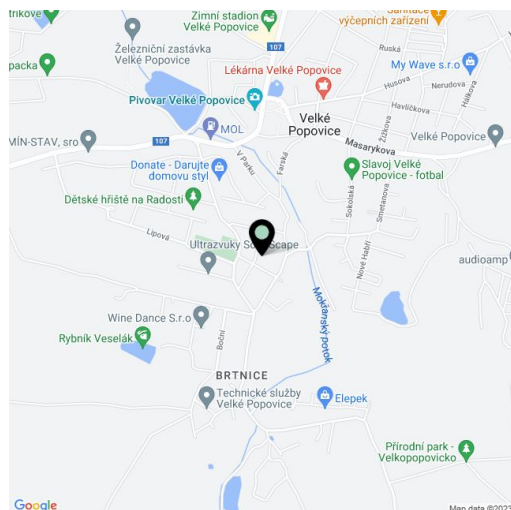
The ground floor of this octagonal house with a central staircase consists of a living room with dining room, a kitchen with pantry, bedroom, bathroom with toilet, hall and facilities - boiler room, workshop (with cellar) and a garage. The living room and kitchen are walkthrough to the garden. On the first floor you can find 5 bedrooms, 2 dressing rooms, 2 bathrooms, 2 separate toilets, and a gallery. The second floor is used as a hobby room. The only room in this attractive house that features a classic regular shape is the kitchen. The flat roof compliments the unique shape of the house.

Equipped with **wooden parquet flooring**, floating floors and ceramic tiles, plastic windows, fireplace, Vaillant gas boiler, private well. **Garage for 2 cars**, additional parking spaces on the plot. The garden has an automatic irrigation system.

There are basic civic amenities in the village - kindergarten, school, Sokol club with tennis courts, playgrounds, shop, pharmacy, post office, restaurant. The house is located just a 10-minute walk from a bus stop. 30 minutes by car to the center of Prague.

The price does not include 4% property transfer tax.

Interior 364 m², built-up area 244 m², garden 1 426 m², a total of 1 670 m².

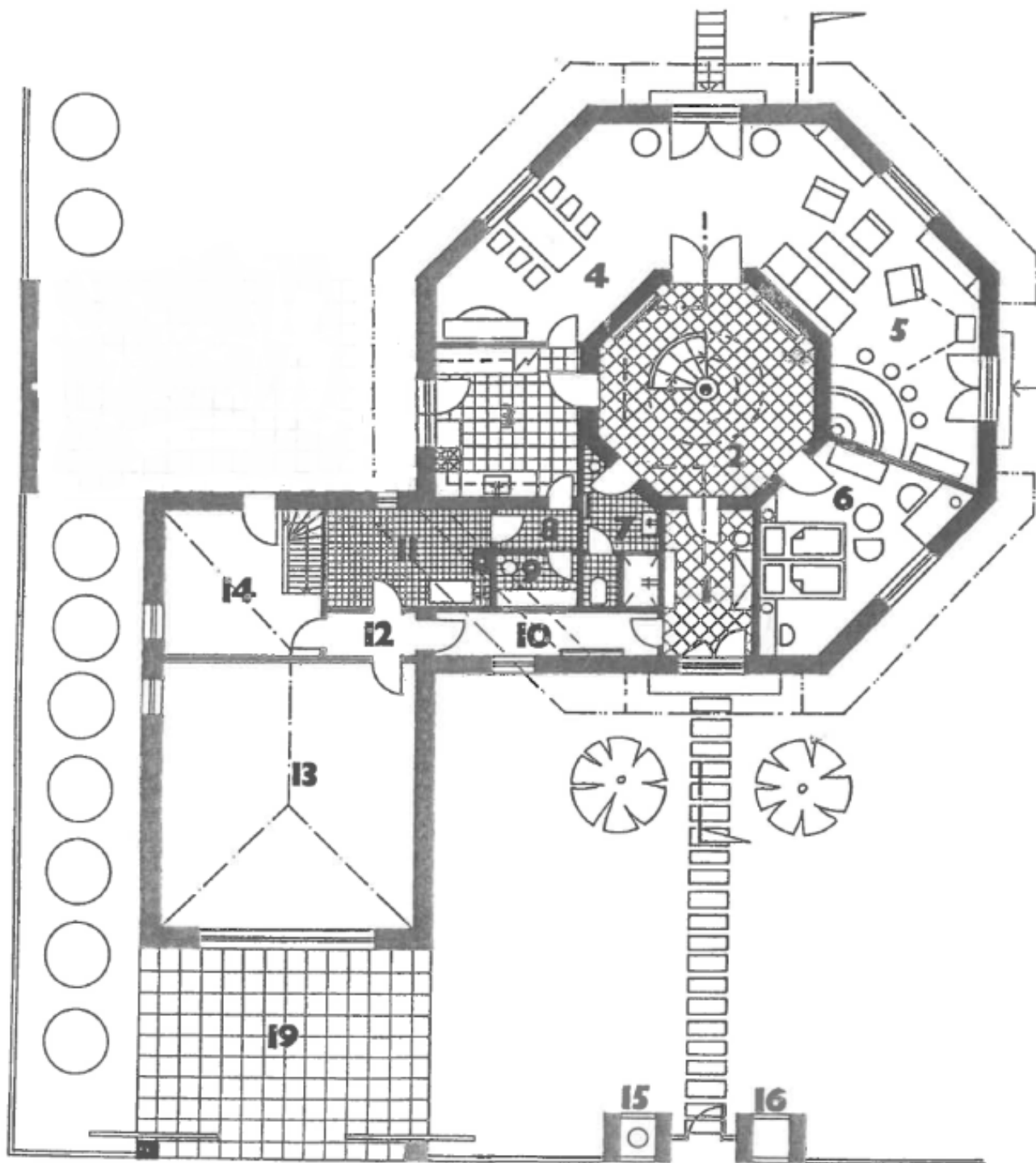




House Seven-bedroom (8+1)

364 m², Praha-východ, Velké Popovice, V Parku

Sold

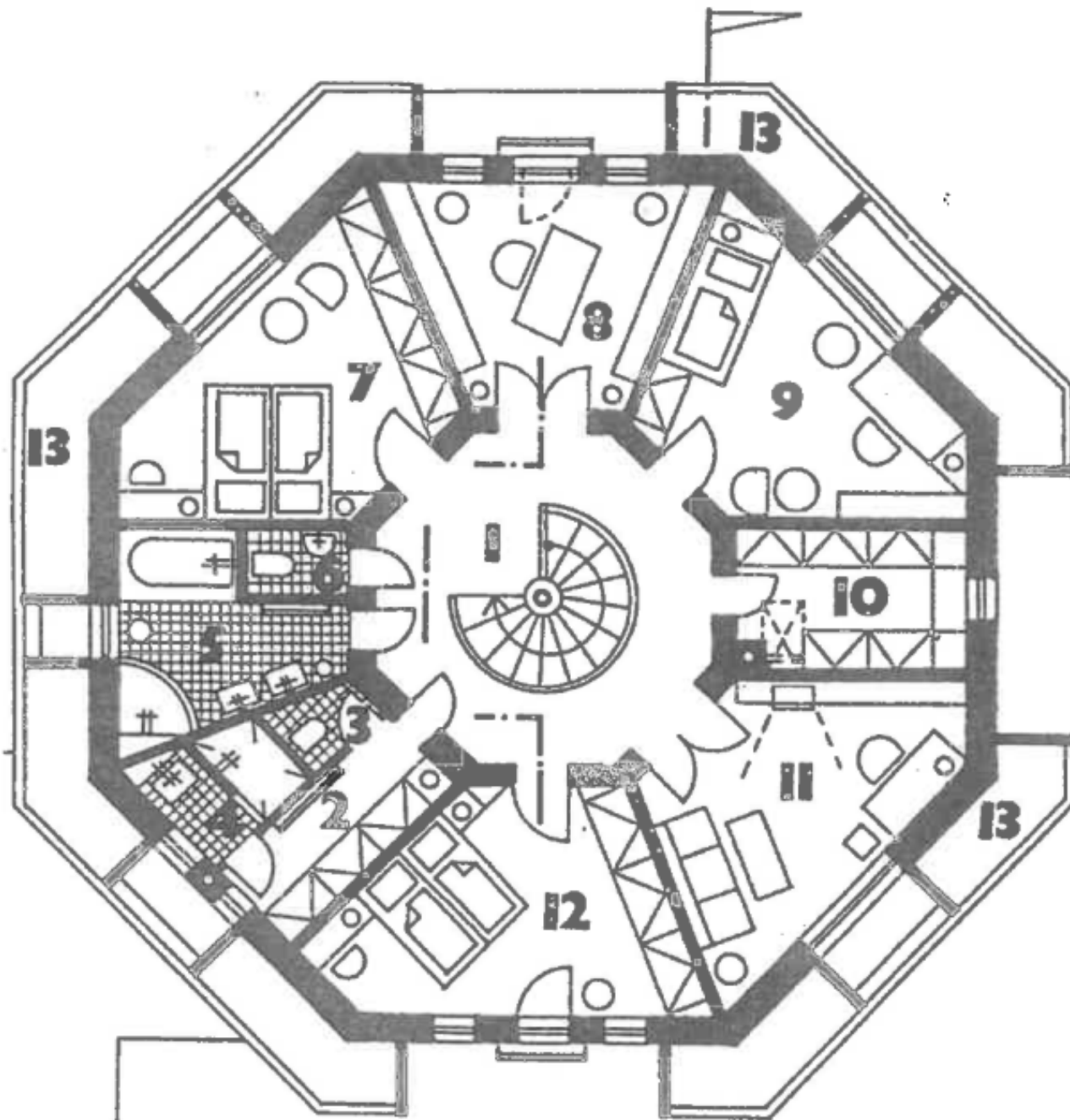




House Seven-bedroom (8+1)

364 m², Praha-východ, Velké Popovice, V Parku

Sold





House Seven-bedroom (8+1)

364 m², Praha-východ, Velké Popovice, V Parku

Sold

