



## Apartment One-bedroom (2+kk)

Rented

62 m<sup>2</sup>, Prague 1, Nové Město, Příčná





## Apartment One-bedroom (2+kk)

Rented

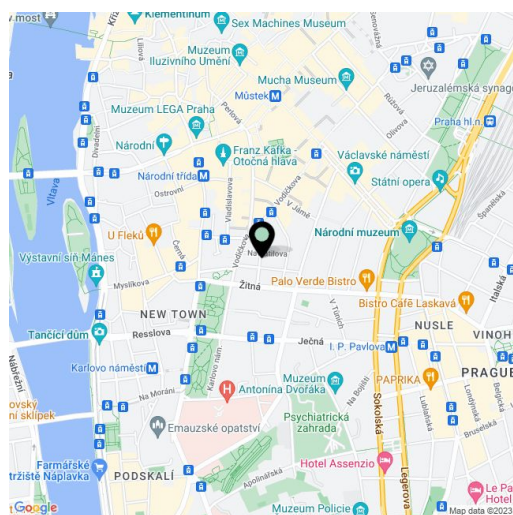
62 m<sup>2</sup>, Prague 1, Nové Město, Příčná

Total area	62 m <sup>2</sup>
Parking	Garage parking is available.
Garage	Yes
Cellar	Yes
PENB	G
Reference number	22808
Available from	Immediately

Fully furnished, fully air-conditioned 1-bedroom apartment designed by the renown Czech architectural studio de.facto. Set on the 4th floor of a completely renovated Functionalist building with a lift, garage parking and security cameras. Renovated to a high standard with emphasis put on detail, preserving original features and quality materials, the building is located in the city center, near the Novoměstská radnice (the Town Hall), just a 3 min. walk from the metro and tram stops at Karlovo náměstí Square and 7 min. from the Můstek metro station at Wenceslas Square, with full amenities within immediate reach.

The interior features a living room with a fully fitted open plan kitchen, a bedroom with built-in wardrobes, a bathroom with a bathtub, a bidet and a toilet, and an entrance hall with storage.

High standard equipment and finishes, Italian marble in the bathroom, oak floors, security entry door, high-end sanitary ware, washer / dryer, dishwasher, induction cooktop, iron and ironing board, kitchenware, two TV sets, video entry phone, cellar. The apartment is facing the quiet street. One on-site **garage parking** space is included. Monthly deposit for service charges, utilities and the Internet fee is CZK 5000.



\* Area of the unit according to the Civil Code. The area consists of the sum total area of the entire unit bounded by perimeter walls.



## Apartment One-bedroom (2+kk)

62 m<sup>2</sup>, Prague 1, Nové Město, Příčná

Rented

### VITRAGE HOUSE

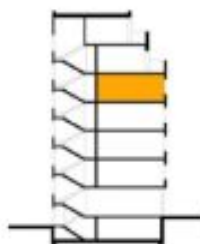
BYT 5.15 2+KK



#### LEGENDA MÍSTNOSTÍ

01	CHODBA	6,10 m <sup>2</sup>
02	OBÝVACÍ POKOJ, KK	32,55 m <sup>2</sup>
03	LOŽNICE	17,85 m <sup>2</sup>
04	KOUPELNA	7,30 m <sup>2</sup>

UŽITNÁ PLOCHA BYTU 63,80 m<sup>2</sup>





## Apartment One-bedroom (2+kk)

62 m<sup>2</sup>, Prague 1, Nové Město, Příčná

Rented

SNP - BYT 5.15

