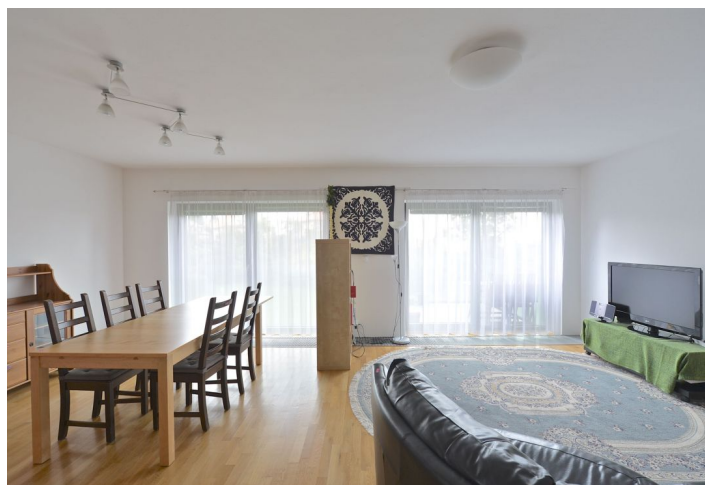
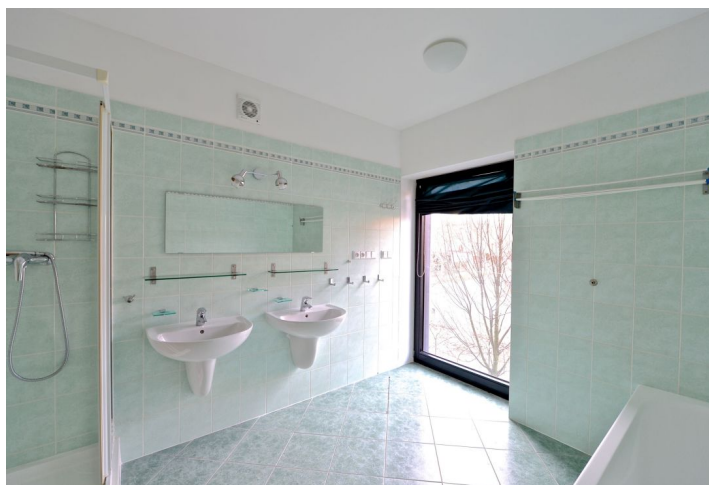




Apartment Three-bedroom (4+kk)

Rented

124 m², Prague 6, Vokovice, Nobelova





Apartment Three-bedroom (4+kk)

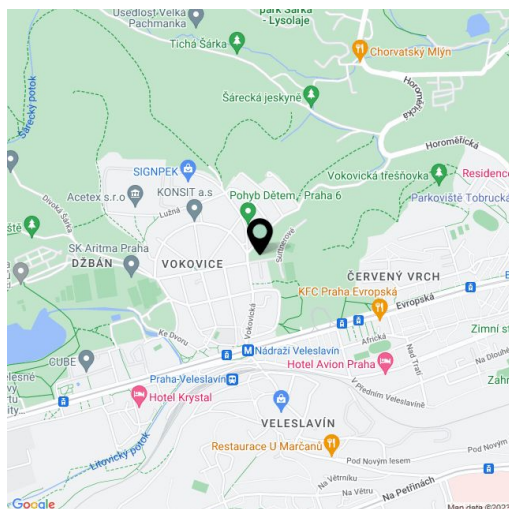
Rented124 m², Prague 6, Vokovice, Nobelova

Total area	130 m ²
Floor area*	124 m ²
Balcony	6 m ²
Parking	One parking space included.
Garage	Yes
Cellar	Yes
PENB	G
Reference number	22855
Available from	Immediately

Modern furnished 3-bedroom 2-bathroom flat with a 6 m² balcony on the first floor in the recently built development Na Krutci, designed by Kuba & Pilař architectural studio, with 24-hour reception and security, sports center and tennis court. Convenient to the airport and international schools in Prague 6, with quick connections to the city center, close to Šárka protected natural preserve. Full amenities in the area, five min. to Nádraží Veleslavín tram stops and metro station.

The interior includes a living room with a fully fitted open kitchen and balcony facing the surrounding greenery, 3 separate bedrooms with built-in wardrobes (one of them has an en-suite bathroom with shower, sink and toilet), second bathroom (bath tub, double sink, toilet and bidet), guest toilet with utility area, and entry hall with built-in wardrobes.

Wooden floors, large French windows, plenty of storage space, security entry door, blinds, washer, dishwasher, microwave oven, TV, video entry phone, basement storage unit, lift. One garage parking space and basement storage included. Common building charges and utilities CZK 7,500/month. Available from March, 2018.



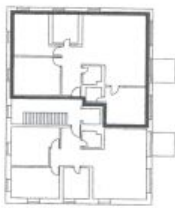
* Area of the unit according to the Civil Code. The area consists of the sum total area of the entire unit bounded by perimeter walls.



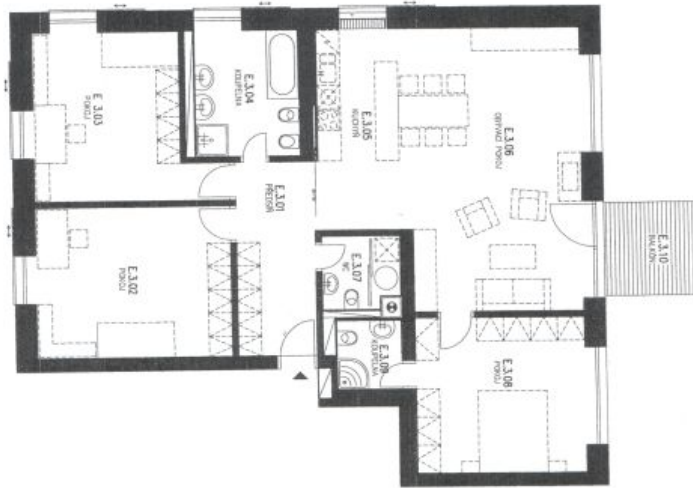
Apartment Three-bedroom (4+kk)

Rented

124 m², Prague 6, Vokovice, Nobelova



Nábytkové zařízení včetně vestavěných skříní, vybavení kuchyně je pouze ilustrativní a není součástí dodávky.



10 m
měřítko 1 : 100



OZN.	MÍSTNOST	m ²
E.3.01	průchod	10,06
E.3.02	pokoj	19,61
E.3.03	pokoj	16,17
E.3.04	koupelna	6,67
E.3.05	kuchyně	7,06
E.3.06	obývací pokoj	37,72
E.3.07	WC + kotel	3,70
E.3.08	pokoj	17,74
E.3.09	koupelna	2,99
E.3.10	balkón	123,72
celková plocha bytů		5,76
celková plocha balkónů		5,76