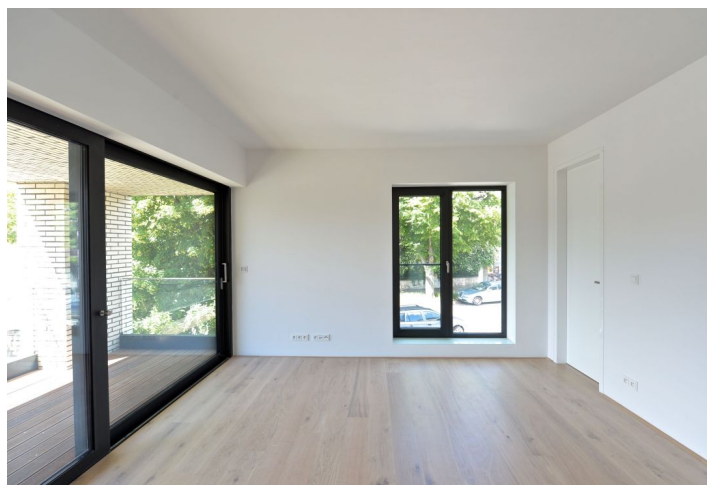
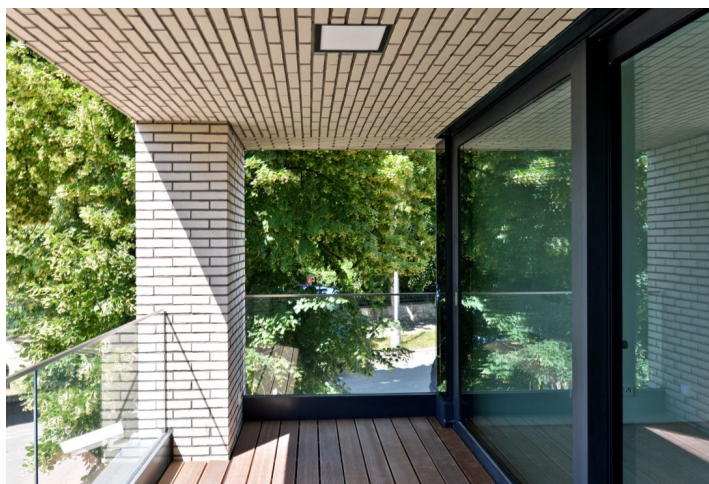




Apartment Three-bedroom (4+kk)

Rented

175 m², Praha 6, Střešovice, U Laboratoře





Apartment Three-bedroom (4+kk)

Rented175 m², Praha 6, Střešovice, U Laboratoře

Total area	191 m ²
Floor area*	175 m ²
Terrace	16 m ²
Parking	On-site garage parking.
Garage	Yes
Cellar	Yes
PENB	B
Reference number	22893
Available from	Immediately

Top quality second floor 3-bedroom 2-bathroom flat with two terraces, situated in the exclusive Royal Triangle project designed by the renowned Schindler Seko architectural studio. Offering unique views of the Petřín Hill, the Prague Castle and an adjacent green park, the project is located in the prestigious Střešovice residential area, on the edge of the attractive Ořechovka neighborhood, just a short walk from the Prague Castle. Excellent transportation connections, quick access to the city center and full amenities, convenient to the airport and international schools, a few minutes to Dejvická and Hradčanská metro. Building amenities include a reception, common courtyard garden and underground parking.

The interior features a comfortable living room with a fully fitted open plan kitchen and dining area, three bedrooms, two bathrooms, walk-in closet, utility room, guest toilet, and entry hall.

High quality materials, oak floors, tropical wood on the terrace, floor heating, built-in wardrobes, capillary cooling system in ceilings and ventilation with heat recovery, aluminum windows with triple glazing, alarm. Cellar, lift, camera system. One parking space included in the rent. Common building charges and deposit for utilities CZK 100/m²/month. Available from June 2020.



* Area of the unit according to the Civil Code. The area consists of the sum total area of the entire unit bounded by perimeter walls.



Apartment Three-bedroom (4+kk)

175 m², Praha 6, Střešovice, U Laboratoře

Rented



G.3.1

BUILDING G | 3RD FLOOR | 4+KK | 168 M²



01	VSTUPNÍ HAGA ENTRANCE HALL	13,32 m ²
02	OBYVACÍ POKOJ + KX LIVING ROOM	73,29 m ²
03	CHODBA HALLWAY	7,93 m ²
04	POKOJ ROOM	11,95 m ²
05	POKOJ ROOM	14,5 m ²
06	LOŽNICE BEDROOM	18,35 m ²
07	SALNA CLOSET	5,99 m ²
08	KOUPELNA BATHROOM	6,93 m ²
09	KOUPELNA BATHROOM	9,7 m ²
10	TECH. MÍSTNOST TECHNICAL ROOM	3,01 m ²
11	WC	3,03 m ²
DEPNÁ PLOCHA LIVING SPACE		168,00 m²
22	LOŽNICE LOGGIA	8,04 m ²
23	LOŽNICE LOGGIA	8,29 m ²
SÍLA	SKUP CELLAR	5,65 m ²
CELKEM TOTAL		192,12 m²

