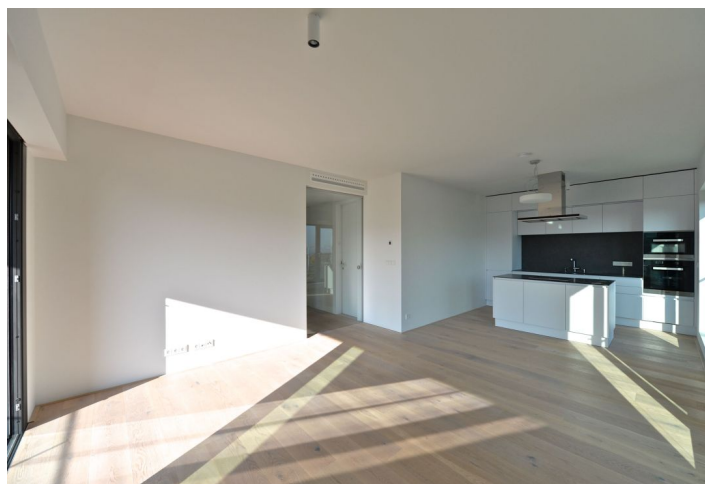
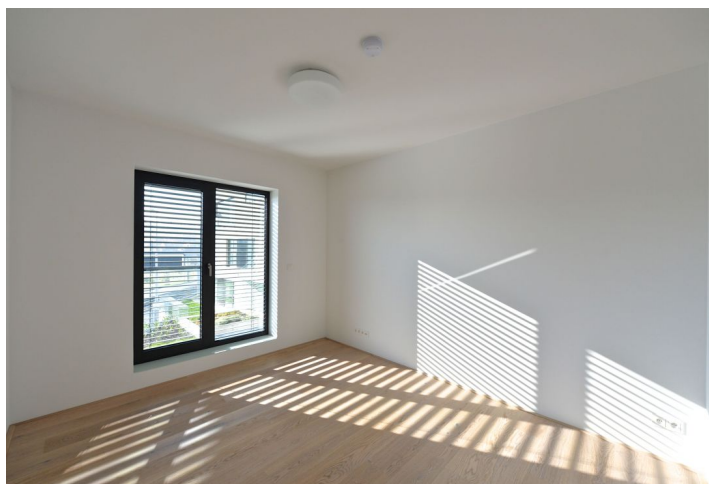




Apartment Two-bedroom (3+kk)

Rented

89 m², Praha 6, Střešovice, U Laboratoře





Apartment Two-bedroom (3+kk)

Rented89 m², Praha 6, Střešovice, U Laboratoře

Total area	96 m ²
Floor area*	89 m ²
Terrace	7 m ²
Parking	On-site garage parking.
Garage	Yes
Cellar	Yes
PENB	B
Reference number	22909
Available from	Immediately

Top quality first floor 2-bedroom 2-bathroom flat with a terrace and wonderful views, situated in the exclusive Royal Triangle project designed by the renowned Schindler Seko architectural studio. Offering unique views of the Petřín Hill, the Prague Castle and an adjacent green park, the project is located in the prestigious Střešovice residential area, on the edge of the attractive Ořechovka neighborhood, just a short walk from the Prague Castle. Excellent transportation connections, quick access to the city center and full amenities, convenient to the airport and international schools, a few minutes to Dejvická and Hradčanská metro. Building amenities include a reception, common courtyard garden and underground parking.

The interior features a comfortable living room with a fully fitted open plan kitchen and dining area, two bedrooms, two bathrooms, and entry hall. The terrace is accessible from the living room and one bedroom.

High quality materials, oak floors, tropical wood on the terrace, floor heating, built-in wardrobes, capillary cooling system in ceilings and ventilation with heat recovery, aluminum windows with triple glazing, Miele kitchen appliances, video entry phone, alarm. Cellar, lift, camera system. One parking space in the underground garage is included in the rent. Common building charges and deposit for utilities CZK 100/m²/month. Electricity is billed separately.



* Area of the unit according to the Civil Code. The area consists of the sum total area of the entire unit bounded by perimeter walls.

