



Apartment Three-bedroom (4+kk)

Rented

102 m², Prague 6, Střešovice, U Laboratoře





Apartment Three-bedroom (4+kk)

Rented102 m², Prague 6, Střešovice, U Laboratoře

Total area	110 m ²
Floor area*	102 m ²
Terrace	8 m ²
Parking	On-site garage parking.
Garage	Yes
Cellar	Yes
PENB	B
Reference number	22921
Available from	Immediately

Top quality second floor 3-bedroom 2-bathroom flat with a terrace and wonderful views, situated in the exclusive Royal Triangle project designed by the renowned Schindler Seko architectural studio. Offering unique views of the Petřín Hill, the Prague Castle and an adjacent green park, the project is located in the prestigious Střešovice residential area, on the edge of the attractive Ořechovka neighborhood, just a short walk from the Prague Castle. Excellent transportation connections, quick access to the city center and full amenities, convenient to the airport and international schools, a few minutes to Dejvická and Hradčanská metro. Building amenities include a reception, common courtyard garden and underground parking.

The interior features a comfortable living room with a fully fitted open plan kitchen and dining area, three bedrooms, two bathrooms, and entry hall.

High quality materials, oak floors, tropical wood on the terrace, floor heating, built-in wardrobes, capillary cooling system in ceilings and ventilation with heat recovery, aluminum windows with triple glazing, alarm. Cellar, lift, camera system. Two parking spaces in the underground garage included. Common building charges and deposit for utilities CZK 100/m² /month. Electricity will be transferred to the tenant. Photos are taken from a similar apartment.



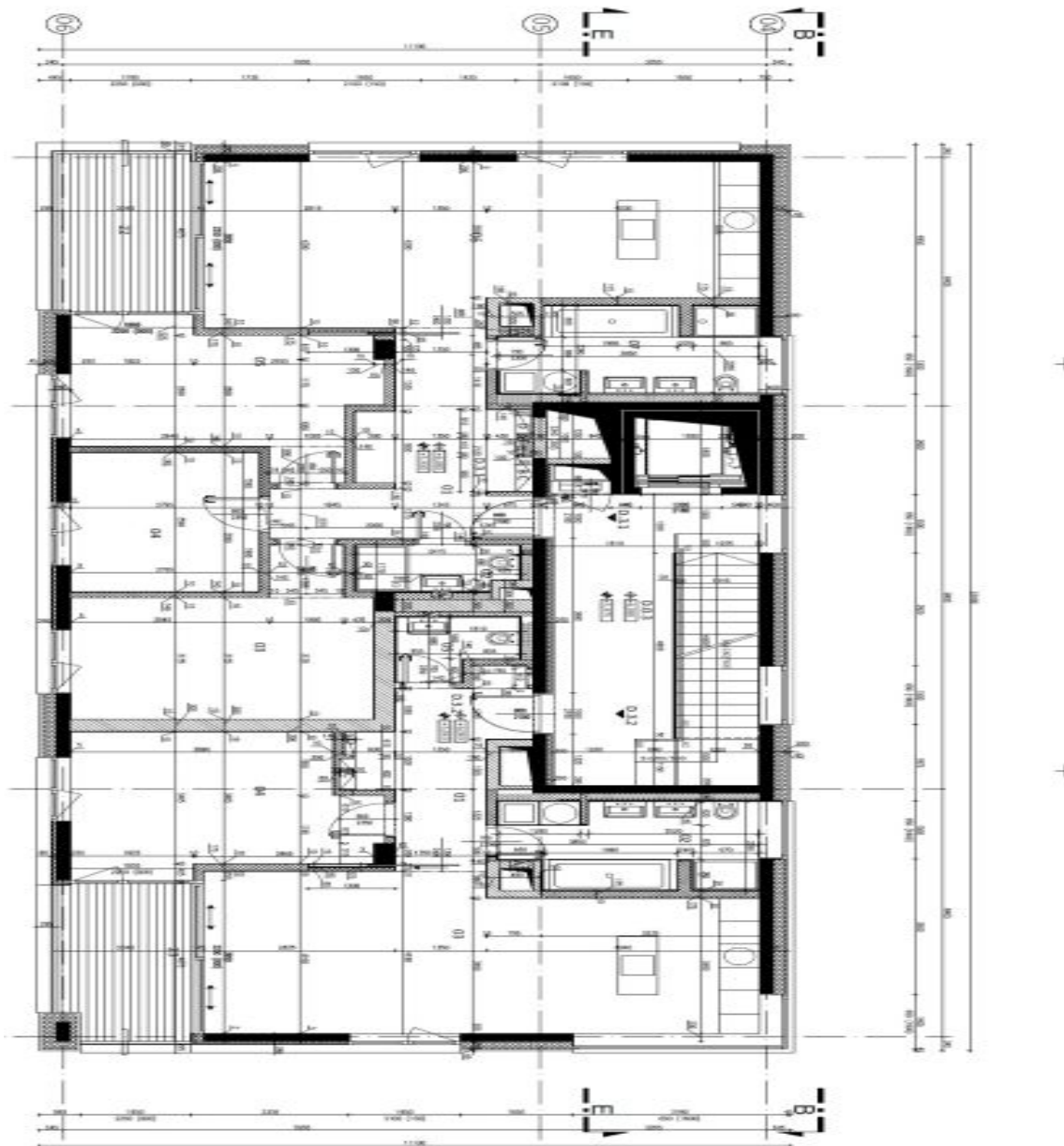
* Area of the unit according to the Civil Code. The area consists of the sum total area of the entire unit bounded by perimeter walls.



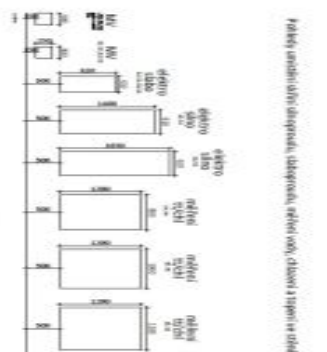
Apartment Three-bedroom (4+kk)

102 m², Prague 6, Střešovice, U Laboratoře

Rented



MĚŘENÍ		MĚŘENÍ		MĚŘENÍ	
Číslo	Název	Číslo	Název	Číslo	Název
01	Obývací pokoj	02	Kuchyň	03	Ložnice
04	Ložnice	05	Ložnice	06	Koupelna
07	WC	08	WC	09	WC
10	WC	11	WC	12	WC
13	WC	14	WC	15	WC
16	WC	17	WC	18	WC
19	WC	20	WC	21	WC
22	WC	23	WC	24	WC
25	WC	26	WC	27	WC
28	WC	29	WC	30	WC
31	WC	32	WC	33	WC
34	WC	35	WC	36	WC
37	WC	38	WC	39	WC
40	WC	41	WC	42	WC
43	WC	44	WC	45	WC
46	WC	47	WC	48	WC
49	WC	50	WC	51	WC
52	WC	53	WC	54	WC
55	WC	56	WC	57	WC
58	WC	59	WC	60	WC
61	WC	62	WC	63	WC
64	WC	65	WC	66	WC
67	WC	68	WC	69	WC
70	WC	71	WC	72	WC
73	WC	74	WC	75	WC
76	WC	77	WC	78	WC
79	WC	80	WC	81	WC
82	WC	83	WC	84	WC
85	WC	86	WC	87	WC
88	WC	89	WC	90	WC
91	WC	92	WC	93	WC
94	WC	95	WC	96	WC
97	WC	98	WC	99	WC
100	WC	101	WC	102	WC



Podle vnitřního dispozice, ideálního, ideálního, ideálního, ideálního, ideálního a typů se chodí