



## Apartment Four-bedroom (5+kk)

Rented

266 m<sup>2</sup>, Prague 6, Střešovice, U Laboratoře





## Apartment Four-bedroom (5+kk)

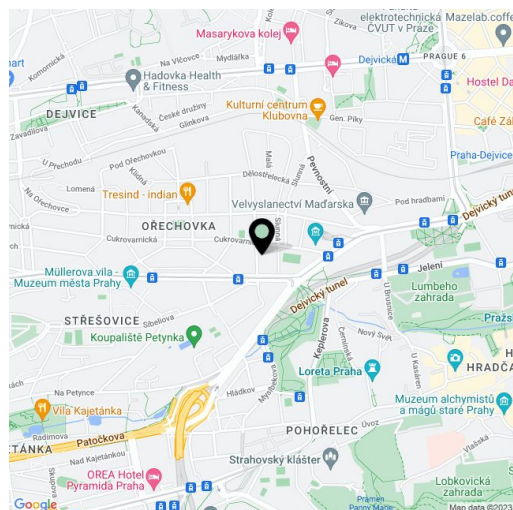
**Rented**266 m<sup>2</sup>, Prague 6, Střešovice, U Laboratoře

Total area	335 m <sup>2</sup>
Floor area*	266 m <sup>2</sup>
Terrace	69 m <sup>2</sup>
Garden	114 m <sup>2</sup>
Parking	On-site garage parking.
Garage	Yes
Cellar	Yes
PENB	B
Reference number	22924
Available from	Immediately

Brand new top quality flat offering wonderful views, situated in the exclusive Royal Triangle project designed by the renowned Schindler Seko architectural studio. This ground floor 4-bedroom 3-bathroom flat boasts a spacious terrace, garden and unique views of the Petřín Hill, the Prague Castle and an adjacent green park. Located in the prestigious Střešovice residential area, on the edge of the attractive Ořechovka neighborhood, just a short walk from the Prague Castle. Excellent transportation connections, quick access to the city center and full amenities, convenient to the airport and international schools, a few minutes to Dejvická and Hradčanská metro. Building amenities include a reception, common courtyard garden and underground parking.

The interior features a comfortable living room with a fully fitted open plan kitchen, four bedrooms, three bathrooms, walk-in closet, utility room, guest toilet, and entry hall. The terrace and garden are accessible from all main rooms.

High quality materials, oak floors, tropical wood on the terrace, floor heating, built-in wardrobes, capillary cooling system in ceilings and ventilation with heat recovery, aluminum windows with triple glazing, alarm. Cellar, lift, camera system. Two parking spaces in the underground garage at CZK 3000/space/month. Common building charges and deposit for utilities CZK 80/m<sup>2</sup>/month. Electricity is billed separately. Interior: 165 m<sup>2</sup>. Terrace: 69 m<sup>2</sup>. Garden: 114 m<sup>2</sup>.



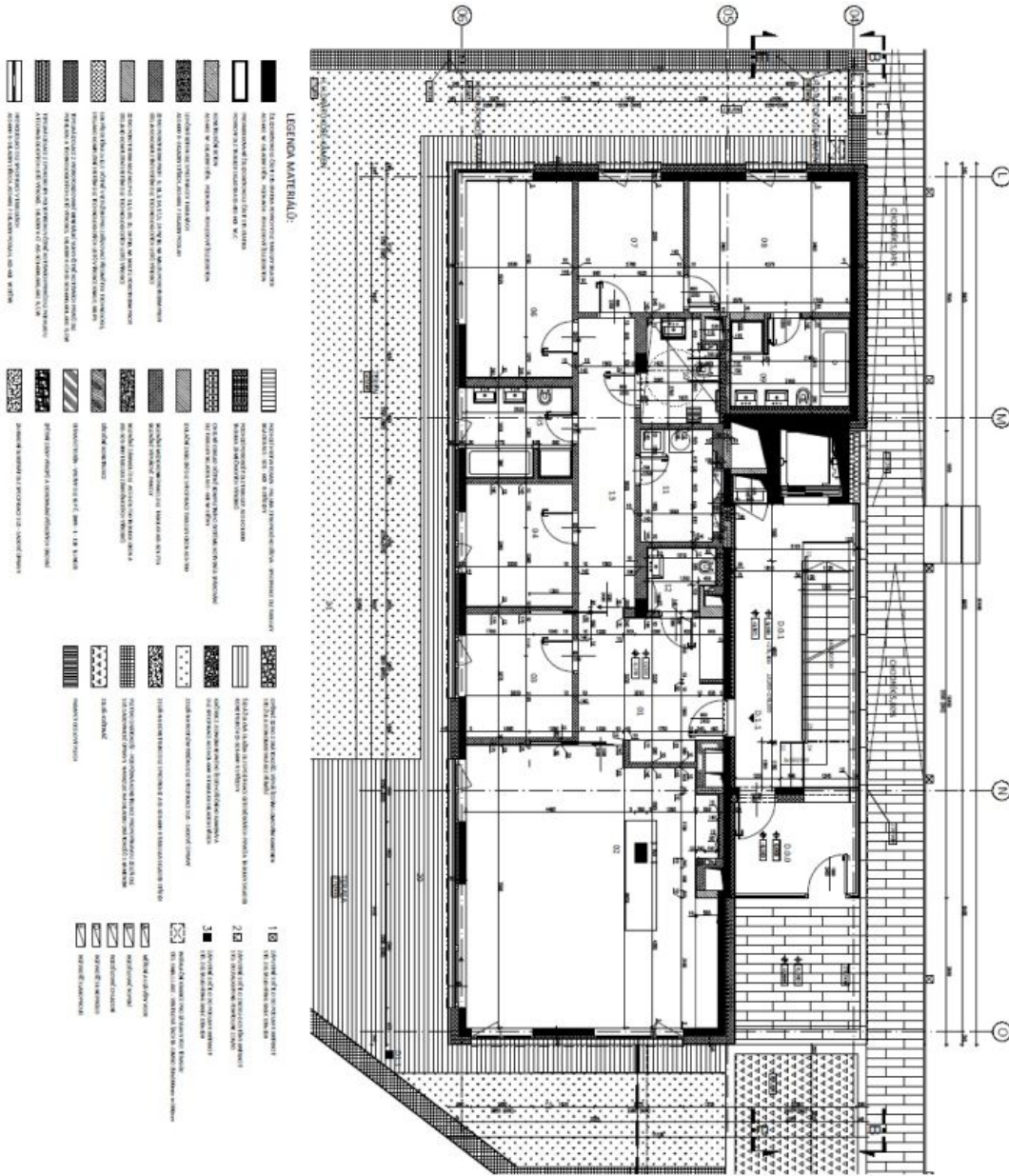
\* Area of the unit according to the Civil Code. The area consists of the sum total area of the entire unit bounded by perimeter walls.



# Apartment Four-bedroom (5+kk)

266 m<sup>2</sup>, Prague 6, Střešovice, U Laboratoře

Rented



**svoboda&williams**  
ARCHITECTS

Symbol	Legend Description
1	Door profile
2	Window profile
3	Wall construction detail
4	Floor construction detail
5	Roof construction detail
6	Structural column
7	Structural beam
8	Structural slab
9	Structural wall
10	Structural foundation
11	Structural reinforcement
12	Structural connection
13	Structural detail
14	Structural detail
15	Structural detail
16	Structural detail
17	Structural detail
18	Structural detail
19	Structural detail
20	Structural detail
21	Structural detail
22	Structural detail
23	Structural detail
24	Structural detail
25	Structural detail
26	Structural detail
27	Structural detail
28	Structural detail
29	Structural detail
30	Structural detail
31	Structural detail
32	Structural detail
33	Structural detail
34	Structural detail
35	Structural detail
36	Structural detail
37	Structural detail
38	Structural detail
39	Structural detail
40	Structural detail
41	Structural detail
42	Structural detail
43	Structural detail
44	Structural detail
45	Structural detail
46	Structural detail
47	Structural detail
48	Structural detail
49	Structural detail
50	Structural detail

Project for construction of a new building. Architectural design, architectural and engineering consultation. Author: