



# Land

1 037 m<sup>2</sup>, Praha 6, Dejvice, Pokojná

**Sold**



POKOJNÁ - VIZUALIZACE 2





## Land

1 037 m<sup>2</sup>, Praha 6, Dejvice, Pokojná

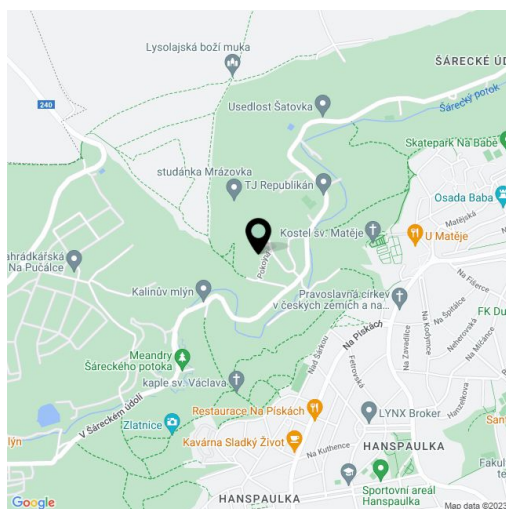
Sold

Price per sq. m.	19 286 CZK
Total area	1 037 m <sup>2</sup>
Land type	Housing
Reference number	22955

Land for sale located in an attractive natural area of Tichá Šárka, surrounded by forest on all sides and overlooking St. Matěj church. **1037 m<sup>2</sup>** offered together with a **study** by an architectural studio. The land has a connection to water and electricity, a private access asphalt road, and is intended for the construction of a modern villa. The land is gently sloping, **south-facing**, and overlooks a pretty valley complete with the Šárecký Creek. Just beyond the plot is the entrance to the protected landscape area, stretching to the Suchdol and Lysolaje quarters.

Quiet location with **easy access to downtown Prague, the airport and the international schools in Prague 6**, with bus connections to the Dejvická metro station and full amenities in the neighborhood. Global Concept Montessori School nearby and the International School of Prague is 10 minutes by car.

The land is currently undergoing a change in the status of use from garden to plot of land with possibility of construction.



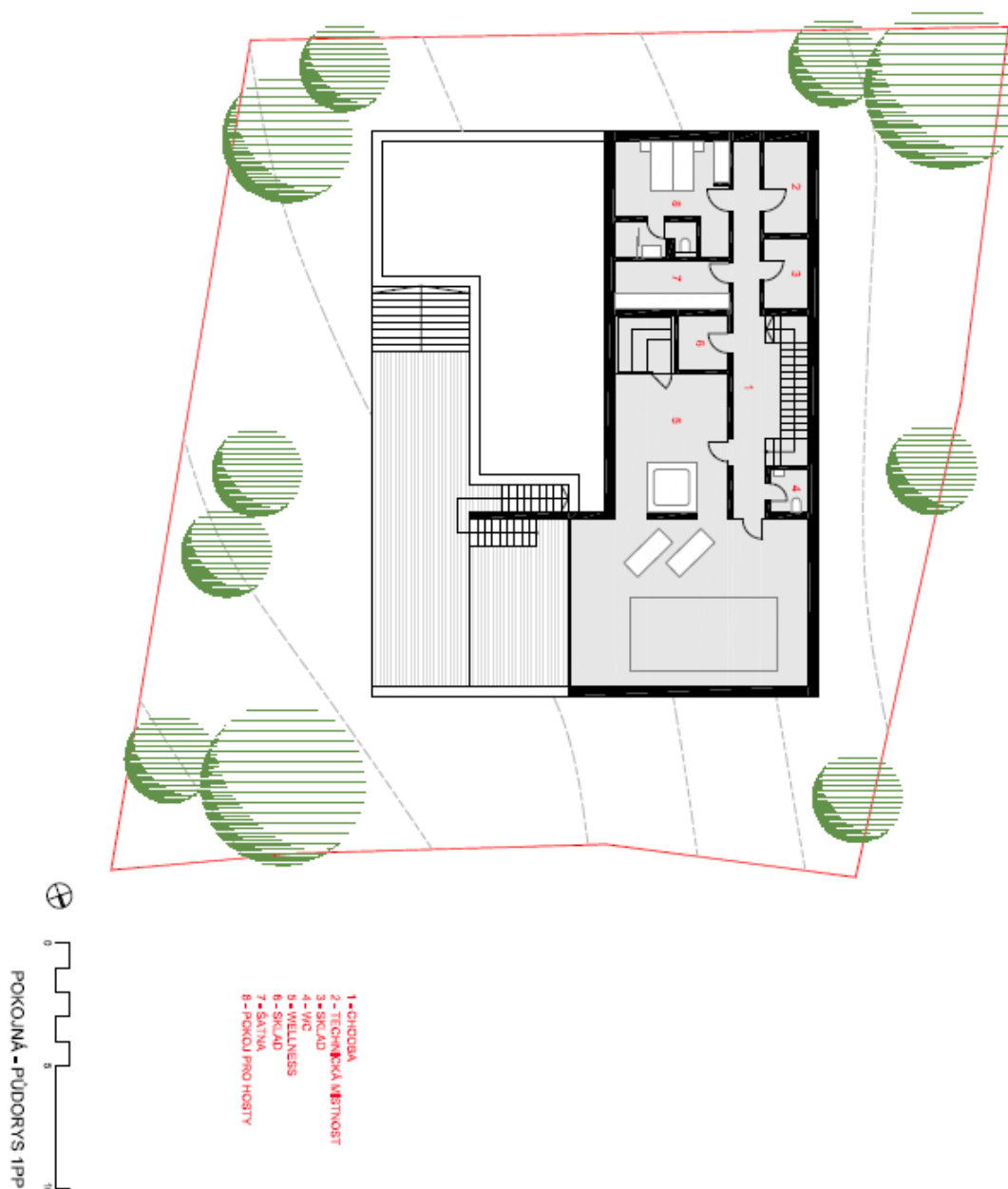




# Land

1 037 m<sup>2</sup>, Praha 6, Dejvice, Pokojná

Sold

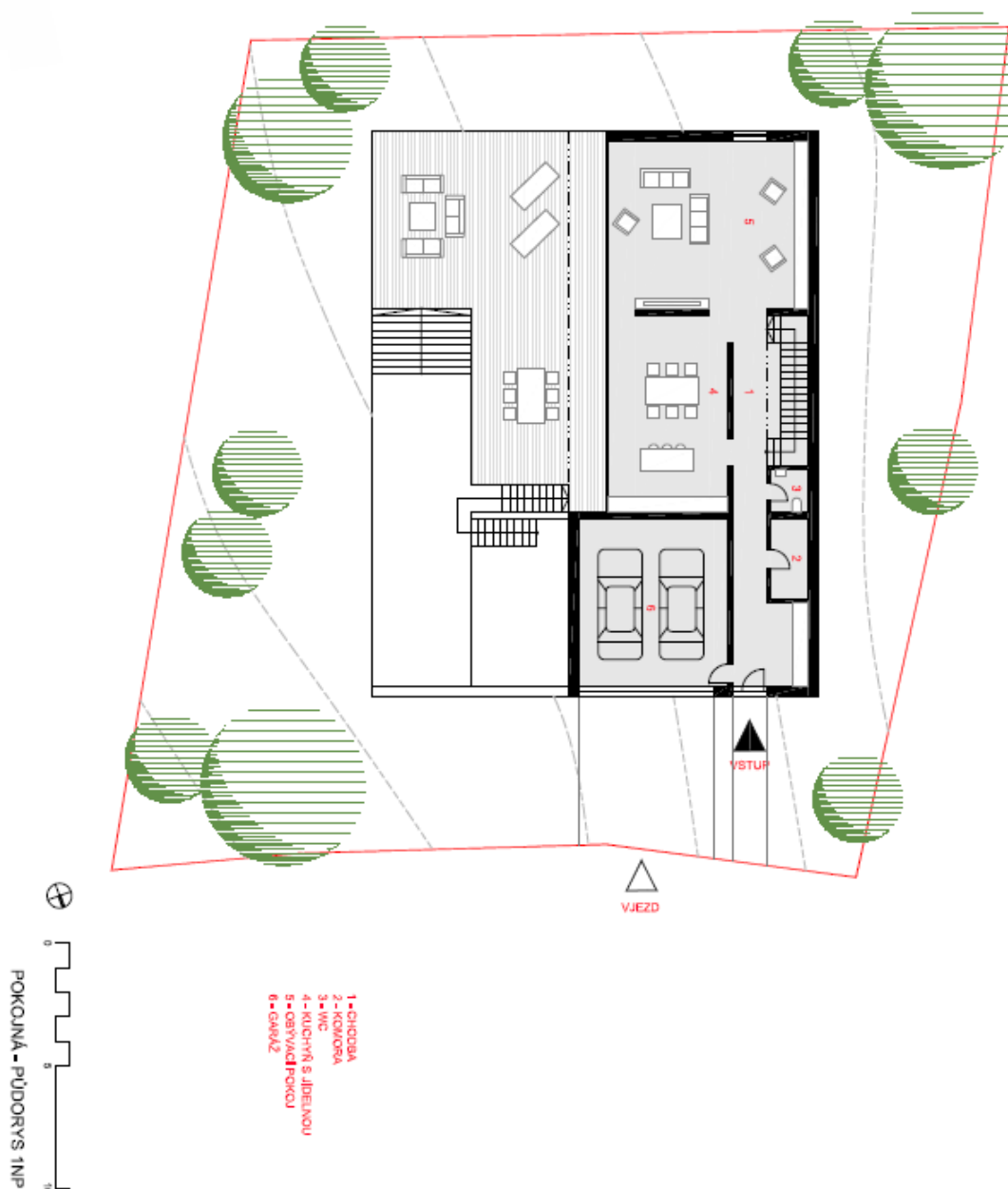




Land

1 037 m<sup>2</sup>, Praha 6, Dejvice, Pokojná

Sold





# Land

1 037 m<sup>2</sup>, Praha 6, Dejvice, Pokojná

Sold





## Land

1 037 m<sup>2</sup>, Praha 6, Dejvice, Pokojná

**Sold**

