



Apartment Four-bedroom (5+kk)

Sold

179 m², Prague 6, Břevnov





Apartment Four-bedroom (5+kk)

Sold179 m², Prague 6, Břevnov

Total area	285 m ²
Floor area*	179 m ²
Terrace	106 m ²
Parking	Possibility to rent a garage parking space
Garage	Yes
Cellar	Yes
Service price	3 149 CZK monthly
PENB	G
Reference number	22967

* Area of the unit according to the Civil Code. The area consists of the sum total area of the entire unit bounded by perimeter walls.

Spacious split-level attic flat boasting a large roof terrace overlooking the city. Situated on the 5th and 6th floors of a corner apartment building with an elevator, in a desirable residential area of Břevnov, Prague 6. Located within walking distance of Prague Castle and Landronka and Kajetánka parks.

The lower floor of the apartment offers an open-plan living room with dining area, kitchen and stairs leading to the upper floor; 3 bedrooms, bathroom with bathtub, shower and two sinks, 2 separate toilets, utility room, and a hall. On the upper floor is another bedroom / study, storage room, atrium and a large roof terrace. **All rooms are facing east or west.**

Equipped with **wooden floorboards**, ceramic tiles, **wooden windows** and doors, security entry door, fully equipped kitchen, gas boiler. Exposed beams provide a lovely romantic atmosphere. Loft conversion finished in 2002. The purchase price includes a **cellar**, possibility to rent a **garage parking space** opposite the house for CZK 1 900 / month. In the house there is also a pram room, and a room for bicycles.

In addition to numerous parks, in the neighborhood you can also find the Dlabačov cinema, Petynka swimming pool, primary and nursery schools, restaurants, shops and other services. Excellent transport accessibility to the city center and to the airport; a tram stop with direct connection to the subway is only a few steps from the building.

Interior 179 m², terrace 106 m², cellar.

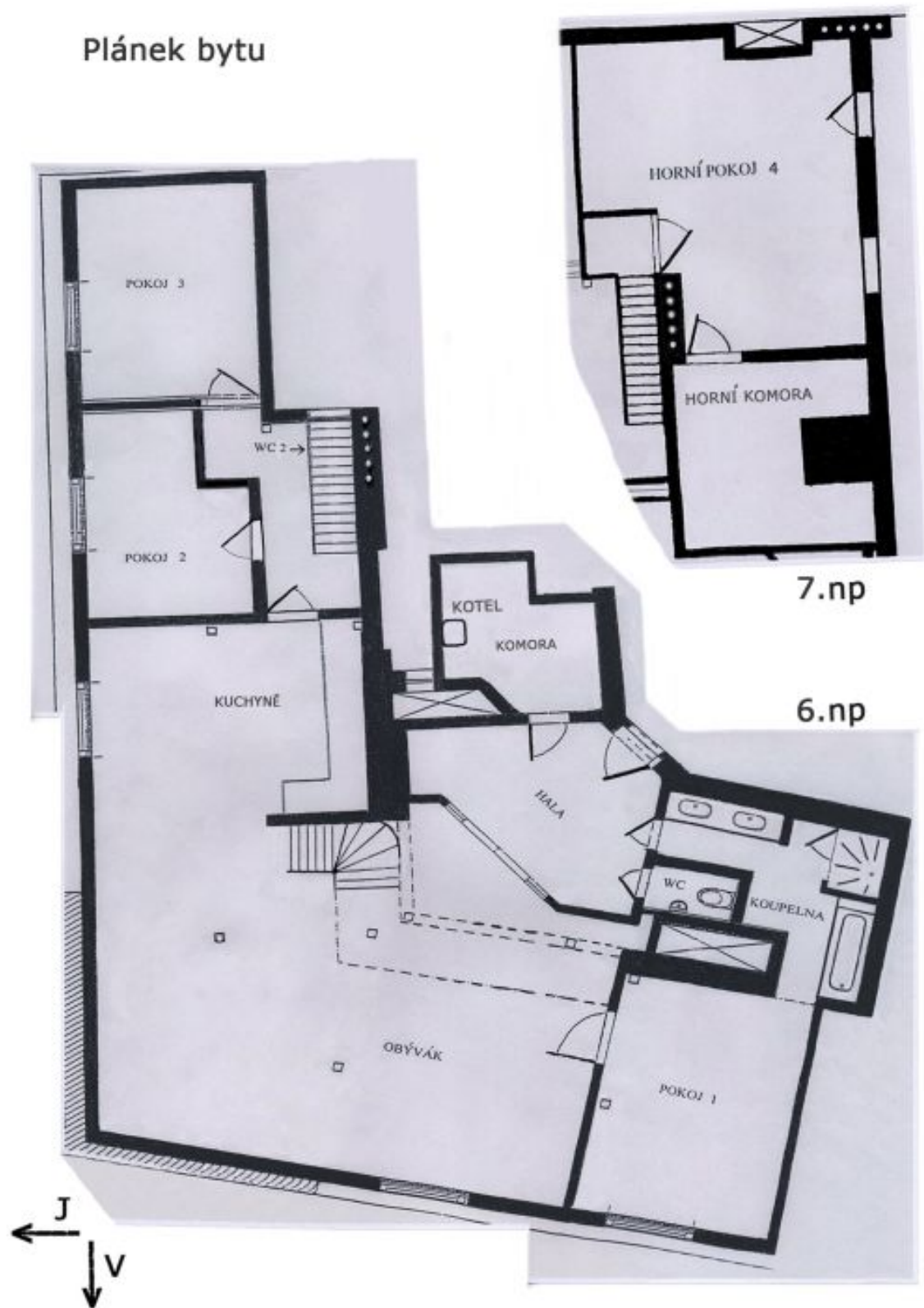


Apartment Four-bedroom (5+kk)

Sold

179 m², Prague 6, Břevnov

Plánek bytu



7.np

6.np