



House Five-bedroom (6+kk)

Sold

288 m², Praha-východ, Zdiby, Půlnoční





House Five-bedroom (6+kk)

Sold288 m², Praha-východ, Zdiby, Půlnoční

Total area	288 m ²
Plot	1 049 m ²
Foot print	159 m ²
Garden	890 m ²
Floor area	232 m ²
Terrace	56 m ²
Parking	-
Cellar	-
PENB	B
Reference number	23002

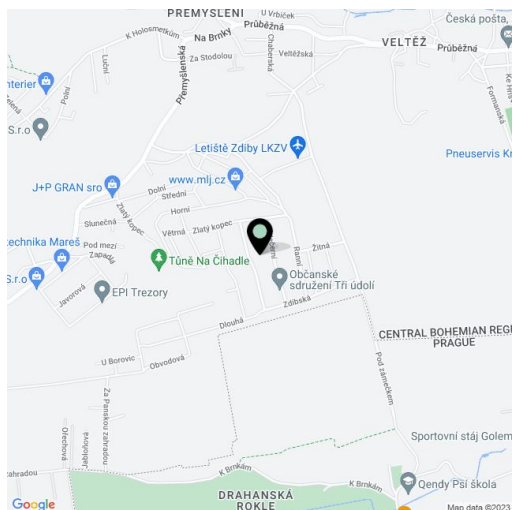
Sunny, south-facing family house with an outdoor pool and professionally landscaped Feng-Shui garden, located on a quiet street in a residential area of Zdiby – Brnky, a 15-minute drive from the Kobylisy metro station.

The ground floor consists of a living room with dining area, kitchen and **French doors leading to the garden**, guest bedroom with en-suite bathroom (shower and toilet), separate toilet, pantry, gym / study, a workshop with separate entrance, and a hall. Upstairs are 3 bedrooms (one with en-suite bathroom w/ bathtub & toilet), large main bathroom (bathtub, shower, toilet, two sinks), and a staircase hall.

Facilities include wood and laminate floating floors, large format tiles, plastic windows and wooden skylights, Sapeli veneer interior doors, security entry door, electric boiler, **heat pump**. Paved parking space on the property. The building approval took place in 2004.

Quiet and green location with excellent access to the Metro and the city center. Within a 20-minute walk you can find a **forest** and the Vltava River. Basic amenities are available in neighboring Veltěž, complete services in nearby Dolní Chabry and Čimice.

Interior 232 m², built-up area 159 m², garden 890 m², plot 1 049 m².

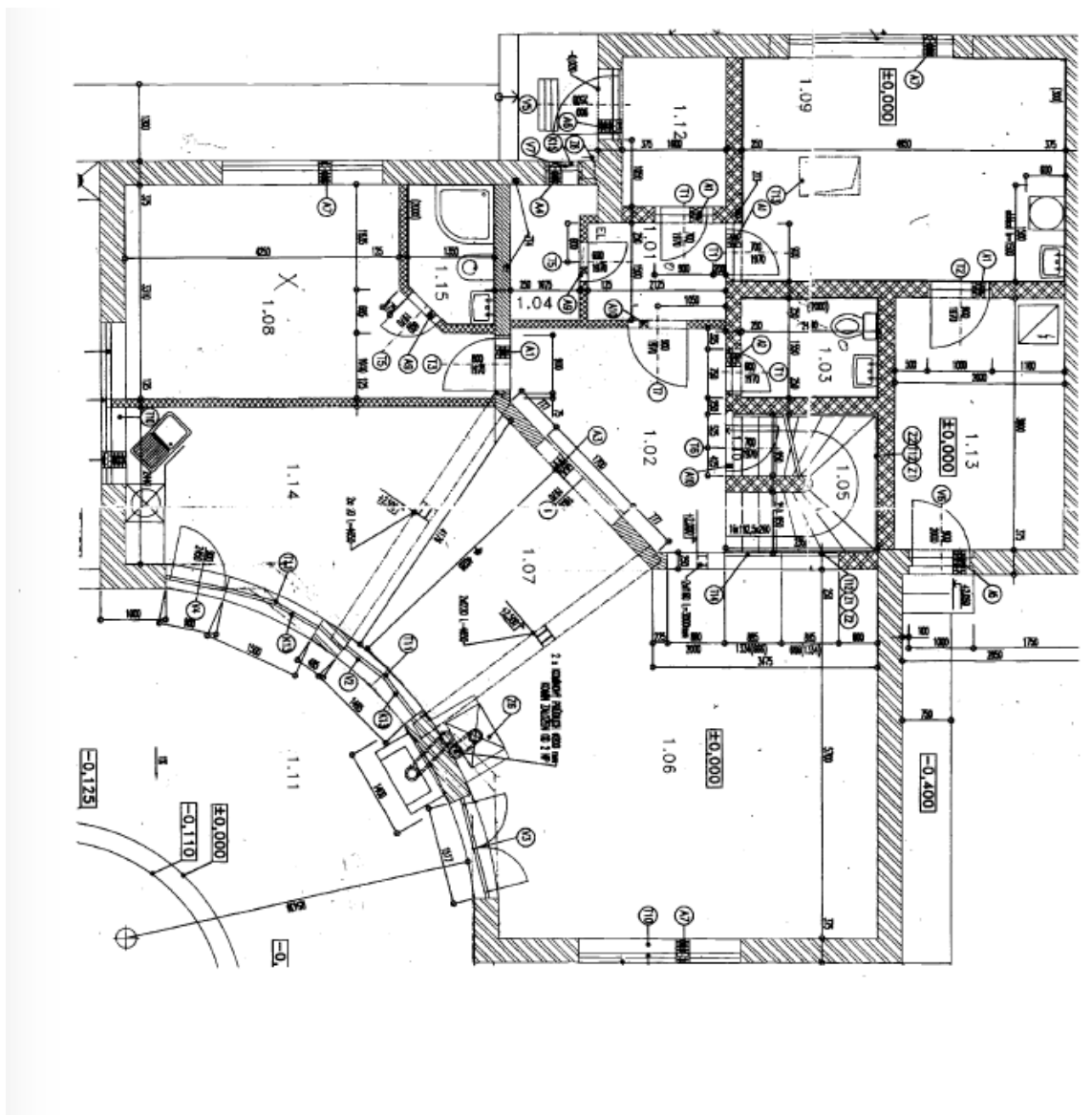




House Five-bedroom (6+kk)

288 m², Praha-východ, Zdiby, Půlnoční

Sold





House Five-bedroom (6+kk)

288 m², Praha-východ, Zdiby, Půlnoční

Sold

