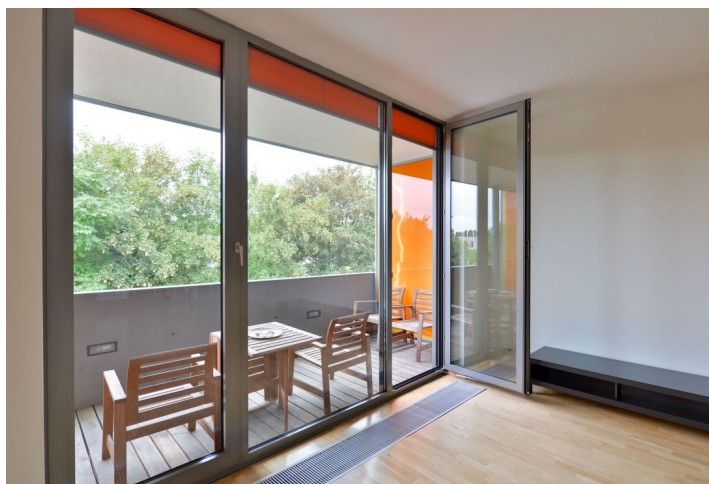




Apartment One-bedroom (2+kk)

Sold

68 m², Praha 6, Břevnov, Běžecká





Apartment One-bedroom (2+kk)

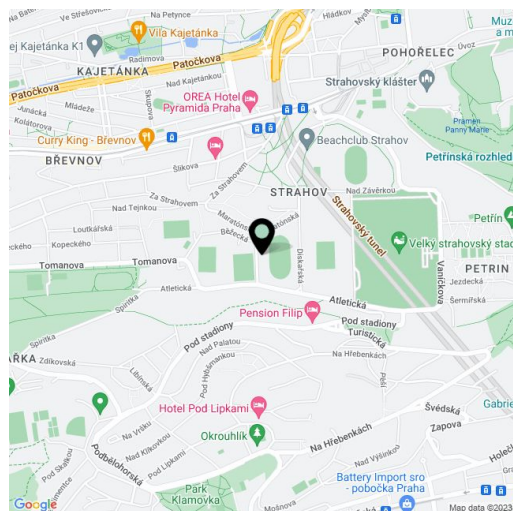
Sold68 m², Praha 6, Břevnov, Běžecká

| | |
|------------------|------------------------|
| Total area | 76 m ² |
| Floor area* | 68 m ² |
| Loggia | 8 m ² |
| Parking | 1 garage parking space |
| Garage | Yes |
| Cellar | - |
| Service price | 3 000 CZK monthly |
| PENB | G |
| Reference number | 23006 |

1-bedroom duplex apartment with enclosed balcony overlooking greenery, situated on the first floor of a modern residential complex in Strahov, just a few minutes' drive to the French Lyceum, within easy reach of Ladronka Park and Strahov sports grounds. Quiet and sought-after location with easy access downtown.

The entrance to the apartment is on the ground floor; there is a small hallway, with stairs leading to the 1st floor, consisting of a west-oriented living room with dining area, kitchen, large windows & balcony, an east-facing bedroom, bathroom with bathtub and toilet, and a central corridor. Equipment includes **wooden floors**, ceramic tiles, wooden windows, solid wood and veneered interior doors, security entry door, underfloor central heating provided by a boiler room in the house. Ceiling height of 2.7 meters. The purchase price includes **1 garage parking space**. The building approval took place in 2007.

Interior 68 m², enclosed balcony 8 m².



* Area of the unit according to the Civil Code. The area consists of the sum total area of the entire unit bounded by perimeter walls.