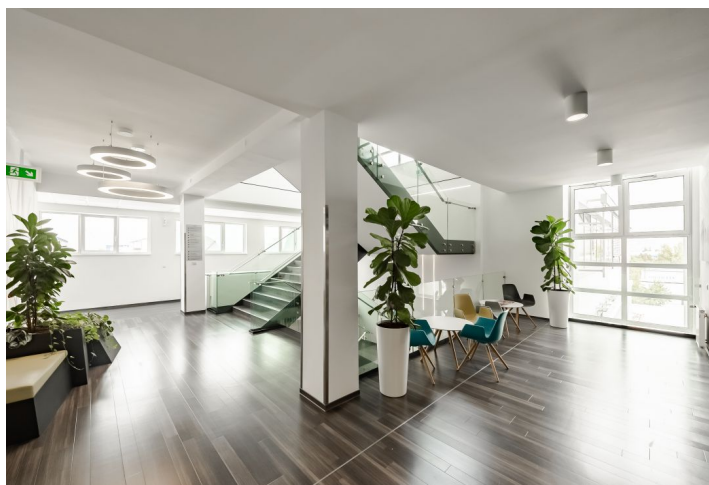




Office space

Praha 10, Hostivař, Průmyslová

€ 12.23 / m² | CZK 310 / m²



**Office space**

Praha 10, Hostivař, Průmyslová

€ 12.23 / m² | CZK 310 / m²

Service price	145 CZK monthly per m ²
Available area	231 m ²
Cellar	-
Parking	CZK 1200 / pp / month
PENB	G
Reference number	23024

Office space for lease on the 2nd floor in an original two-storey building constructed in 1970s which was rebuilt as three-storey office building in 2000 and is situated in Prague 10 – Hostivař.

Location:

Very easily accessible by car and public transport – in vicinity of bus stops with connection to Skalka metro station (line A). Easy access to Prague ring. Hostivař nature park nearby.

Features and Services:

- Reception
- 24-hour security
- Openable windows
- Electronically controlled external blinds facing the sunny side
- Air conditioning
- Restaurant on the ground floor
- Parking
- Floor covering - carpet squares
- New interior painting
- Kitchenette

Rental and service charges are listed without VAT. Lessee pays no commission.

