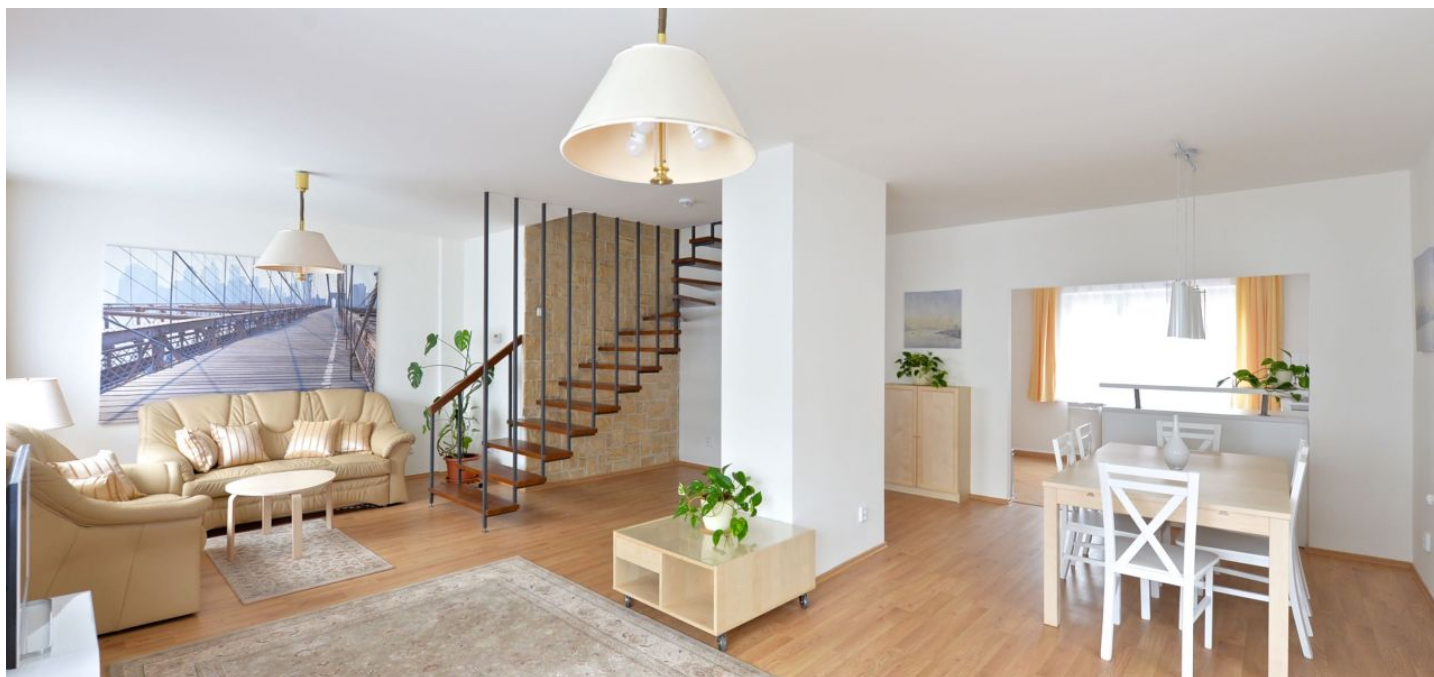




Apartment Four-bedroom (5+1)

Rented

181 m², Prague 5, Košíře, Průchova





Apartment Four-bedroom (5+1)

Rented

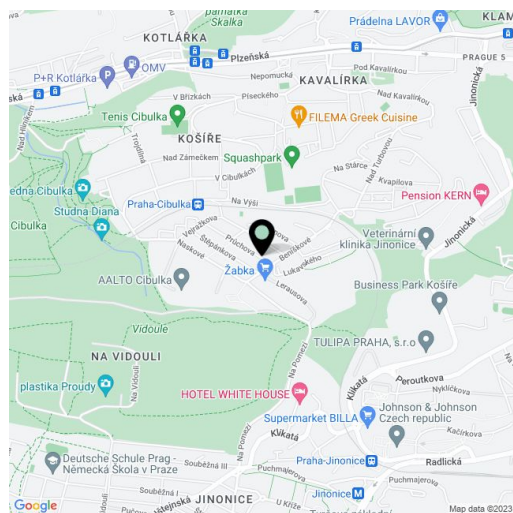
181 m², Prague 5, Košíře, Průchova

Total area	181 m ²
Garden	165 m ²
Parking	Garage parking.
Garage	Yes
Cellar	Yes
PENB	G
Reference number	23112
Available from	Immediately

Benefiting from a cozy garden, this is a fully furnished 4-bedroom split-level flat on the ground floor of a newly renovated corner townhouse, situated in a tranquil street in a green residential area near the Cibulka natural park. Quick access to Anděl metro station and commercial center. Tennis courts, jogging path, kindergarten and primary school close by, convenient to the German School.

The lower level includes a 39 m² living room with dining area and a fully fitted open kitchen, winter garden with access to the back garden, guest toilet, and entrance hall with built-in wardrobes. The upper level features three regular bedrooms, a small bedroom (or study), shower bathroom with toilet, and storage room. There is a basement floor incl. a laundry room, storage space and utility area.

Laminated floors and tiles, washing machine, dishwasher, microwave oven, LCD TV, dishes and kitchenware, bedding, alarm, Internet. Garage and easy parking on the street. Common building charges and utilities CZK 5000/month. Interior: 181 m². Garden: 165 m².



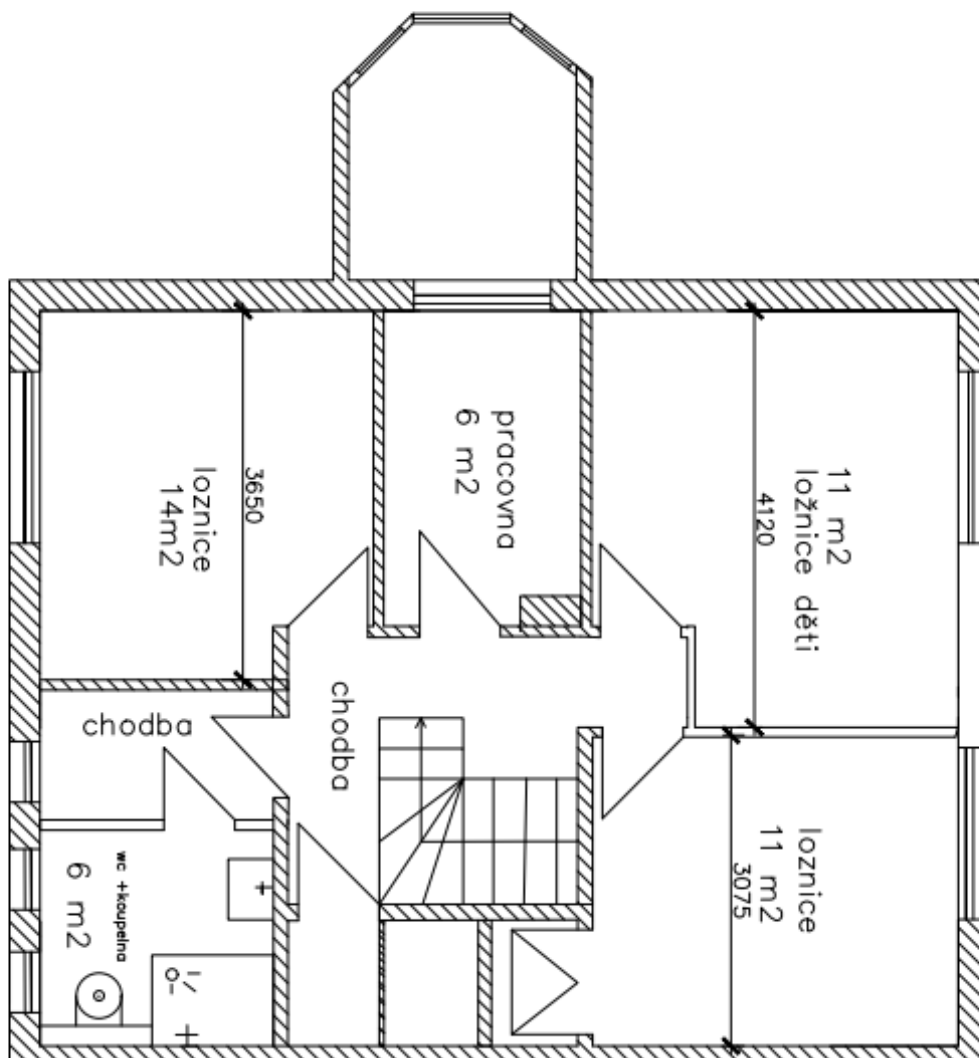
* Area of the unit according to the Civil Code. The area consists of the sum total area of the entire unit bounded by perimeter walls.



Apartment Four-bedroom (5+1)

181 m², Prague 5, Košíře, Průchova

Rented

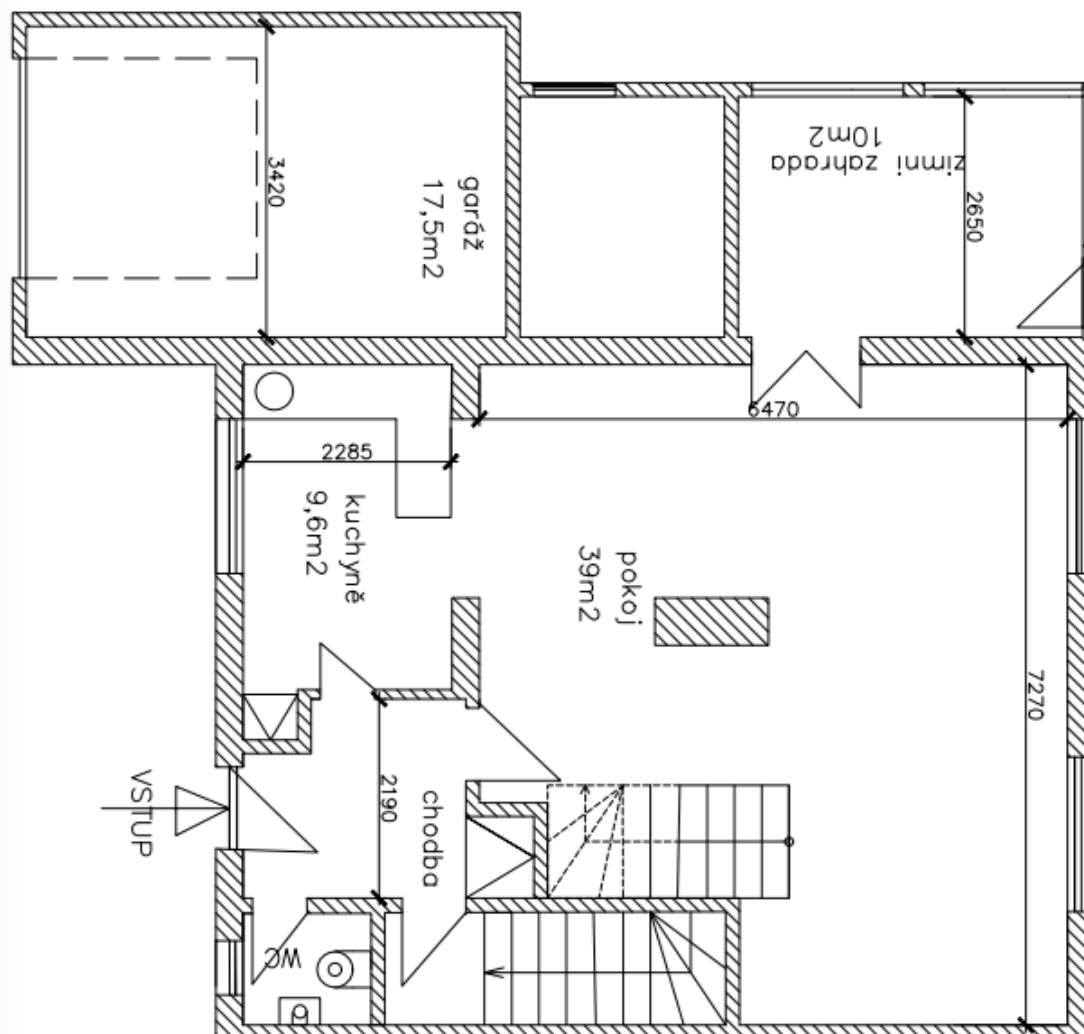




Apartment Four-bedroom (5+1)

181 m², Prague 5, Košíře, Průchova

Rented





Apartment Four-bedroom (5+1)

181 m², Prague 5, Košíře, Průchova

Rented

