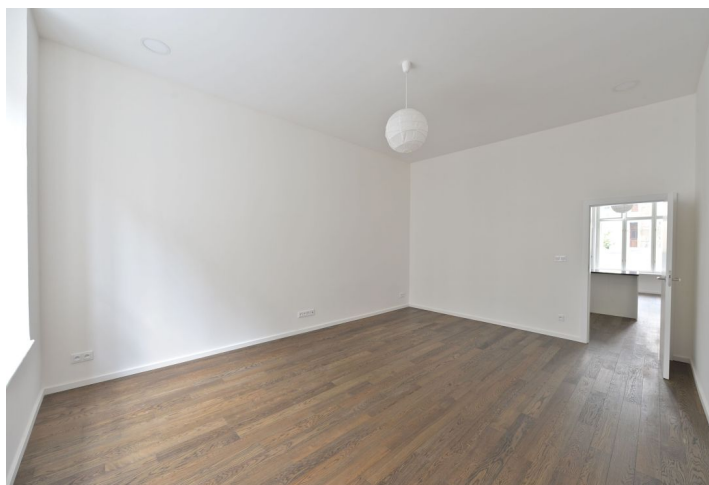




Apartment Two-bedroom (3+1)

Sold

95 m², Prague 1, Staré Město, Bílkova





Apartment Two-bedroom (3+1)

Sold95 m², Prague 1, Staré Město, Bílkova

Total area	95 m ²
Parking	-
Cellar	Yes
Service price	4 400 CZK monthly
PENB	G
Reference number	23143

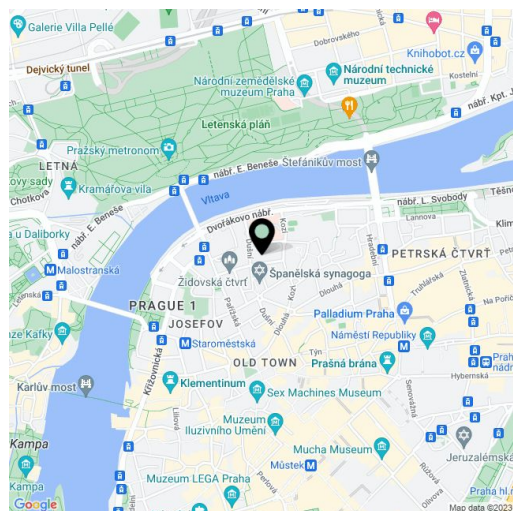
Bright 2-bedroom, 2-bathroom flat after a complete new reconstruction, on the 2nd floor of an Art Nouveau building in a sought-after area of old Prague. Prestigious address only steps from the famous Pařížská Street and Vitava embankment, within walking distance of Old Town Square and Letná Park.

The layout offers a living room, eat-in kitchen, 2 bedrooms, 2 bathrooms (one en-suite to the master bedroom with bathtub and toilet, one shared with a shower and toilet), walk-in wardrobe, and a utility room.

Triple-layer solid heated floors, large-format tiles, refurbished large casement windows, fully equipped new kitchen boasting a clean design, quality sanitary ware and bathroom fixtures, **alarm**, Junkers gas boiler. Reconstruction of the apartment was completed in March 2016. The purchase price includes a **new cellar**. Common building charges CZK 4 400/month.

Sought after and highly attractive location just 5 minutes on foot from Letná Park as well as the Staroměstská metro station. Easy parking in a residential zone or in a guarded parking lot 100 meters from the apartment building, possibility to rent a garage parking space in the nearby Hotel Intercontinental.

Interior 95.4 m², cellar 3 m².



* Area of the unit according to the Civil Code. The area consists of the sum total area of the entire unit bounded by perimeter walls.



Apartment Two-bedroom (3+1)

95 m², Prague 1, Staré Město, Bílkova

Sold

