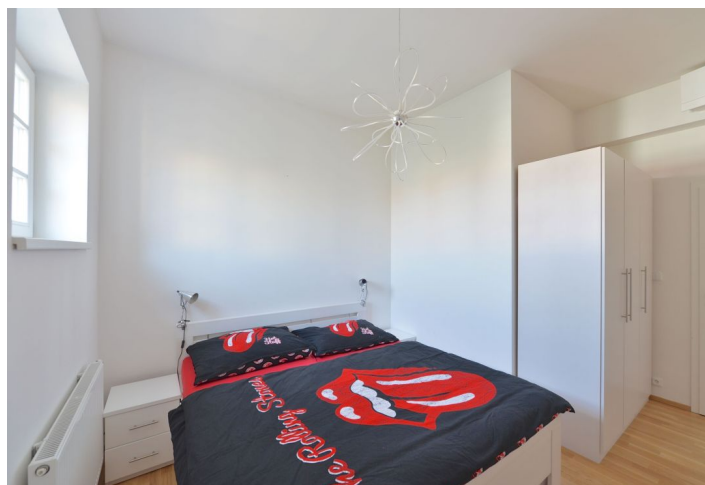




Apartment One-bedroom (2+kk)

Rented

62 m², Prague 6, Bubeneč, Bubenečská





Apartment One-bedroom (2+kk)

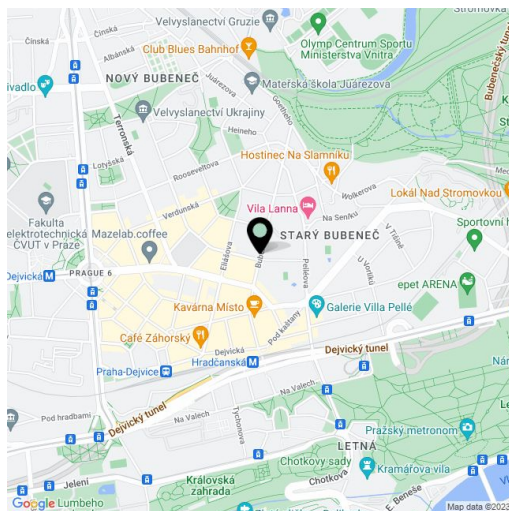
Rented62 m², Prague 6, Bubeneč, Bubenečská

Total area	67 m ²
Floor area*	62 m ²
Balcony	5 m ²
Parking	-
Cellar	-
PENB	G
Reference number	23259
Available from	Immediately

Furnished fully air-conditioned west oriented 1-bedroom flat with a balcony and green views on the fifth floor of a reconstructed traditional building with lift and preserved original details. Located in a quiet prestigious embassy district just minutes from Hradčanská metro station, with full amenities within easy reach. Convenient to the Prague 6 international schools and the airport. A short walk to the Prague Castle, and Stromovka and Letná Parks.

The interior includes one bedroom, a comfortable living room with a modern fully fitted open kitchen and balcony access, shower bathroom, a separate toilet, and entry hall.

Parquet floors, tiles, security entry door, gas boiler, dishwasher, microwave, insect net in the French windows leading to the balcony, Internet. Common building charges and water CZK 750 per month/one person. Gas and electricity around CZK 1600/month for one person. Interior: 62 m². Balcony: 5 m².



* Area of the unit according to the Civil Code. The area consists of the sum total area of the entire unit bounded by perimeter walls.