





Retail space

Sold186 m², Prague 7, Holešovice, Milady Horákové

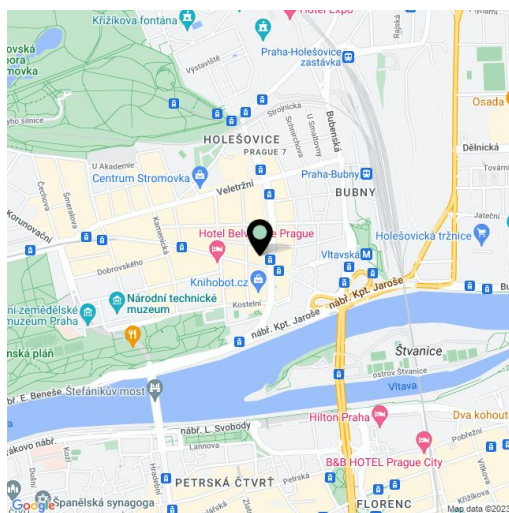
Total area	186 m ²
Parking	-
PENB	G
Reference number	23281

Separate commercial unit (house in a courtyard with entry from the street), with the possibility of creating a garage, near Strossmayerovo náměstí square and Vltavská metro station. The building offers a wide range of use according to the needs of the future owner.

The lower floor of the house is designed as an open space. The upper floor features high ceilings and includes one large and two smaller rooms. The whole building (except for a **new roof**) is suitable for complete reconstruction with different concepts of use (eg. office, studio, showroom, loft), with a project proposal and requesting of a building permit entirely in the hands of the new owner. Opportunity to build a **garage parking space** within the lower floor of the house. Possible to purchase an additional **underground storage space** with an area of 400 m².

The property is located at the bottom of Milady Horákové Street, in the vicinity of Strossmayerovo náměstí square and within walking distance of Prague's most popular parks and metro station (line C). Excellent amenities and transport accessibility.

Interior 185.5 m².

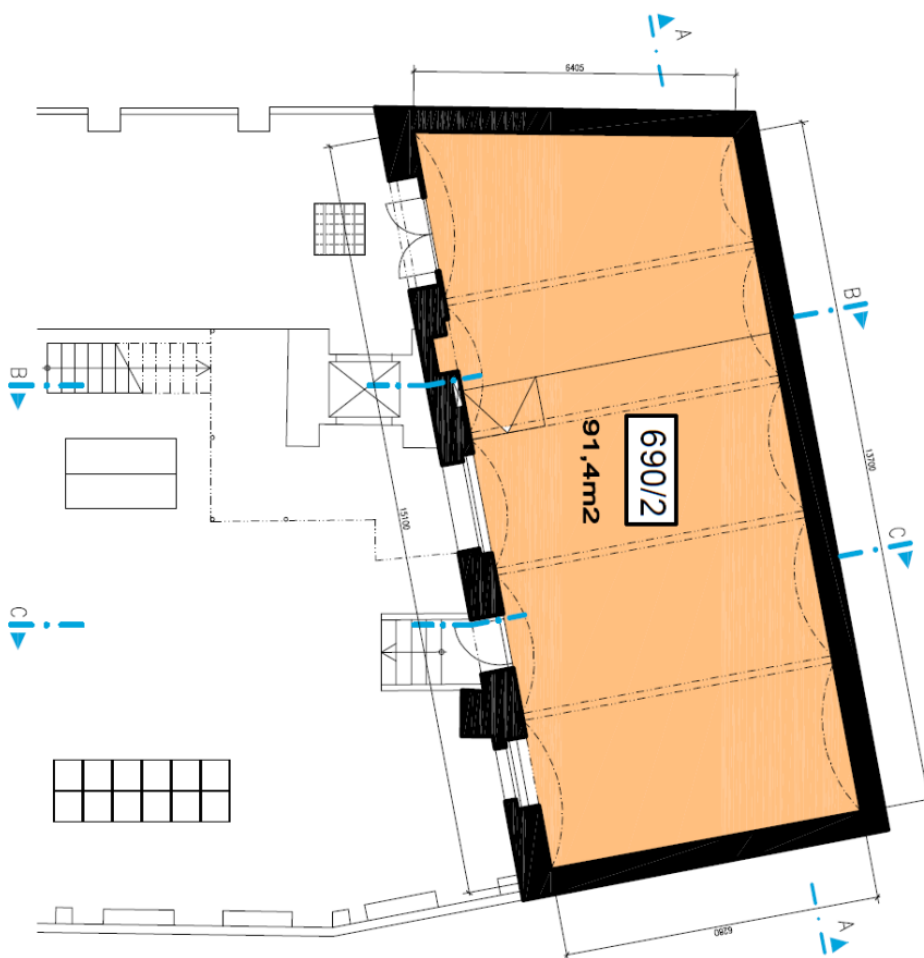




Retail space

186 m², Prague 7, Holešovice, Milady Horákové

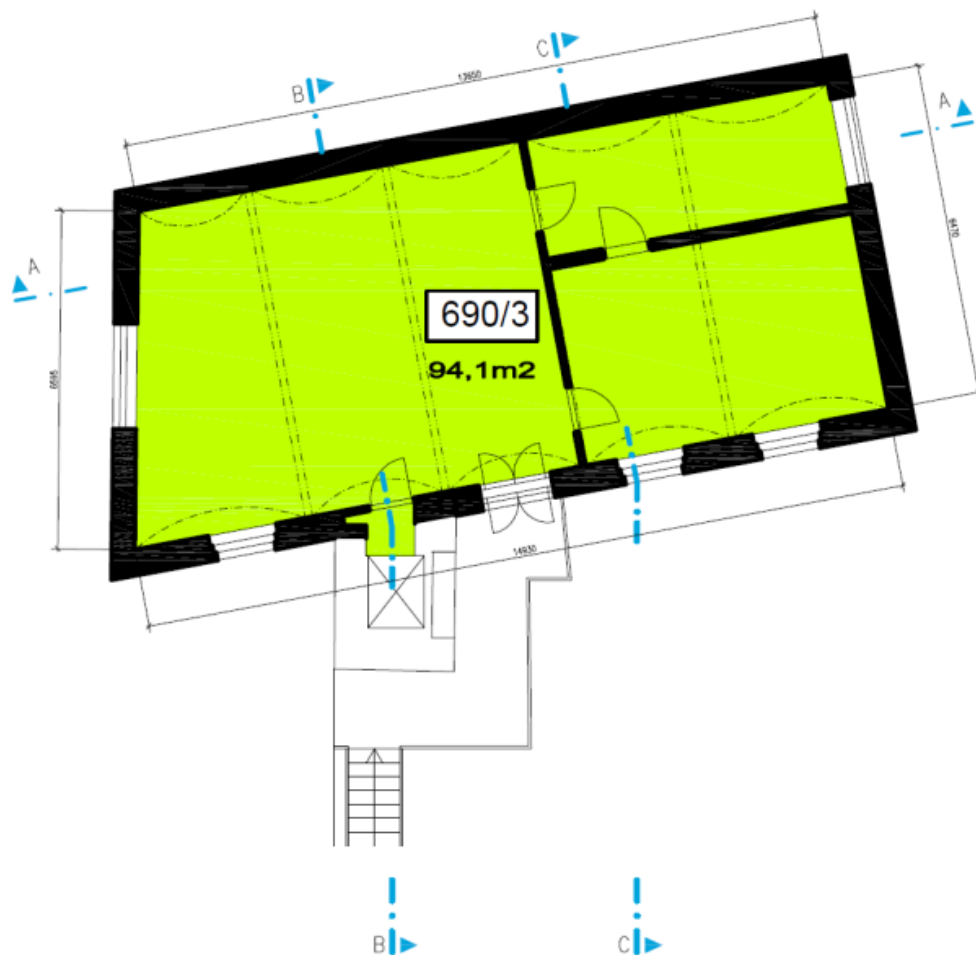
Sold



PŮDORYS 1.NP DVORNÍHO OBJEKTU -91,4m2



PŮDORYS 2.NP DVORNÍHO OBJEKTU -94,1m²

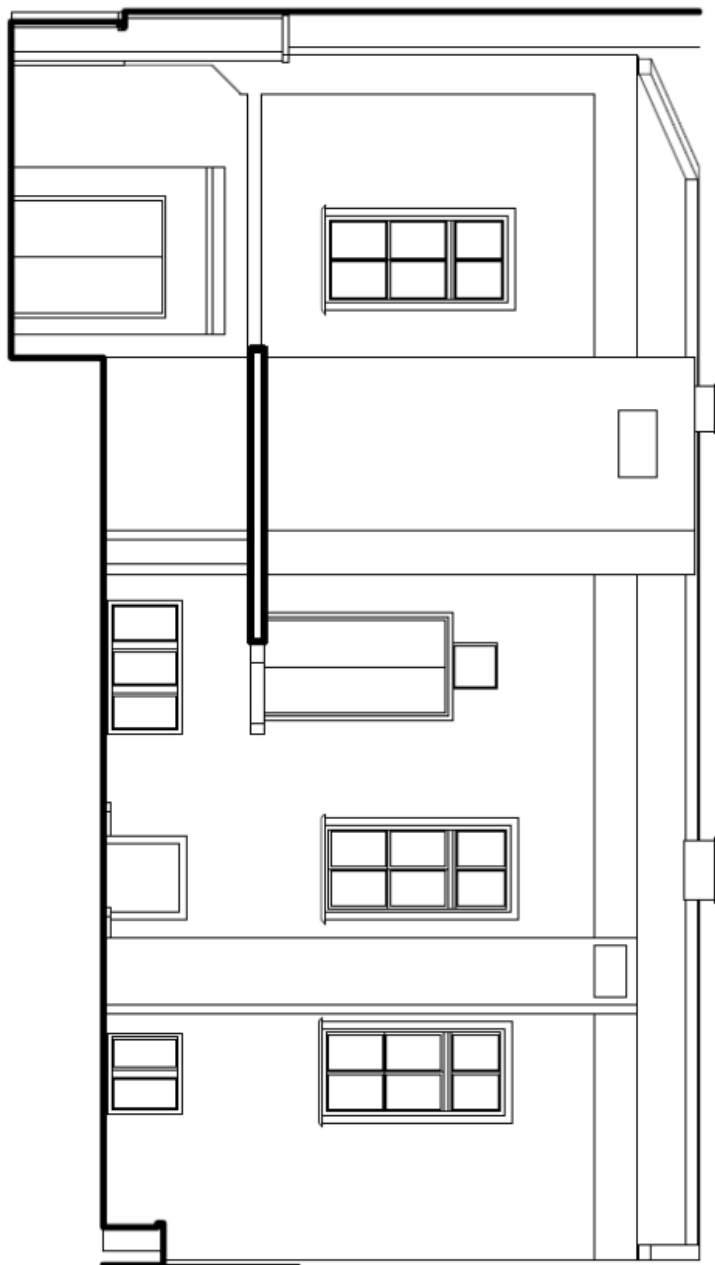




Retail space

186 m², Prague 7, Holešovice, Milady Horákové

Sold



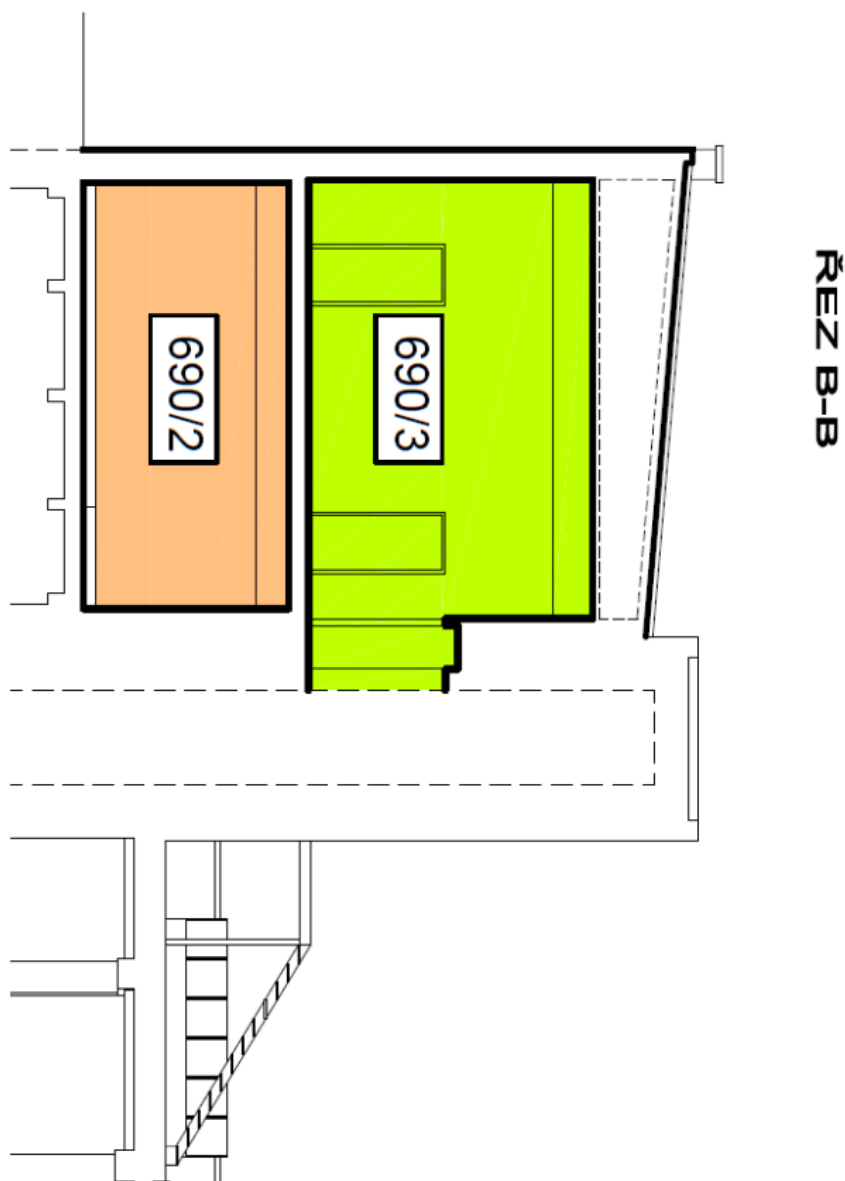
FASÁDA DVORNÍHO OBJEKTU



Retail space

186 m², Prague 7, Holešovice, Milady Horákové

Sold

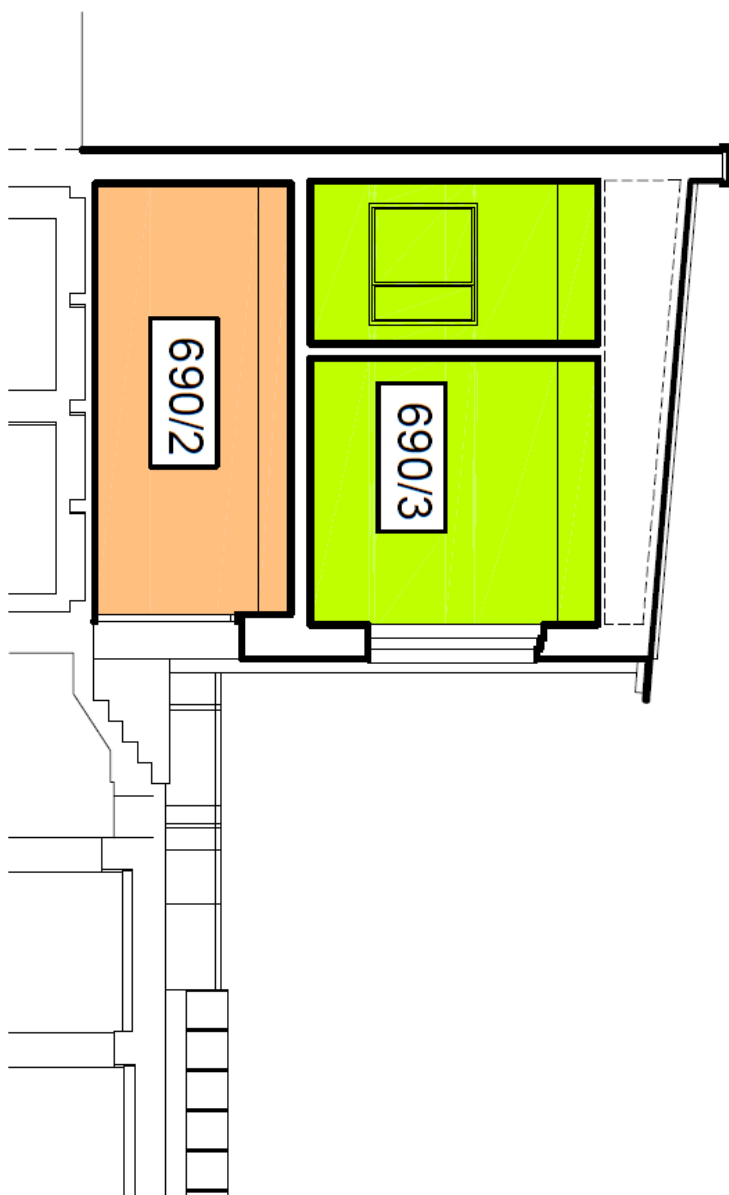




Retail space

186 m², Prague 7, Holešovice, Milady Horákové

Sold



ŘEZ C-C