



Office space

Prague 7, Holešovice, Milady Horákové

Sold





Prague 7, Holešovice, Milady Horákové

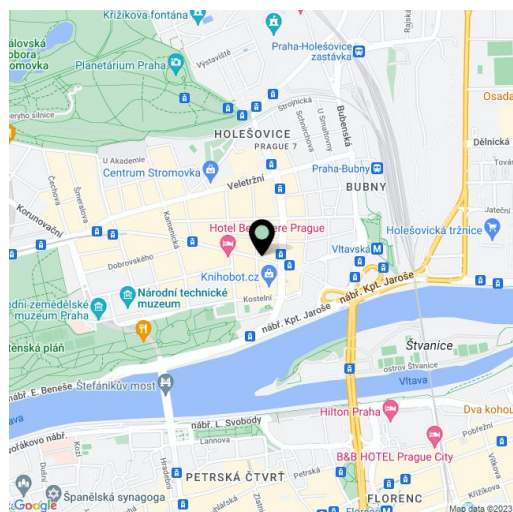
Available area	186 m ²
Tenant consumption	—
Parking	Yes
Parking service charges	—
Parking ratio	—
Certification	—
PENB	G
Reference number	23288

Separate commercial unit – house in the courtyard with an entry from the street, with a possibility of creating a garage, near Strossmayerovo náměstí Square and Vltavská metro station. The building offers a wide range of use according to the needs of the future owner.

The lower floor of the house is designed as an open space. The upper floor features high ceilings and includes one large and two smaller rooms. Whole building (except for a **new roof**) is suitable for complete reconstruction with different concepts of use (eg. office, studio, showroom, loft), with a project proposal and requesting of a building permit entirely in the hands of the new owner. Opportunity to build a **garage parking space** within the lower floor of the house. Possible to purchase an additional **underground storage space** with an area of 400 m².

The property is located at the bottom of Milady Horákové Street, in the vicinity of Strossmayerovo náměstí Square and within walking distance of Prague's most popular parks and metro station (line C). Excellent amenities and transport accessibility.

Interior 185.5 m².

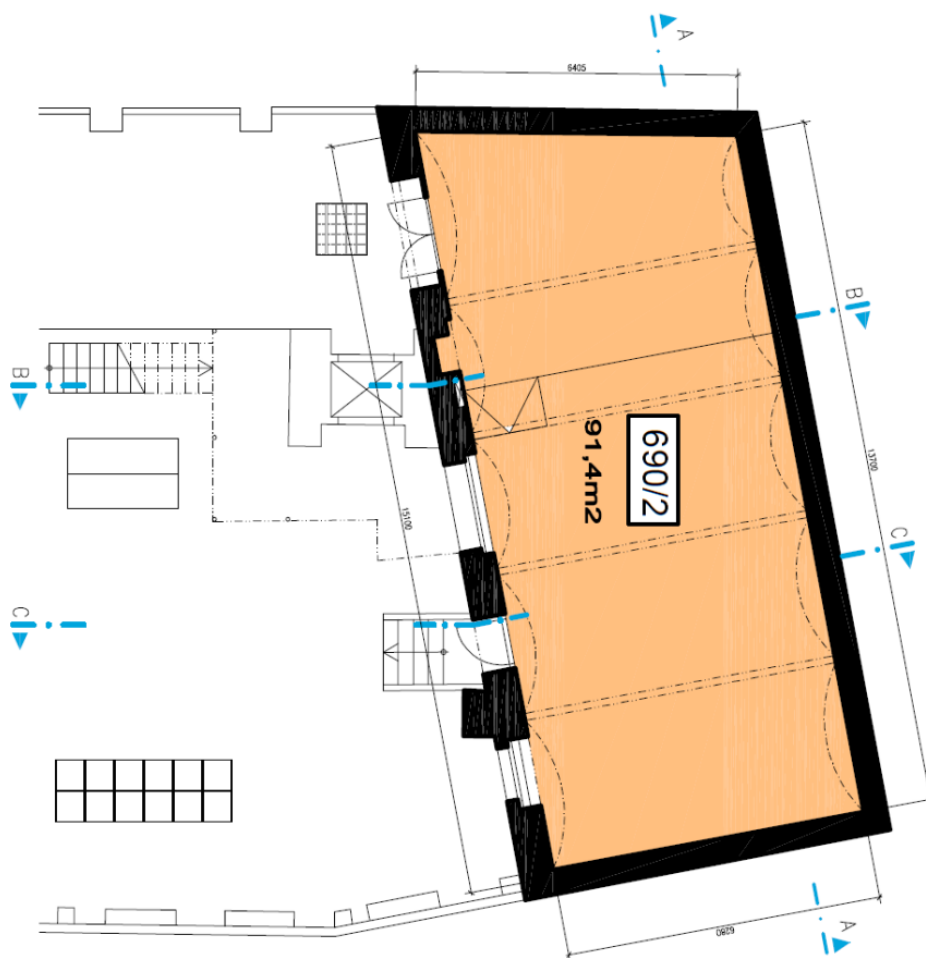




Office space

Prague 7, Holešovice, Milady Horákové

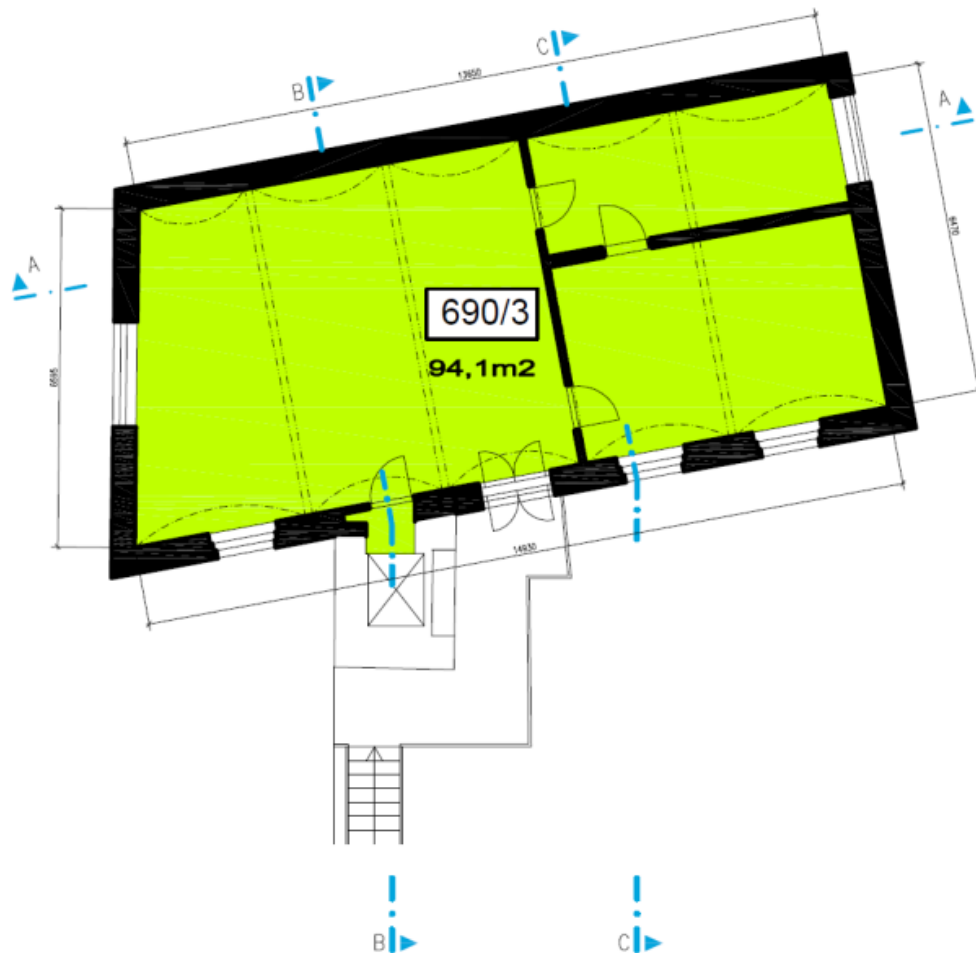
Sold



PŮDORYS 1.NP DVORNÍHO OBJEKTU -91,4m²



PŮDORYS 2.NP DVORNÍHO OBJEKTU -94,1m²

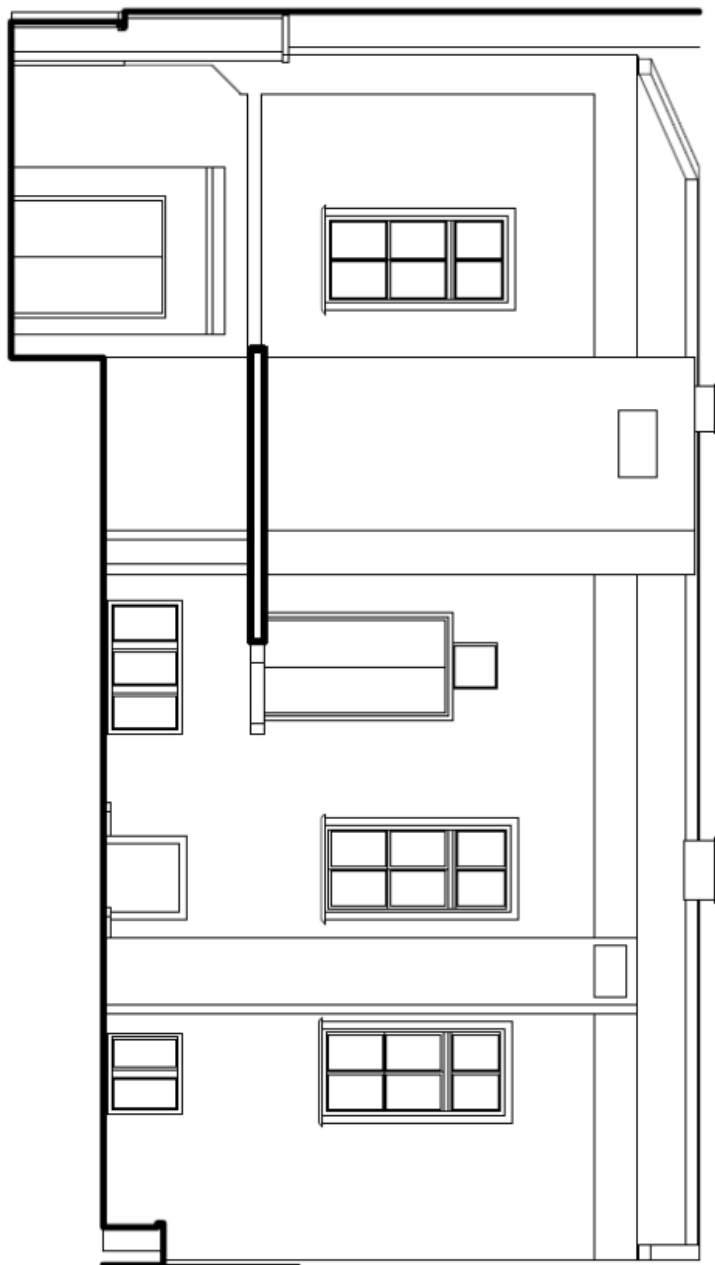




Office space

Prague 7, Holešovice, Milady Horákové

Sold



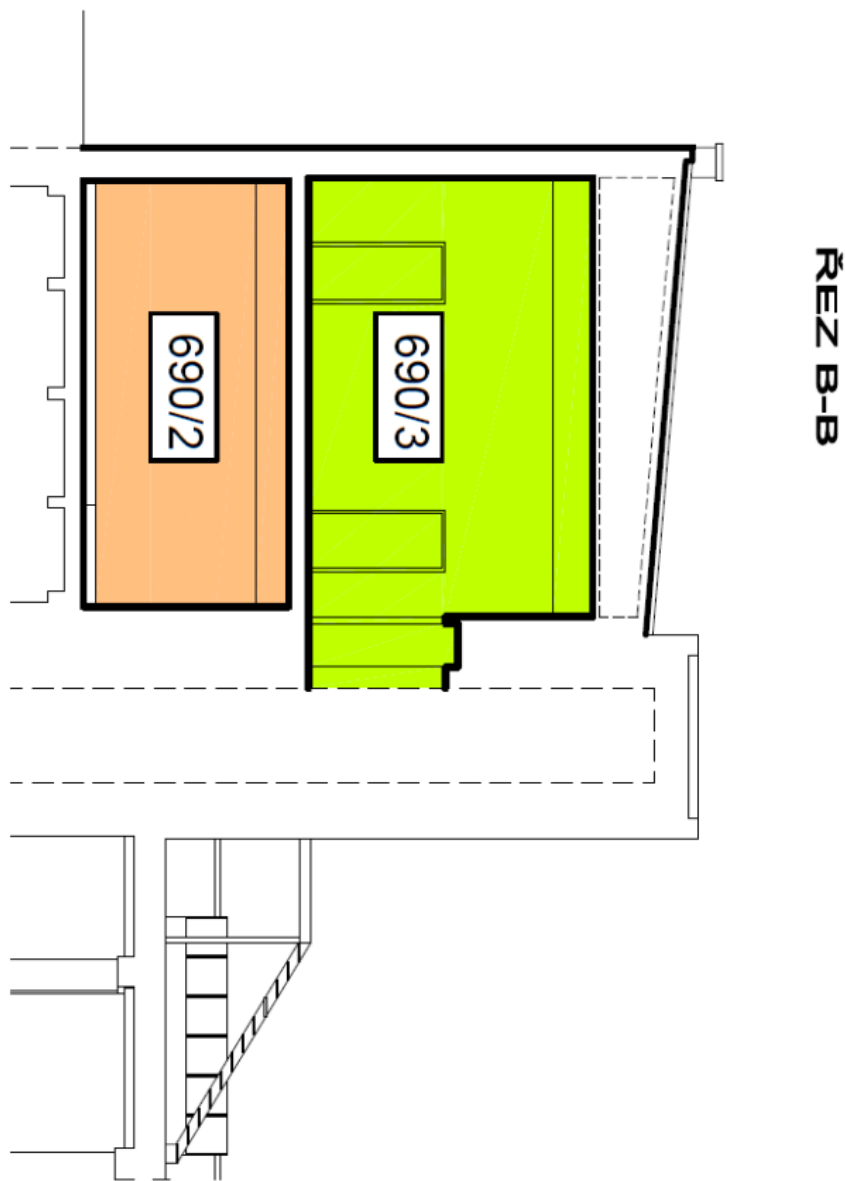
FASADA DVORNÍHO OBJEKTU



Office space

Prague 7, Holešovice, Milady Horákové

Sold

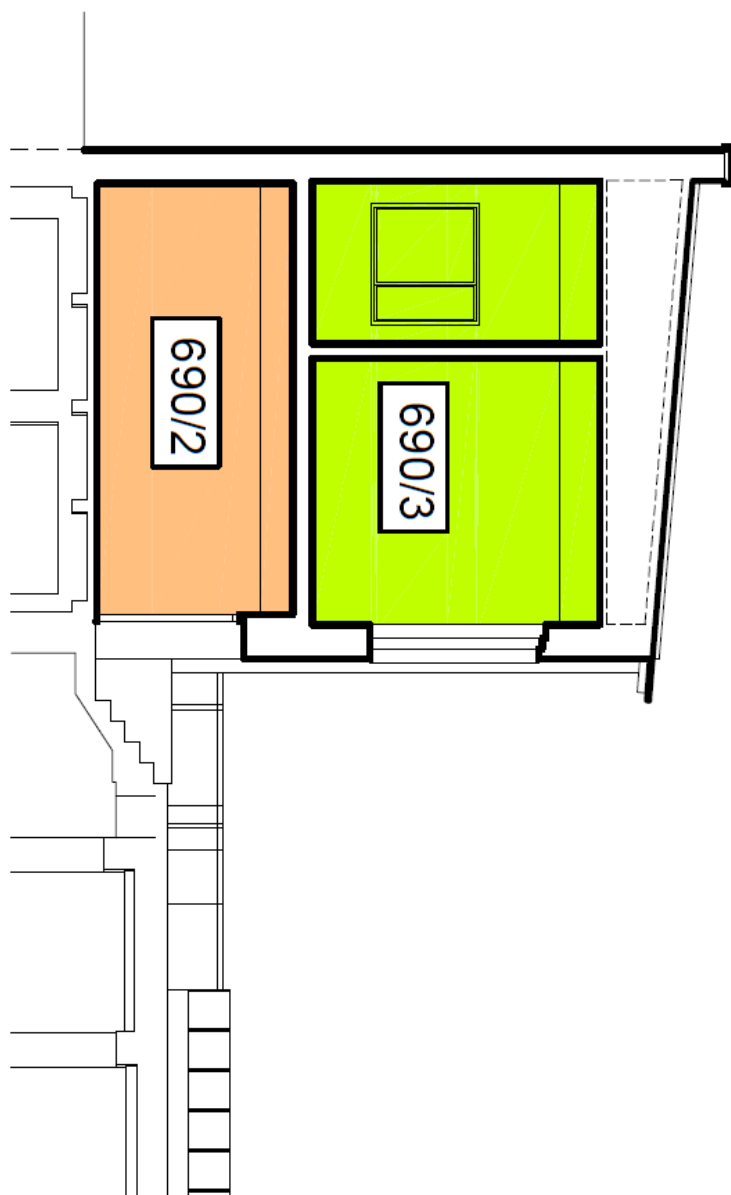




Office space

Prague 7, Holešovice, Milady Horákové

Sold



ŘEZ C-C